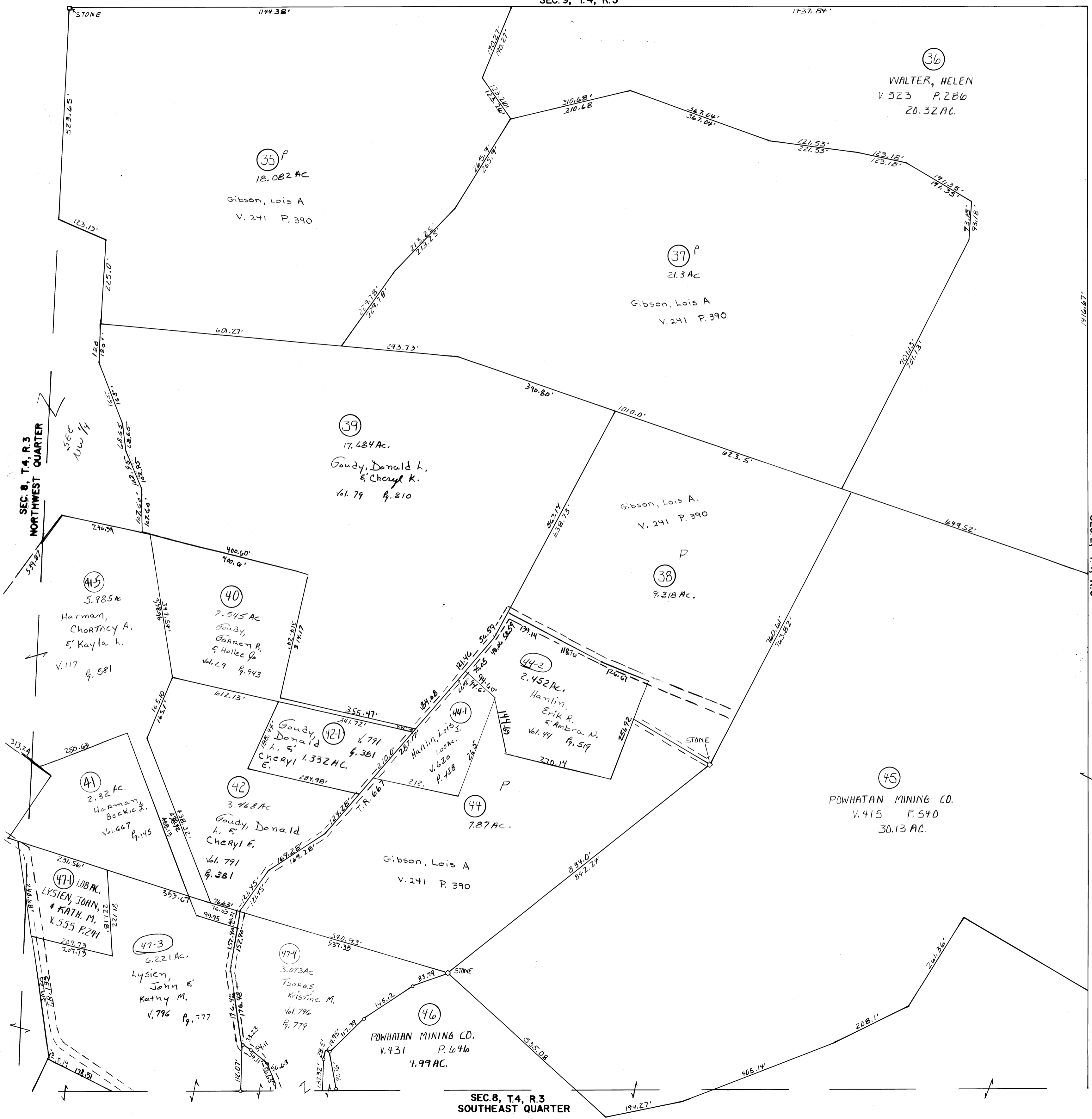


SEC. 9, T. 4, R. 3

**YORK**  
TOWNSHIP  
BELMONT COUNTY, OHIO 1984  
**Sec. 8, T. 4, R. 3**  
NORTHEAST QUARTER

SCALE IN FEET  
0 50 100 200 300  
FRED F. BENNETT, COUNTY ENGINEER  
REVISED 3-2011

NO.	NAME	VOL.	PG.	ACRES



Tract #38-5-1 Elim Comb w/ #44-2  
" #43 Elim Comb w/ #39  
" #47-3-5-1 Elim Comb w/ #41-5

SEC. 8, T. 4, R. 3  
SOUTHEAST QUARTER