

WHEELING

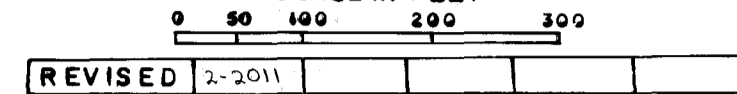
TOWNSHIP

BELMONT COUNTY, OHIO 1971

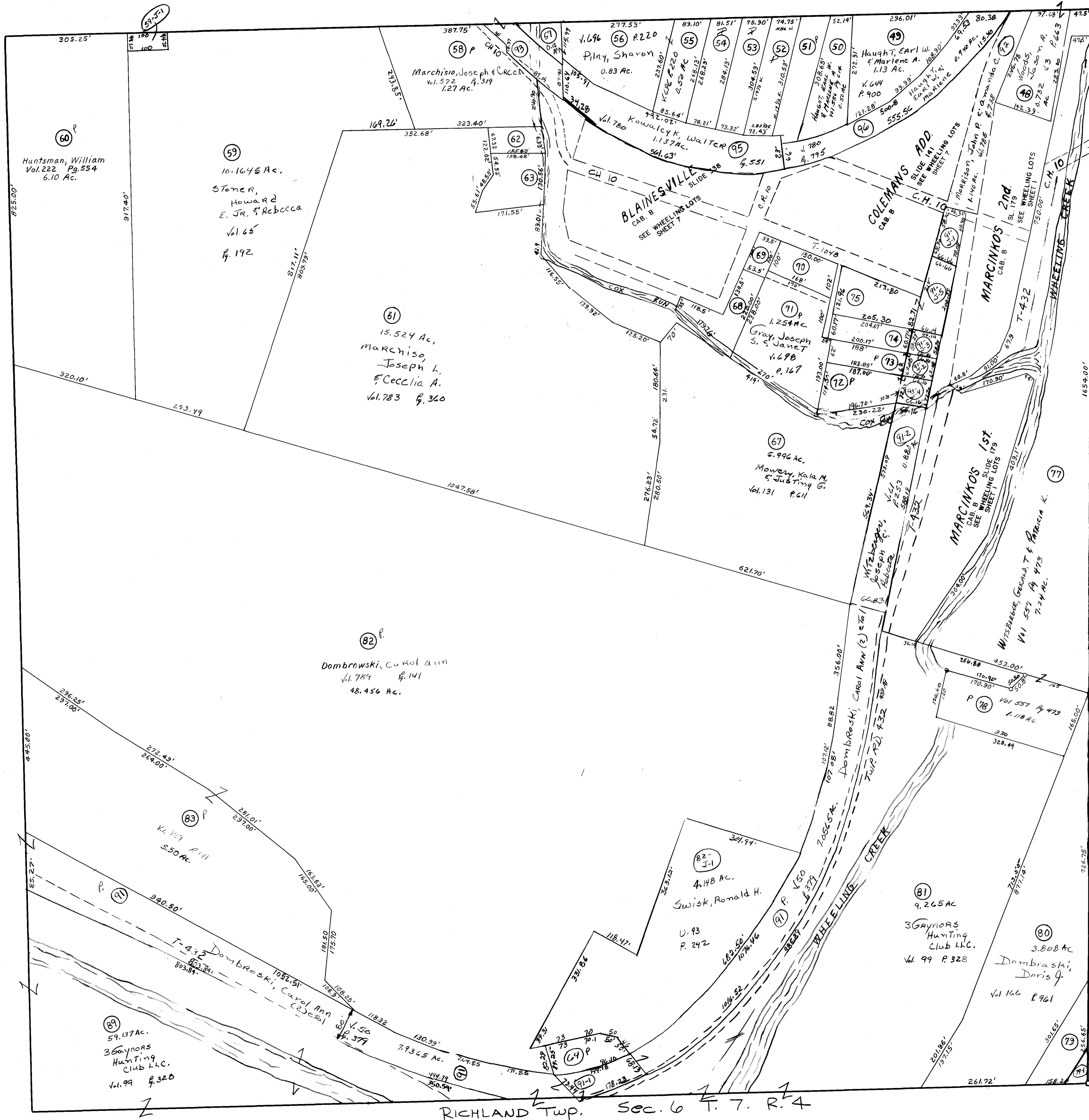
SOUTHEAST QUARTER

Sec. 1, T. 8, R. 4

FRED F BENNETT COUNTY ENGINEER
SCALE IN FEET



REVISED 2-2011



NO.	NAME	VOL.	PG.	ACRES
57	Piny, Sharon et al (C)	696	220	0.12
58	Hadzima, George Jr. & Nancy	724	378	0.50
59	Hadzima, George Jr.	"	"	0.50
60	Hadzima, George Jr.	724	378	0.50
61	Hadzima, George & Nancy	560	225	0.50
72	Gray, Jos. S. & Janet S.	540	767	0.45
73	Shriever, Richard A & Anna M	214	974	26.7
74	Shriever, Richard A & Anna M.	685	550	0.2776
70	Jablonski, Joann & Geo. J.	679	122	.365
65	Kathy, Km & Victoria Trustees	104	466	0.12
68	Do Do Do	104	466	.403
63	Androske, Shirley	598	84	0.459
62	Dundr, Elmer Jr. et al	29	436	.20
75	Cavano, Gray et al	78	534	0.492
79	Vicker, Leonard & Barbara	524	204	.242
74	Vicker, Karl S	766	422	.070
64	Swisk, Ronald H. (2) et al	93	242	.355
91-1	Swisk, Ronald H.	93	242	.2823
91-2	Daudy, Gilbert L. & Donna R.	739	388	1.827
91-3	Brubaker, Chas E.	739	401	0.0940
91-4	Shriever, Richard A. & Anna M.	739	403	0.0895
91-5	Gray, Jos. S. & Janet S.	739	408	1.101
91-6	Cavano, Gray et al	79	534	0.3139
91-7	Huntsman, Robert V.	52	19	0.1015
93	Lyons, Jeffrey & Mary	780	370	0.587

TRACTS #64, 65, 66 Elim Comb w/ #61
" #84, 85 Elim Comb w/ #89
TRACT #76 Elim Comb w/ #75

RICHLAND TWP. Sec. 6 T. 7. R. 4