

UNION

TOWNSHIP  
BELMONT COUNTY, OHIO 1970

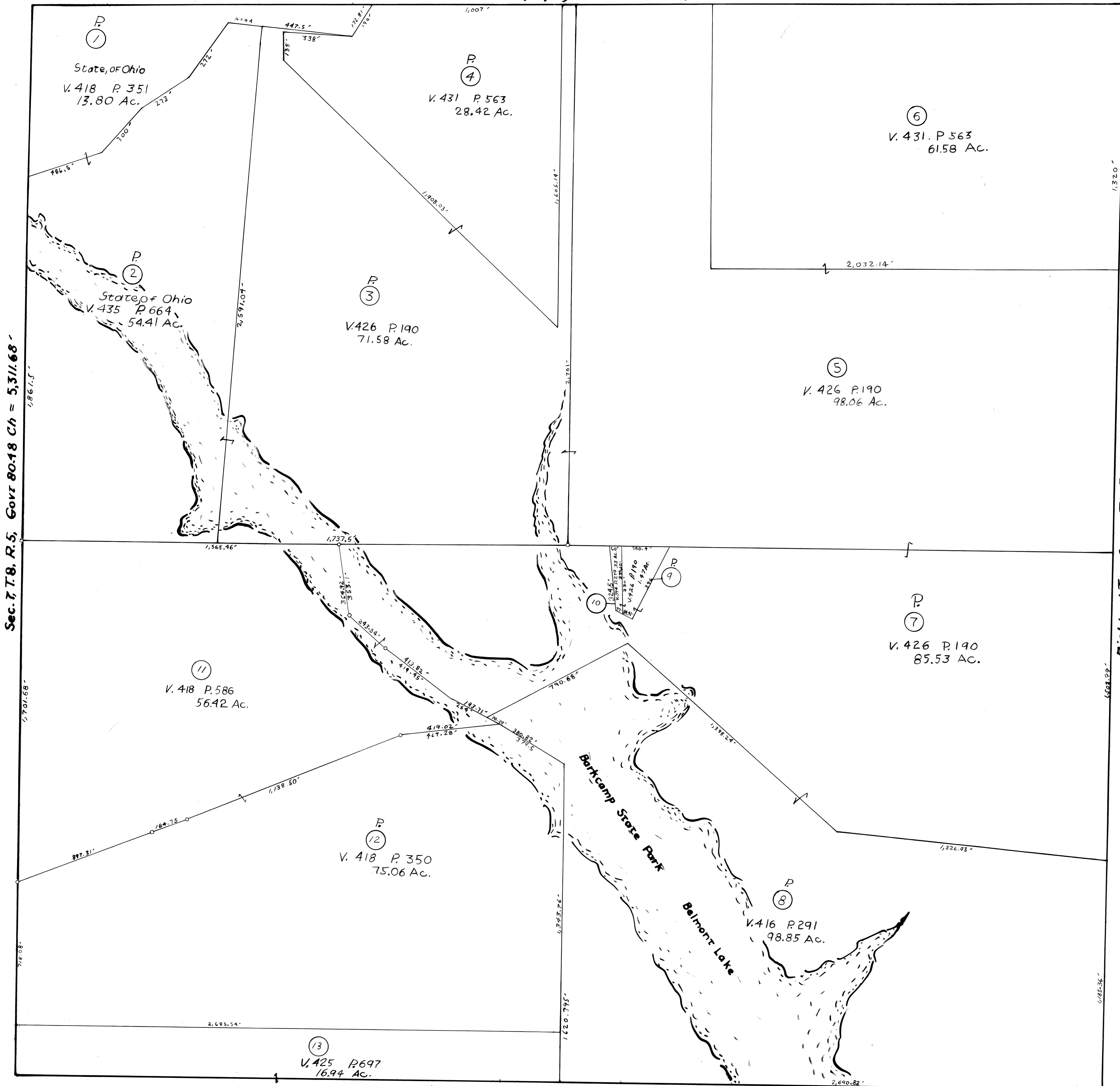
Sec. 1, T. 8, R. 5,

SCALE 1" = 200'

FRED F BENNETT COUNTY ENGINEER

REVISED 1-2010 6-2011

NO.	NAME	VOL.	PG.	ACRES



W.

Richland Twp. Sec. 7, T. 8, R. 5, Govt. 80 Ch. = 5,280'

S.

8380