

# SOMERSET

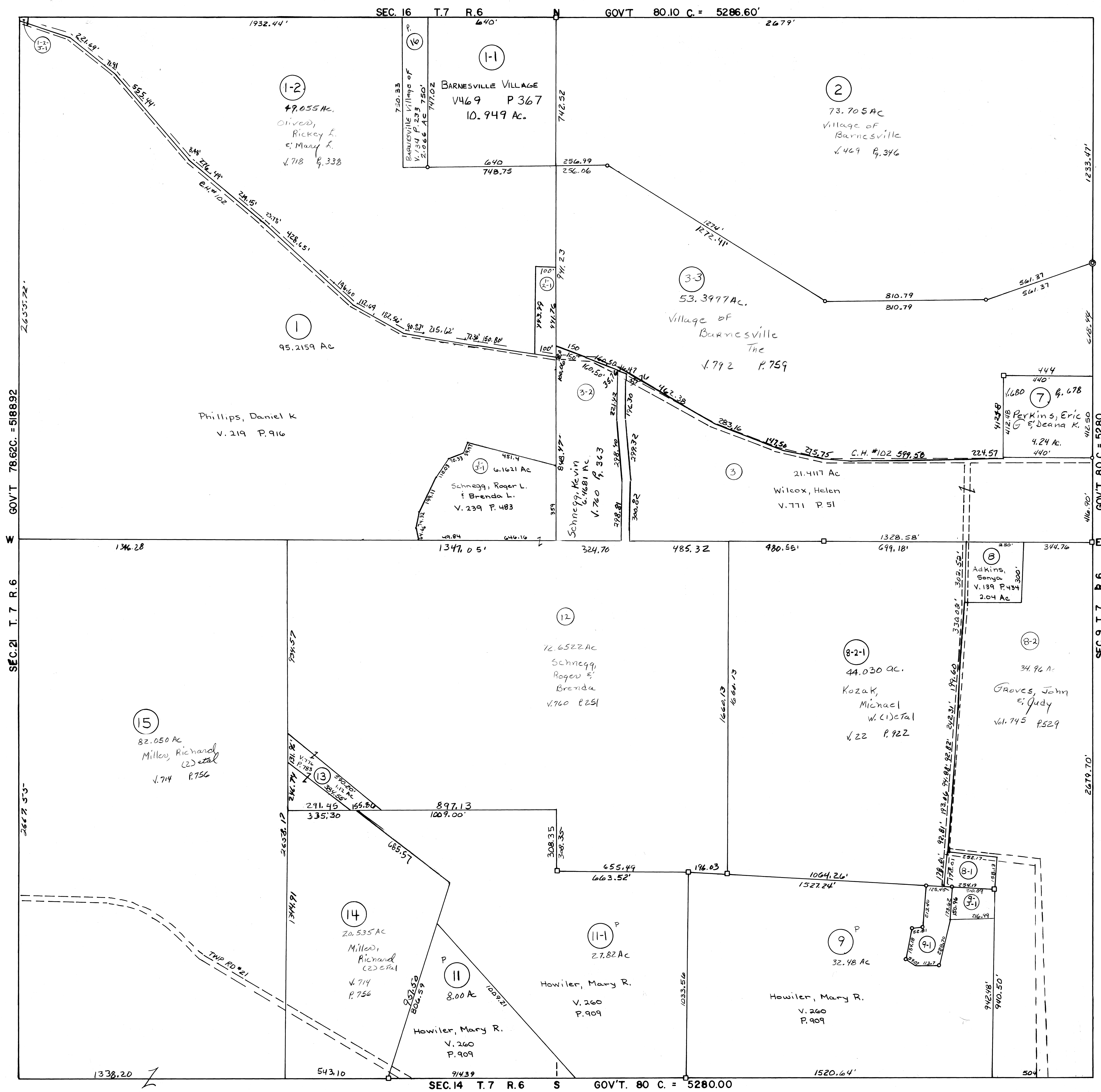
TOWNSHIP  
 BELMONT COUNTY, OHIO 1984  
**Sec. 15, T. 7, R. 6**

SCALE IN FEET  
 0 100 200 400 600

FRED F. BENNETT COUNTY ENGINEER

REVISED 10-2011

NO.	NAME	VOL.	PG.	ACRES
	Wilcox, Helen	771	51	0.017
8-1	Randall, Ray T.	682	313	1.00
9-1	Perkins, Carl E.	66	788	1.34
12-1	Olivens, Rickey E. II	772	581	1.008
9-1	Randall, Ray T.	50	274	0.680



OL 10, 3-1 elim. comb. w/ OL 12

GOV'T 78.62C. = 518892

SEC. 21 T. 7 R. 6

2667.53'

SEC. 14 T. 7 R. 6 S GOV'T. 80 C. = 5280.00

GOV'T 80 C. = 5280

SEC. 9, T. 7, R. 6

2679.70'