

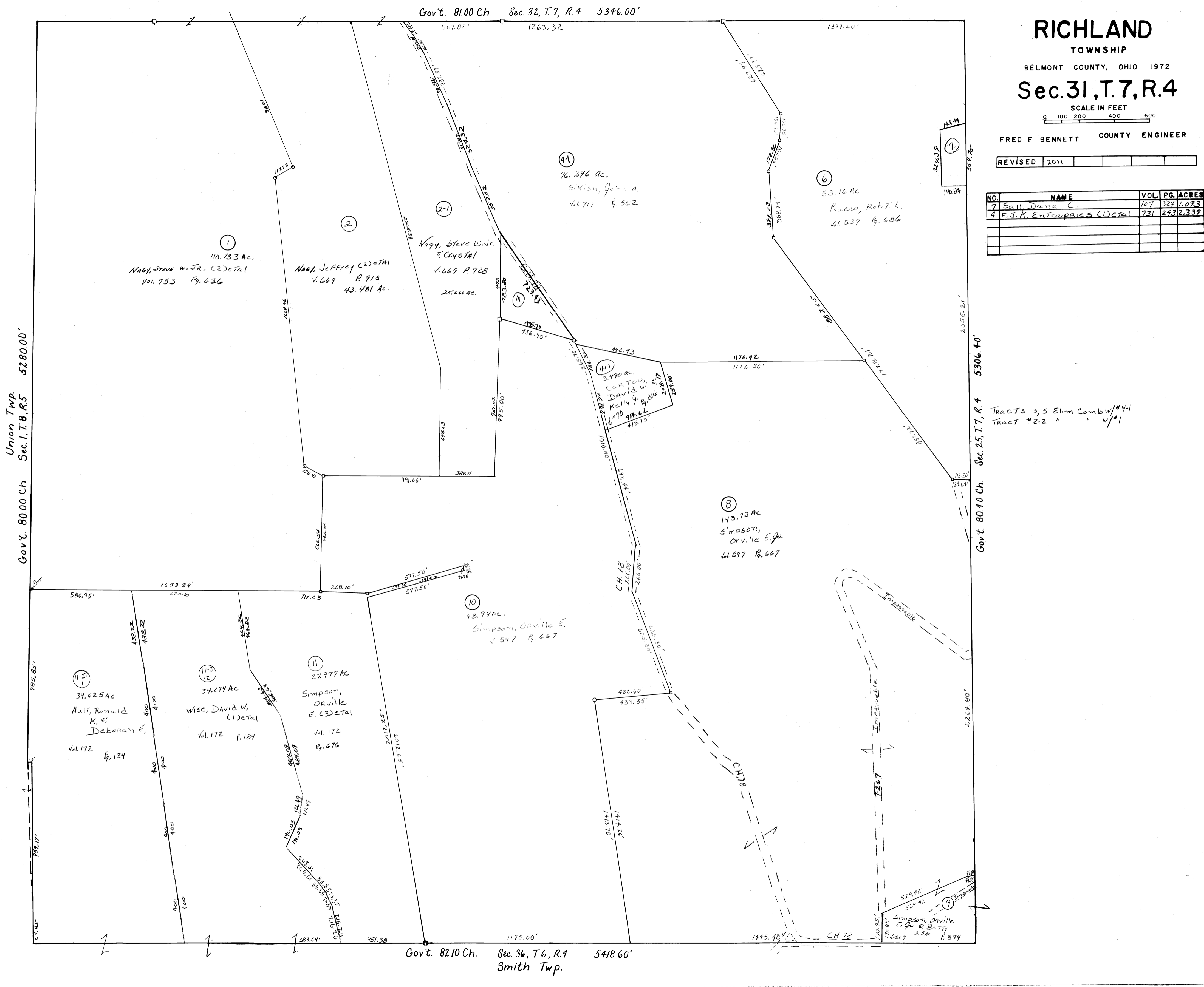
RICHLAND
TOWNSHIP
BELMONT COUNTY, OHIO 1972
Sec. 31, T. 7, R. 4

SCALE IN FEET
0 100 200 400 600

FRED F BENNETT COUNTY ENGINEER

REVISED 2011

NO.	NAME	VOL.	PG.	ACRES
7	Sall, Dana C.	107	324	1.073
4	F.J.K. Enterprises (1) et al	731	293	2.339



①
110.733 AC.
Nagy, Steve W. Jr. (2) et al
Vol. 753 Pg. 636

②
Nagy, Jeffrey (2) et al
Vol. 669 Pg. 915
43.481 AC.

②-1
Nagy, Steve W. Jr.
& Crystal
Vol. 669 Pg. 928
25.666 AC.

④
76.346 AC.
Sikish, John A.
Vol. 717 Pg. 562

⑥
53.16 AC.
Powens, Robt L.
Vol. 537 Pg. 686

④-1
3.490 AC.
CARTER,
DAVID W. &
KELLY J.
Vol. 770 Pg. 816
25.817
418.75

⑧
143.73 AC
SIMPSON,
Orville E. Jr.
Vol. 597 Pg. 667

⑩
98.94 AC.
SIMPSON, Orville E.
Vol. 597 Pg. 667

⑪
27.977 AC
SIMPSON,
Orville
E. (3) et al
Vol. 172
Pg. 676

⑪-2
34.294 AC
WISC, David W.
(1) et al
Vol. 172 Pg. 124

⑪-1
34.625 AC
AULT, Ronald
K. E.
Deborah E.
Vol. 172 Pg. 124

⑨
SIMPSON, Orville
E. & Betty
Vol. 607 Pg. 874
3.5 AC

TRACTS 3, 5 Elim Comb w/ #4-1
TRACT #2-2 " w/ #1

Union Twp.
Sec. 1, T. 8, R. 5 5280.00'

Gov't. 80.00 Ch. Sec. 1, T. 8, R. 5 5280.00'

Gov't. 81.00 Ch. Sec. 32, T. 7, R. 4 5346.00'

Gov't. 82.10 Ch. Sec. 36, T. 6, R. 4 5418.60'
Smith Twp.

Gov't. 80.40 Ch. Sec. 25, T. 7, R. 4 5306.40'