

RICHLAND

TOWNSHIP

BELMONT COUNTY, OHIO 1974

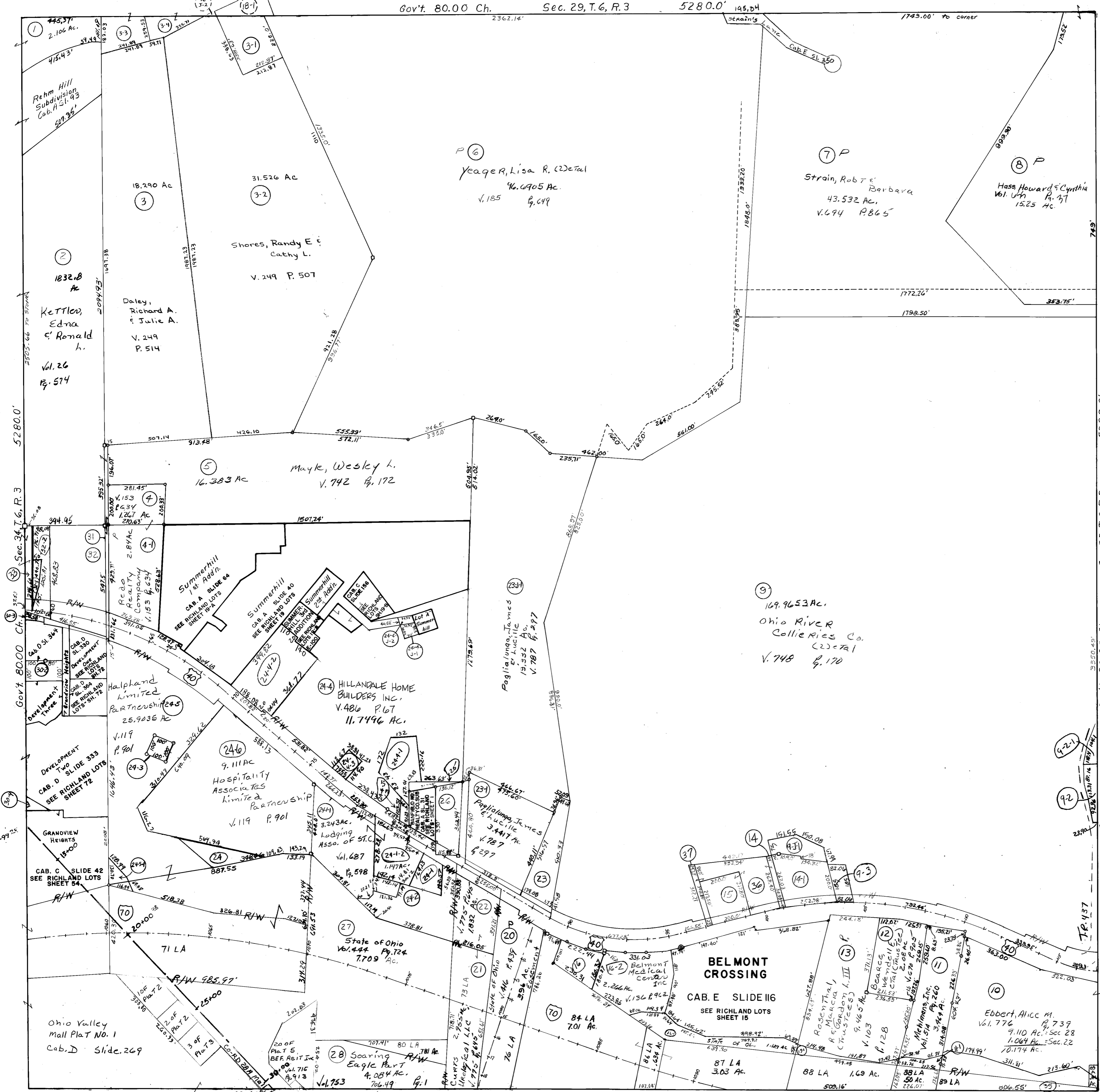
Sec. 28, T.6, R.3

SCALE IN FEET



FRED F BENNETT COUNTY ENGINEER

REVISED 2-2011



NO.	NAME	VOL.	PG.	ACRES
36	Amu, S'Ann Inc.	733	562	1.30
37	do	"	"	0.18
14	do	"	"	0.19
15	do	733	562	1.00
23	Premium Petroleum	94	720	1.387
243	Bel. Co. San. Sewer Dist No. 2	452	511	2.99
244	Bel. Co. Comm	513	611	0.66
51	Bel. Co. Commissioners	543	608	1.047
25	City Hospital The	732	60	0.15
26	"	732	60	0.99
32-2	St. Clairsville, City of	49	770	0.820
30-2	Fatula, George J. & Norma 10 et al	95	259	0.959
33	St. Clairsville City of	49	770	0.344
11-1	State of Ohio	578	734	2.36
13-1	do do do	580	2	2.55
24-2	T.E. Limited	733	556	1.906
28	State of Ohio Slope Easement	581	563	0.38
24-5-1	do do do	590	191	0.20
10-1	do do do	"	"	1.023
30-3	State of Ohio	"	"	0.12
30-4	do do do	589	687	.11
31	Kettler, Edna & Ronald L.	26	574	0.326
244-2	Doranne Properties LTD	739	572	2.228
3-1	Shores Randy E. & Cathy L.	618	378	1.325
32-1	St. Clairsville, City of	49	770	0.303
4-1	Macri, Mark A. & Terry J.	658	301	0.339
9-3-1	Rock-Hol Inc.	657	13	0.5487
14-1	do do do	654	720	1.40
24-4-3	Grand M. Holding Company	776	639	0.230
12	Bearce, Wendell E. et al (Trustee)	670	905	2.08
16	BERT, LLC.	770	490	.719
4-1	Four Season Garden Center	1174	667	1.00
24-1	do do do do	674	667	0.99
24-4	T.J.E. Limited Partnership	773	362	0.467
32	Fillipovich, Jas F. & Nancy M.	733	393	3.049
24	Half Land Limited Partnership	119	901	0.5317
28	Soaring Eagle Part	753	1	4.084
1	Kettler, Edna & Ronald L.	26	574	2.103
6-3-1	Strain, Robert S. & Barbara A.	768	900	2.075
35	Ebbert, Alice et al (6)	776	739	.962
9-2	Denson, Kelly A.	122	381	0.346
9-2-1	Jamison, Dennis M. & Debra S.	150	96	0.201
3-3	Daley, Daniel L.	249	510	0.812
3-4	"	249	512	0.473

Elim No. 29, 34 Ohio Valley Mall
 " " 14 Comb W/ #2-3
 " " 18 " W/ #16
 " " 19 " W/ #16
 Tracts #24-5-1, #24-5-1-1, #24-7 Elim Comb W/ #24-6
 Elim No #30-1, 30
 do #6-3-1

NO.	NAME	VOL.	PG.	ACRES
10	Ebbert, Alice M.	776	739	0.962
11	"	110	901	0.5317
12	"	670	905	2.08
13	"	770	490	.719
14	"	1174	667	1.00
15	"	674	667	0.99
16	"	773	362	0.467
17	"	733	393	3.049
18	"	119	901	0.5317
19	"	753	1	4.084
20	"	26	574	2.103
21	"	768	900	2.075
22	"	122	381	0.346
23	"	150	96	0.201
24	"	249	510	0.812
25	"	249	512	0.473