

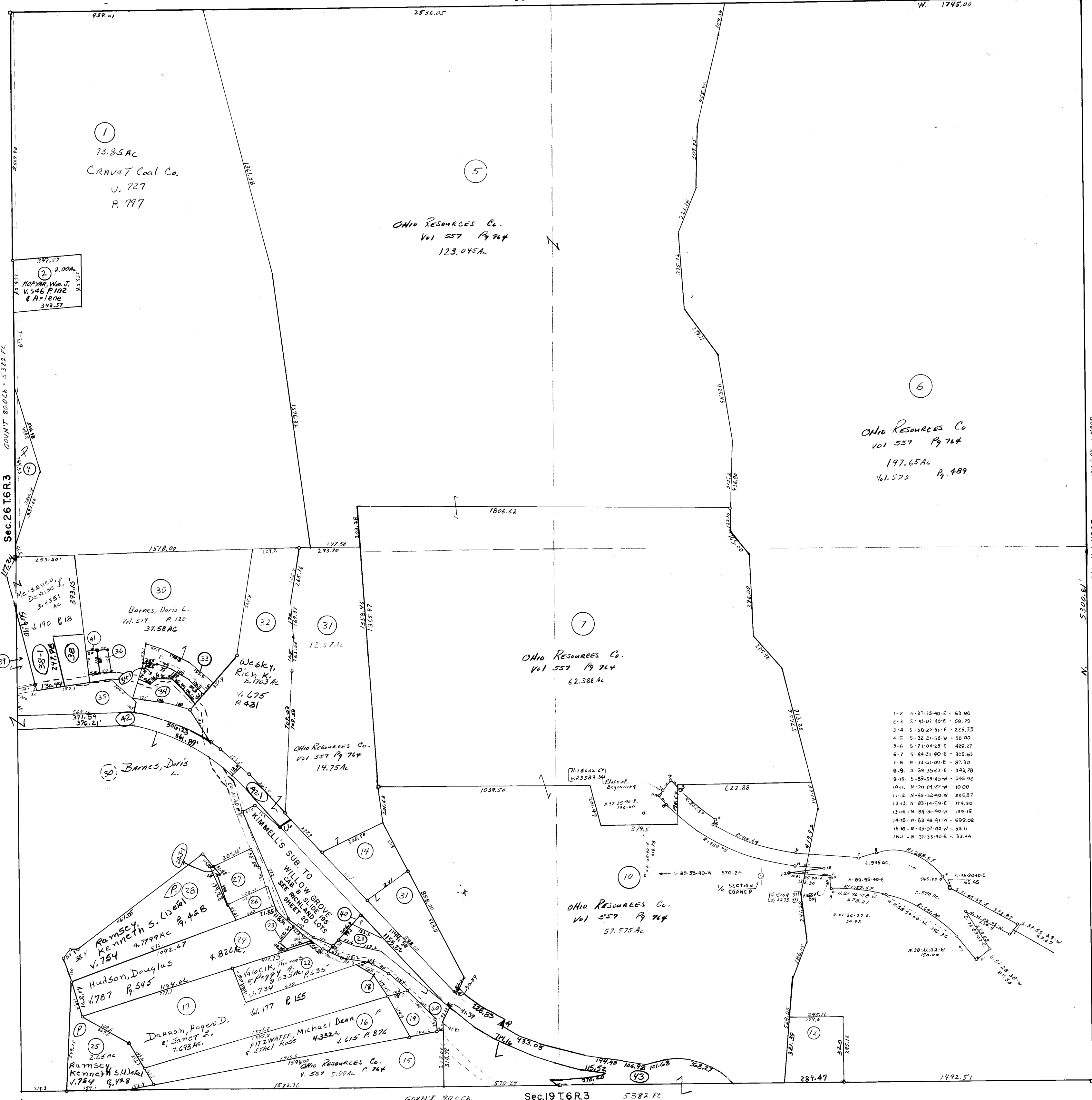
RICHLAND
TOWNSHIP
BELMONT COUNTY, OHIO 1972
Sec.20,T.6,R.3

SCALE IN FEET
0 100 200 400 600

FRED F BENNETT COUNTY ENGINEER

REVISED 2-2011

NO.	NAME	VOL.	PG.	ACRES
4	Snodgrass, Chas A.	717	180	1.08
14	Longh, Charles	774	180	1.92
18	do do	774	180	0.307
19	Underwood, Perry E. & Eleanor	640	723	.668
20	Ohio Resources Co.	557	764	1.12
21	do do	557	764	1.118
23	Tecman, Douglas E.	12	655	0.171
26	McCUTCHEON, JES E. SARAH	752	47	.426
27	Protiva, Edw S. & Rosalee	777	459	0.93
33	Valocik, Charles T.	603	581	.644
34	Sabinsky, Wendy J.	73	27	0.622
36	Thompson, Fred	750	155	0.126
39	Alloia, Joseph M. & Mary Catherine	582	491	0.302
40	Dutcher, Roy J. II	790	762	0.265
35	McTILTON, Rosemary D.	579	461	1.71
41	Thompson, Fred	750	155	0.126
12	Balenick, Steve C.	749	8	2.017
28	J-1 Protiva, Edw S. & Rosalee	777	459	0.0471
42	Belmont County Sanitary	757	613	1.341
	→ Sewer Dist #3			
43	Belmont County Sanitary	757	613	4.906
	→ Sewer Dist #3			
38	Valocik, Thomas E.	56	458	0.7549
39	Valocik, C. Thomas & Peggy Ann	30	280	0.456



- 1-2 N-37-55-40-E - 63.80
- 2-3 S-43-07-40-E - 68.79
- 3-4 S-50-22-51-E - 225.33
- 4-5 S-32-21-58-W - 30.00
- 5-6 S-71-04-28-E - 489.27
- 6-7 S-84-31-40-E - 305.05
- 7-8 N-73-51-00-E - 87.30
- 8-9 S-69-35-23-E - 343.78
- 9-10 S-89-55-40-W - 545.92
- 10-11 N-00-04-22-W - 10.00
- 11-12 N-88-32-40-W - 205.87
- 12-13 N-83-14-59-E - 174.30
- 13-14 N-84-31-40-W - 139.15
- 14-15 N-63-49-41-W - 699.02
- 15-16 N-43-07-40-W - 53.11
- 16-4 N-37-35-40-E - 33.44

Tracts # 44, 45, 46, 47, 48 Eliminated Comb w/ #43
 TRACT #3 " " w/ #1
 " # 29 " " w/ # 27
 " # 8 " " w/ # 7
 " # 9 " " w/ # 7
 " # 11 " " w/ # 10
 " # 13 " " w/ # 31
 " # 37 " " "

Sec.26 T.6R.3 GOVNT 800 Ch. 5382.Pc.

Sec.14 T.6R.3 PUTNEY TWP. 5382.Pc.