

RICHLAND

TOWNSHIP

BELMONT COUNTY, OHIO 1974

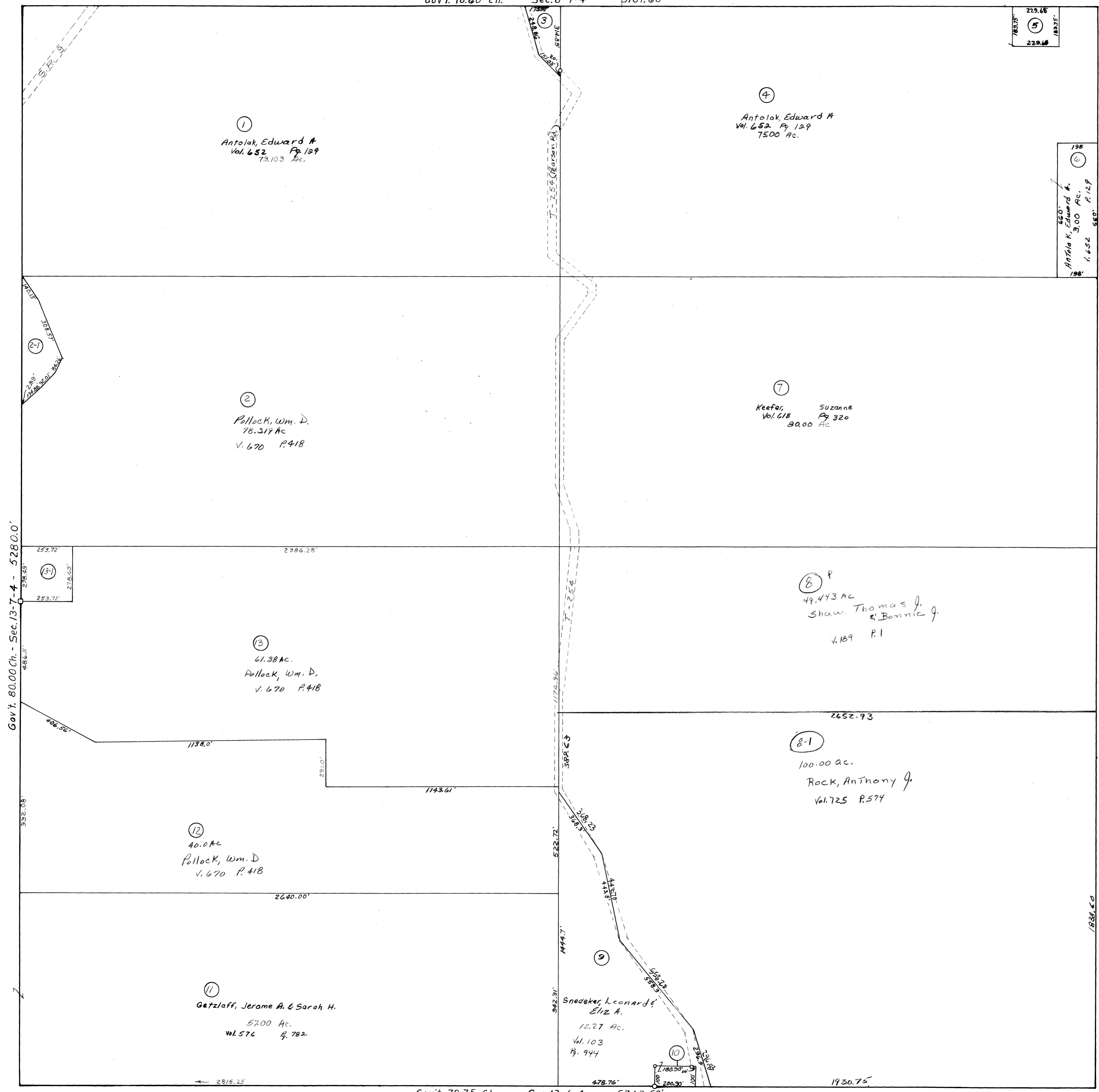
Sec. 7, T. 7, R. 4

SCALE IN FEET
0 100 200 400 600

FRED F BENNETT COUNTY ENGINEER

REVISED 2011

NO.	NAME	VOL.	PG.	ACRES
2-1	Jarvis, Louise G.	206	60	1.601
3	Antolak, Edward A.	652	129	.891
5	Antolak, Alex	667	338	1.00
10	Snedeker, Leonard	750	515	.46
13-1	Schimmel, Ronald J. II & Diana	743	904	1.62



Gov't. 80.00 Ch. - Sec. 13-7-4 - 5280.0'

Gov't. 80.19 Ch. Sec. 1-7-4 5292.54'