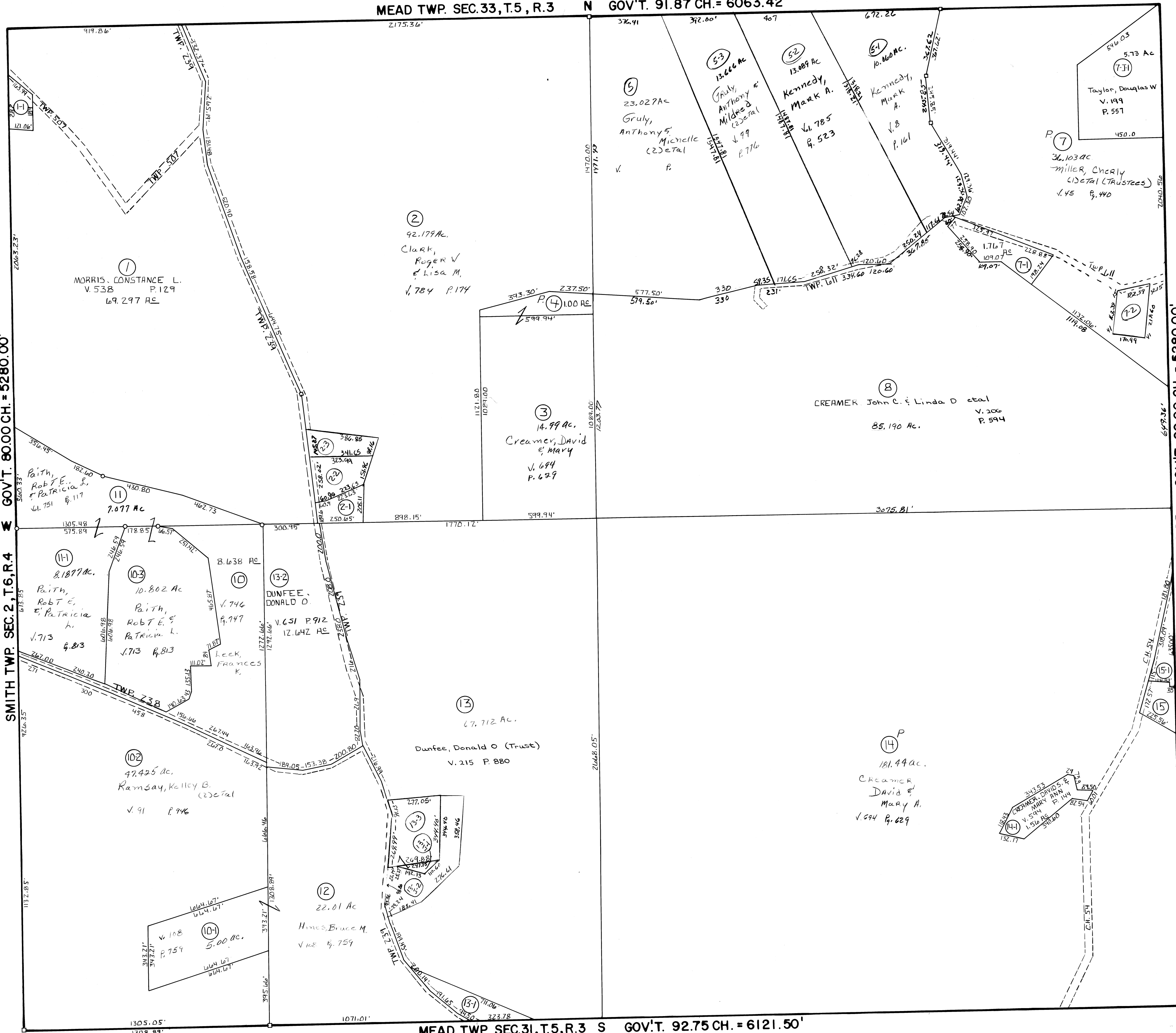


SMITH TWP. SEC.2, T.6, R.4 GOV'T. 80.00 CH. = 5280.00'

MEAD TWP. SEC.26, T.5, R.3 GOV'T. 80.00 CH. = 5280.00'



NO.	NAME	VOL.	PG.	ACRES
13-1	BELMONT ELEC COOP INC.	459	530	1.28
15	RAMSAY, JAMES S. (TRUSTEE)	171	522	.869
15-1	RAMSAY, JAMES S. (TRUSTEE)	171	522	.955
7-1	MILLER, JAMES A & CHERYL L.	580	608	1.767
2-1	LeFKay, Frank	656	464	.8910
7-2	Belmont United Pres Church	668	853	1.00
13-3	Ramsay, Bryan G & Renee L.	723	573	2.1128
2-2	Kidder, Lucinda B.	776	474	1.375
13-1	Ramsay, Bryan G & Renee L.	778	389	0.162
2-3	Kidder, Lucinda B.	794	652	1.00
1-1	Hess, Thomas E & Hammond, Karen A.	680	363	.703
13-2	Ramsay, Bryan G & Renee L.	57	435	2.076

TRACT #9 Elim Comb w/ #8
" #6 " " w/ #5