

MEAD
TOWNSHIP
BELMONT COUNTY, OHIO 1986
Sec. 30, T.4, R.3

SCALE IN FEET
0 100 200 400 600

FRED F. BENNETT, COUNTY ENGINEER

REVISED 1-2011

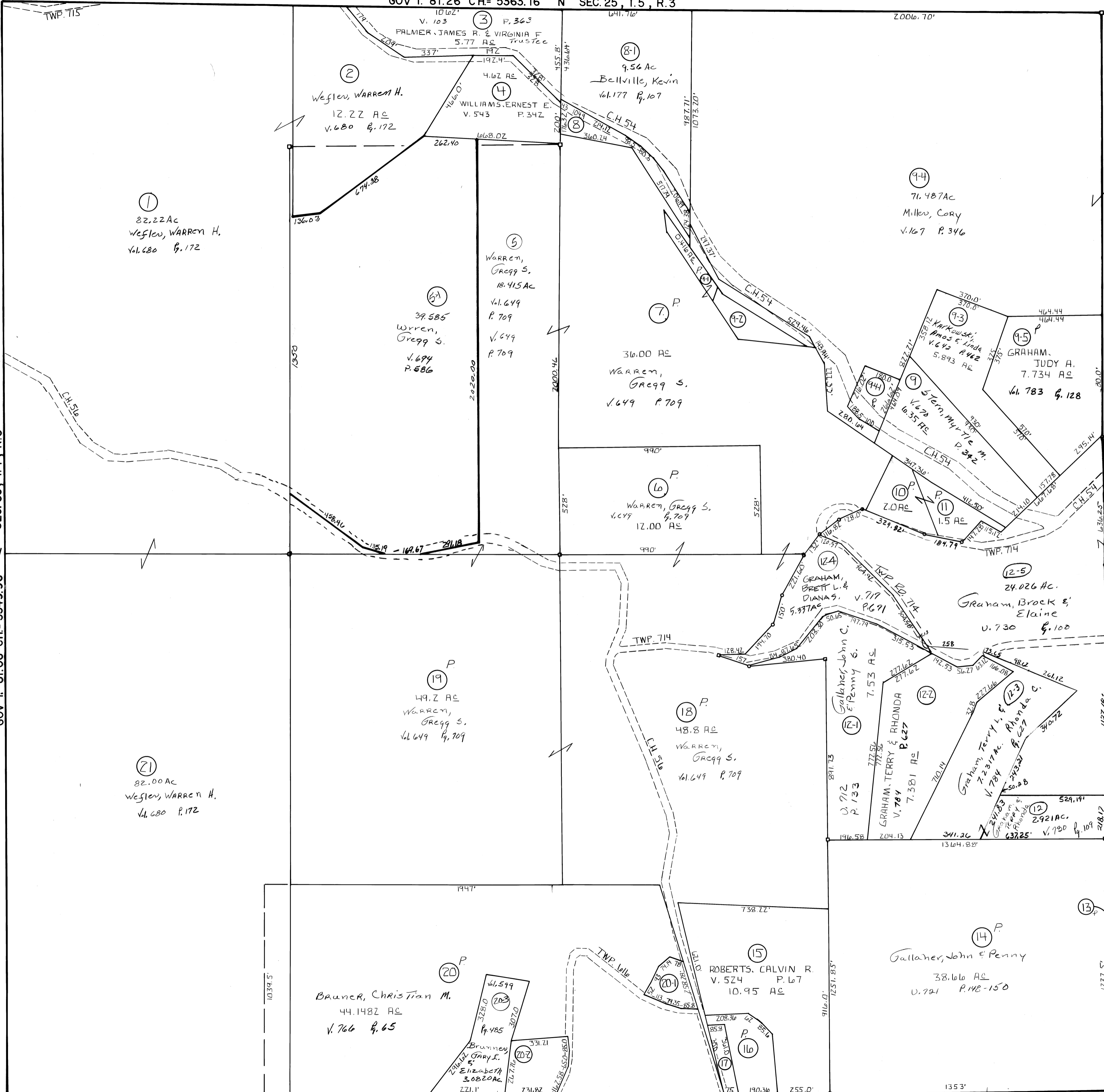
NO.	NAME	VOL.	PG.	ACRES
10	Warren, Frank H. & Daniel H.	599	167	2.00
11	do do do	599	167	1.50
9-2	OTTO, Benjamin & Donna J.	598	402	1.034
13	ROBERTS, Wm. & Wanda	724	442	0.06
17	ROBERTS, Calvin	524	720	0.645
8	MASSIE, Carol C.	761	89	1.61
10	Collins, Brian J. & Pamela J.	764	134	1.84
20-1	Brunner, Floyd S. & Karen S.	525	737	0.9288
20-2	West, John B. & Kathy G.	594	680	1.84
20-3	Brunner, Gary L. & Elizabeth	599	485	3.0820
9-1	Warren, Gregg S. et al (2)	612	915	.416
9-4-1	Haggerty, George E. Sr. &	53	582	

NOTE: SEE COMMON PLEAS COURT CASE #19159 REGARDING TRACT #9 & TRACT #9-1

NO. 15-1 ELIMINATED COMBINED WITH NO. 16

GOV'T. 81.06 CH= 5349.96' W SEC. 36, T.4, R.3

GOV'T. 80.10 CH= 5286.60' E SEC. 24, T.4, R.3



①
82.22 Ac
Wegler, WARREN H.
V. 680 P. 172

②
Wegler, WARREN H.
12.22 Ac
V. 680 P. 172

③
Warren, Gregg S.
18.415 Ac
V. 649 P. 709

④
Bellville, Kevin
9.56 Ac
V. 177 P. 107

⑤
Warren, Gregg S.
18.415 Ac
V. 649 P. 709

⑥
Warren, Gregg S.
12.00 Ac
V. 649 P. 709

⑦
Warren, Gregg S.
39.585 Ac
V. 649 P. 586

⑧
Warren, Gregg S.
49.2 Ac
V. 649 P. 709

⑨
82.00 Ac
Wegler, WARREN H.
V. 680 P. 172

⑩
Warren, Gregg S.
48.8 Ac
V. 649 P. 709

⑪
Brunner, Christian M.
44.1482 Ac
V. 766 P. 65

⑫
ROBERTS, CALVIN R.
10.95 Ac
V. 524 P. 67

⑬
Gallagher, John & Penny
38.66 Ac
V. 721 P. 148-150

⑭
71.487 Ac
Miller, Cory
V. 167 P. 346

⑮
GRAHAM, JUDY A.
7.734 Ac
V. 783 P. 128

⑯
Graham, Brock & Elaine
24.026 Ac
V. 730 P. 100

⑰
Graham, Terry & Rhonda
7.381 Ac
V. 784 P. 627

⑱
2.921 Ac
V. 720 P. 109

⑲
Gallagher, John & Penny
38.66 Ac
V. 721 P. 148-150

⑳
Brunner, Gary L. & Elizabeth
3.0820 Ac
V. 599 P. 485

㉑
Warren, Gregg S. et al (2)
0.416 Ac
V. 612 P. 915