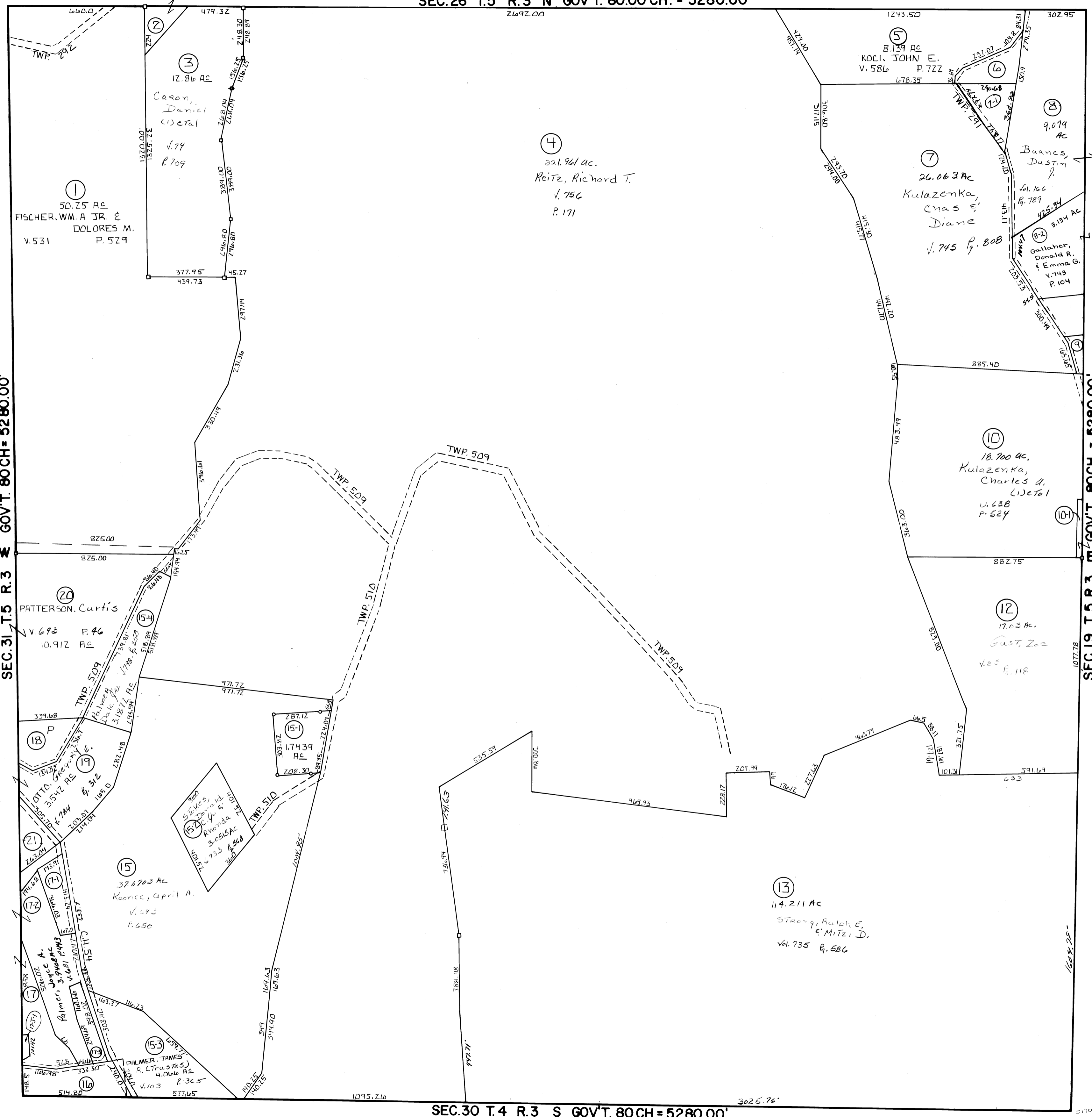


MEAD  
TOWNSHIP  
BELMONT COUNTY, OHIO 1986  
Sec.25, T.5, R.3

SCALE IN FEET  
0 100 200 400 600

FRED F. BENNETT, COUNTY ENGINEER

REVISED 1-2011



NO.	NAME	VOL.	PG.	ACRES
2	Caron, Daniel G. (et al)	74	707	0.68
6	Coen, Jesse	791	493	.969
9	DAY, DARBY & PHYLLIS	427	553	0.174
10-1	Prickett, Jason & Ambie	804	575/11	0.165
16	STEWART, JAMES & BARBARA	605	748	1.79
18	PATTERSON, CURTIS	693	46	2.00
8-1	GALLAHER, DON & EMMA G.	680	456	.605
17-1	PALMER, JOYCE A.	681	443	0.90
21	BELLVILLE, ROBERT L. & NANCY A.	524	516	0.894
15-1	KOONCE, TERRY L. & APRIL A.	571	698	1.7439
17-3	SCHRAMM, LOUIS M. & MARY L.	618	443	0.7502
17-1	SHIRLEY, JERRY & VICKIE Jo	703	65	.056
17	Palmer, Joyce A.	681	443	2.341
71	Coen, Susie Jo	21	548	1.145

NO.5 ELIMINATED 11 & 14 Comb w/ #4

SEC.31 T.5 R.3 GOV'T. 80CH = 5280.00'

SEC.19 T.5 R.3 GOV'T. 80CH = 5280.00'