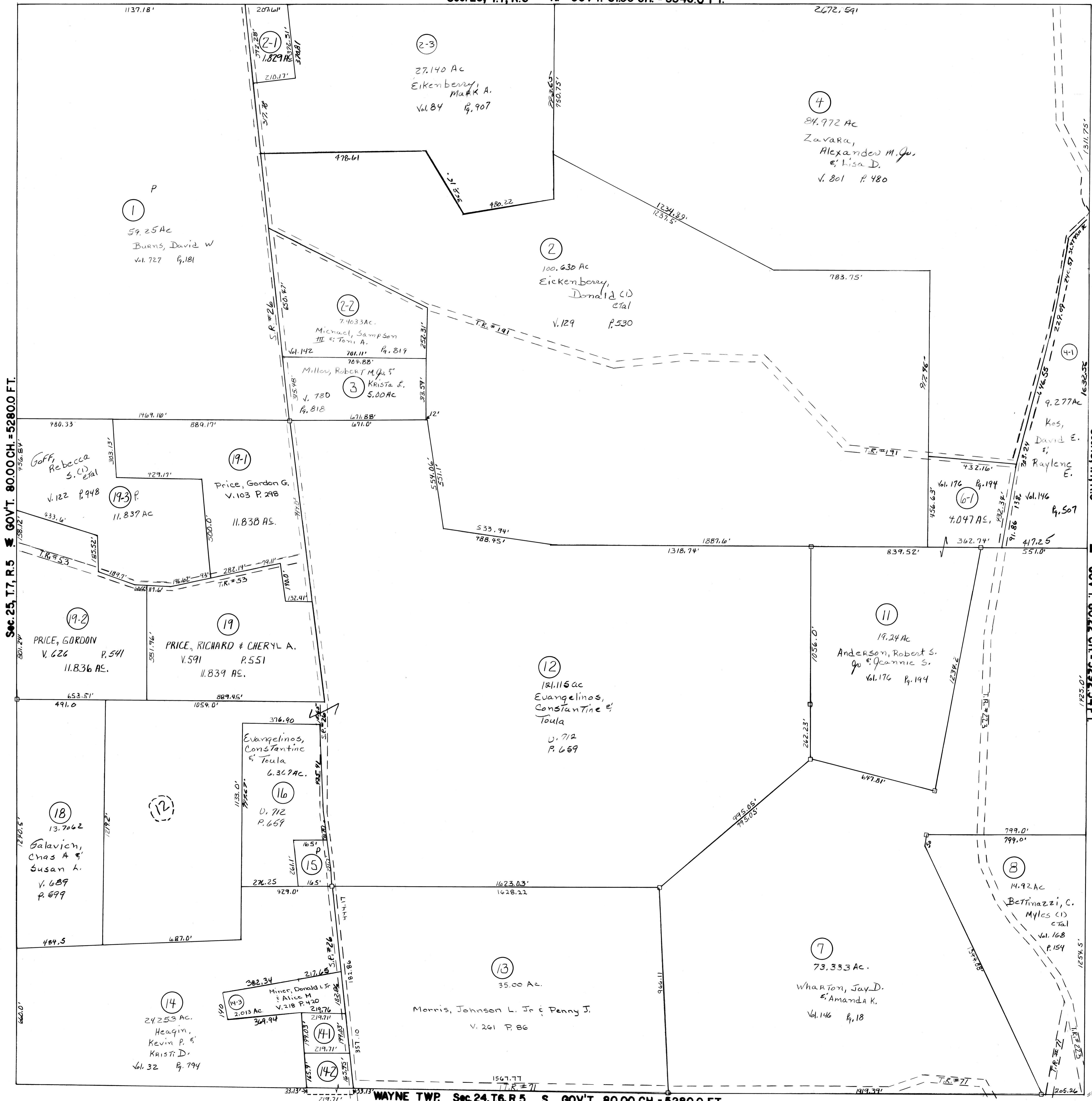


**GOSHEN**  
 TOWNSHIP  
 BELMONT COUNTY, OHIO 1985  
**Sec. 19, T.7, R.5**  
 SCALE IN FEET  
 0 100 200 400 600  
**FRED F. BENNETT, COUNTY ENGINEER**

REVISED 10-2014

NO.	NAME	VOL.	PG.	AC.
2-1	EIKENBERRY, DONALD	529	326	1.829
14-1	Day, James M. & Cathy	624	391	1.00
14-2	Veitcel, Ida L.	102	601	0.854
15	Saffell, Stacy C.	102	815	1.00

D.L. No. 17 ELIMINATED. COMBINED WITH D.L. No. 12  
 D.L. Nos. 9 & 10 ELIMINATED. COMBINED WITH D.L. No. 7  
 S, G Elim Comb w/ #4



Sec. 25, T.7, R.5 N. GOV'T. 80.00 CH. = 5280.0 FT.

Sec. 13, T.7, R.5 N. GOV'T. 80.22 CH. = 5292.54 FT.