

**GOSHEN**  
TOWNSHIP  
BELMONT COUNTY, OHIO 1985  
**Sec. 16, T. 7, R. 5**  
SCALE IN FEET

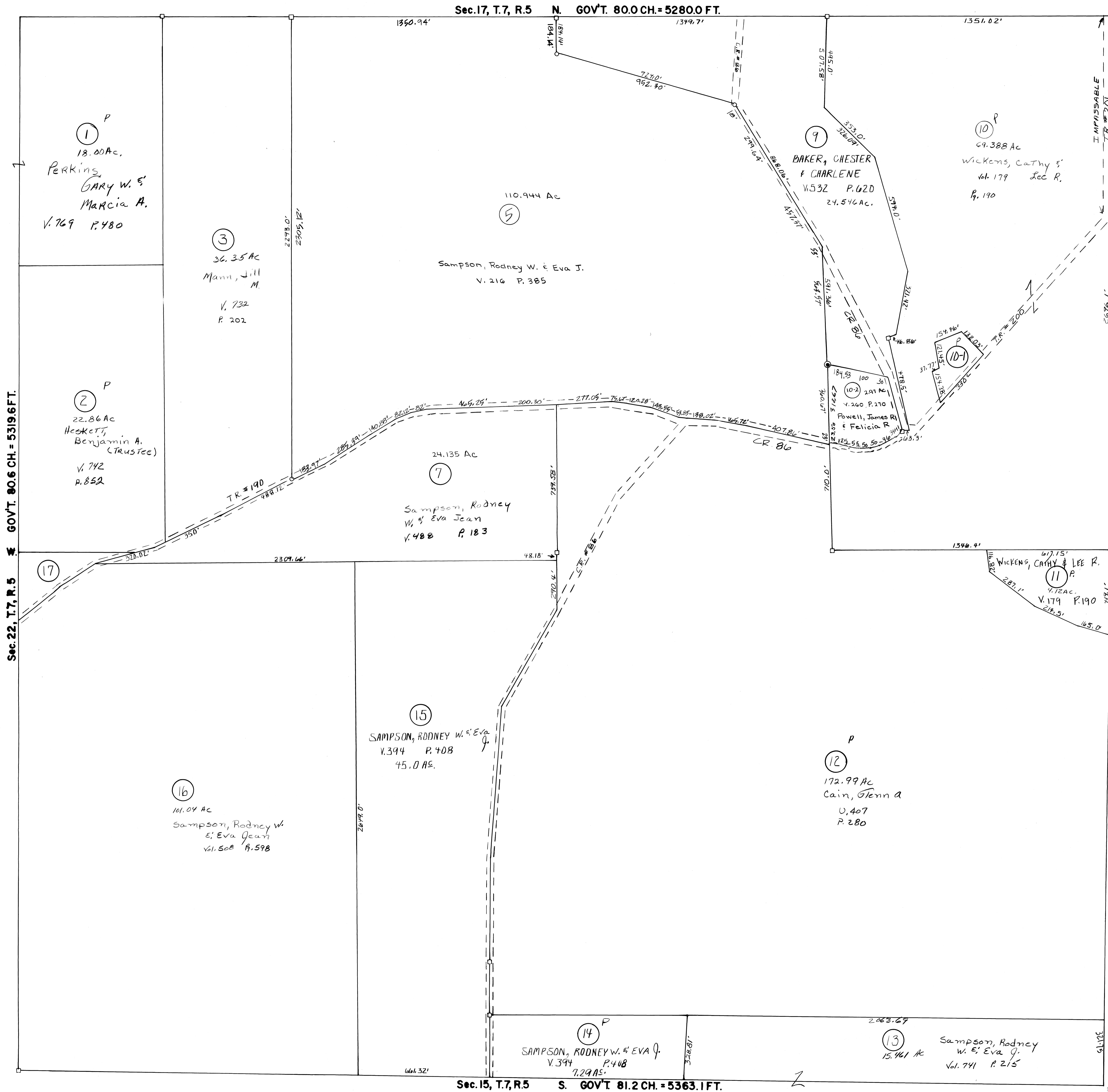
0 100 200 400 600

FRED F. BENNETT, COUNTY ENGINEER

REVISED 10-2011

NO.	NAME	VOL.	PG.	AC.
10-1	EMORY, CLARA C.	570	414	1.00
17	Davis, Thomas M. & Kathy D.	723	343	1.111

02 # 4 Elim & comb. w/ # 7  
Tract # 6 & 8 Elim Comb w/ # 5



Sec. 15, T. 7, R. 5 S. GOVT. 81.2 CH. = 5363.1 FT.

Sec. 22, T. 7, R. 5 GOVT. 80.6 CH. = 5319.6 FT.

Sec. 17, T. 7, R. 5 N. GOVT. 80.0 CH. = 5280.0 FT.

Sec. 10, T. 7, R. 5 E. GOVT. 80.0 CH. = 5280.0 FT.