

FLUSHING

TOWNSHIP

BELMONT COUNTY, OHIO 1970

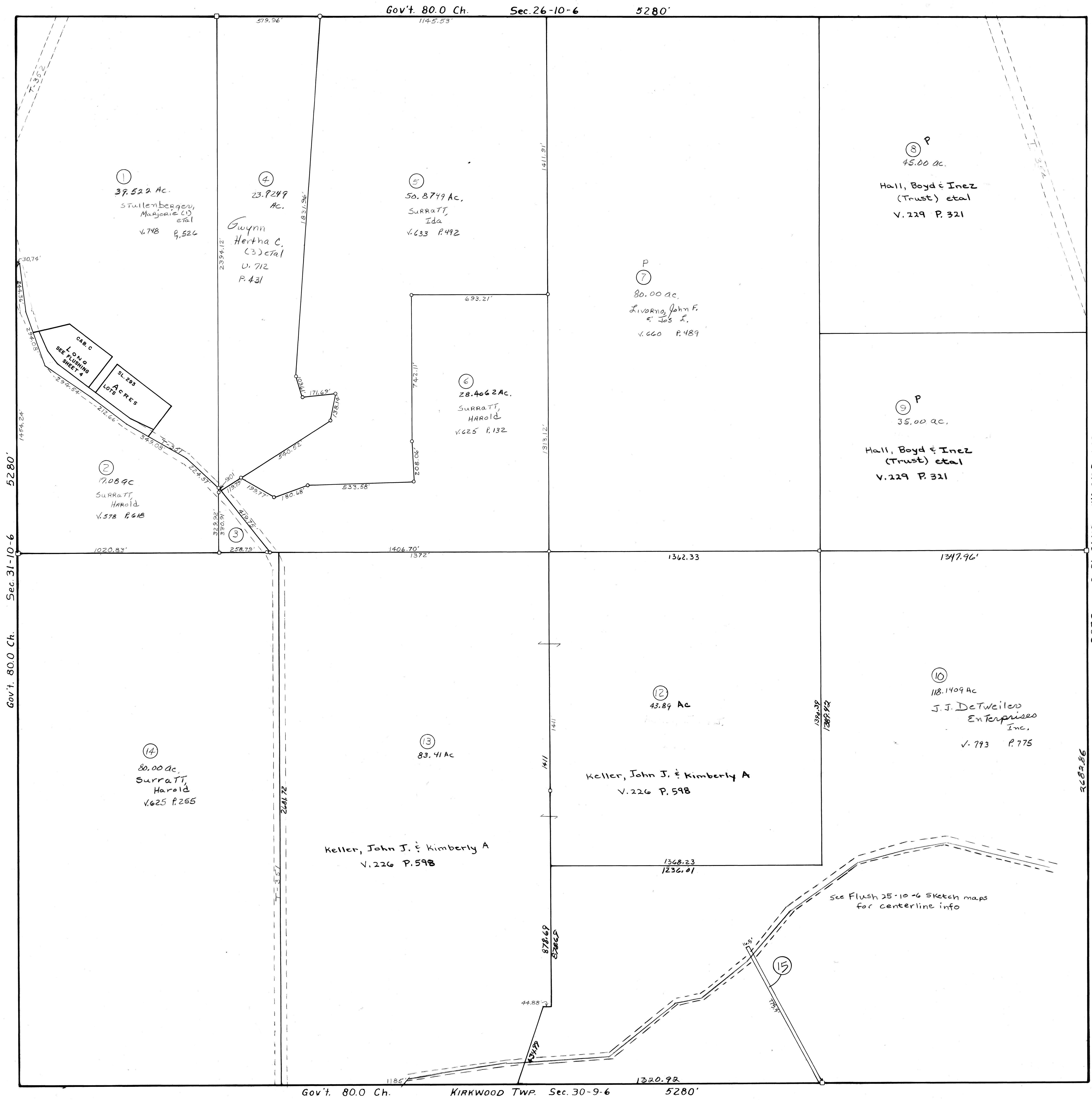
Sec. 25, T. 10, R. 6

SCALE 1" = 200'

FRED F. BENNETT COUNTY ENGINEER

REVISED 6-2011

NO.	NAME	VOL.	PG.	ACRES
3	Carney, Blanche L.	490	579	.983
19	WEAVER, PAT	664	217	0.39



Gov't. 80.0 Ch. Sec. 19-10-6 5280'

TRACT #11 Elim Comb w/#10

R625.86