

# FLUSHING

TOWNSHIP

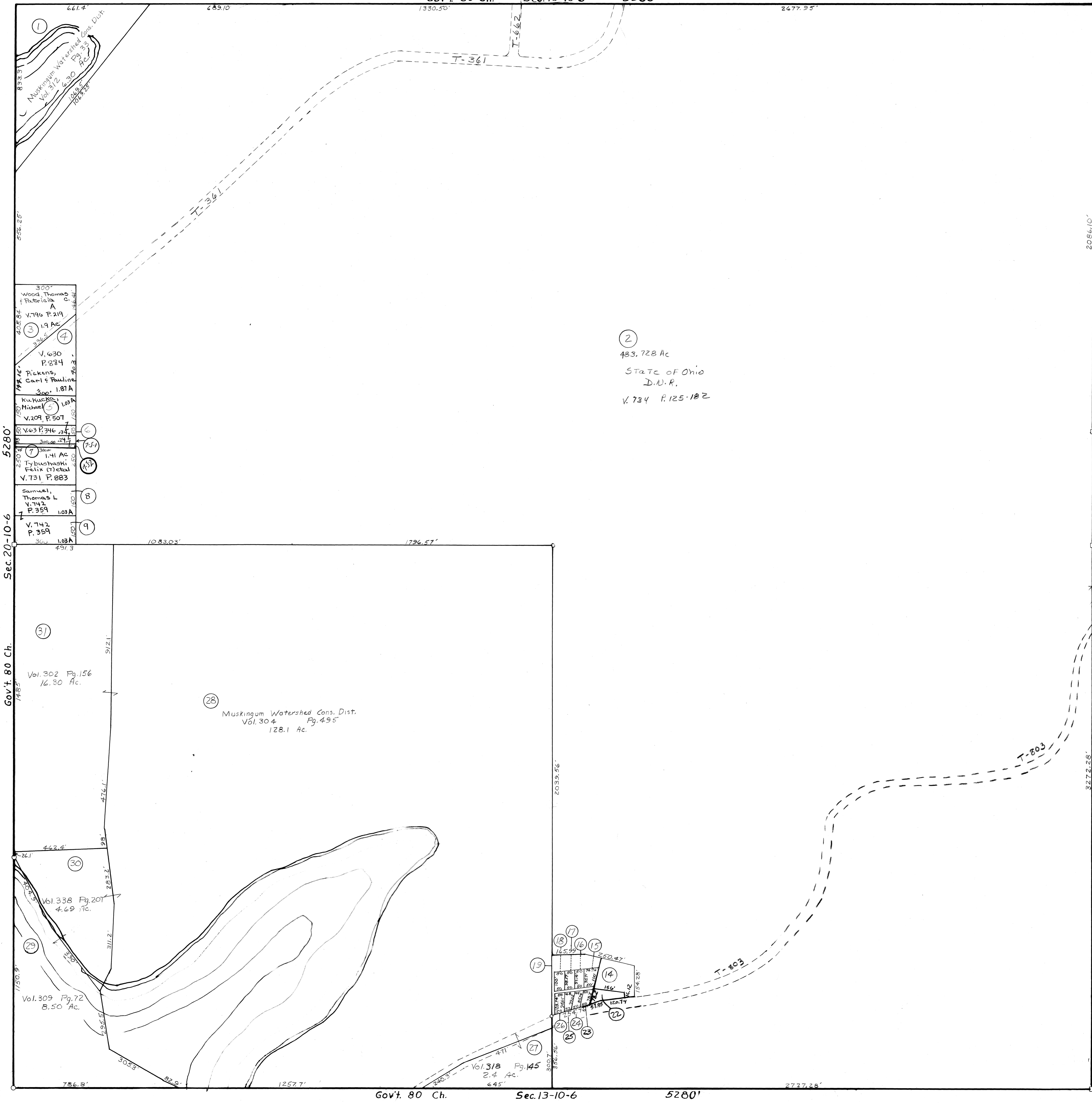
BELMONT COUNTY, OHIO 1970

## Sec. 14, T. 10, R. 6

SCALE 1" = 200'

FRED F. BENNETT COUNTY ENGINEER

REVISED 6-1971



| NO. | NAME                           | VOL. | PG. | ACRES |
|-----|--------------------------------|------|-----|-------|
| 22  | Hines, Henry                   | 784  | 187 | 0.159 |
| 14  | Stillwater Presbyterian Church | -    | -   | -     |
| 19  | Murphy, Walter B               | 262  | 216 | .336  |
| 15  | Gwynne, David C.               | 597  | 255 | .133  |
| 16  | do do                          | 597  | 255 | .111  |
| 17  | do do                          | 597  | 255 | .112  |
| 18  | Gwynne, David C.               | 597  | 255 | .113  |
| 23  | Gwynne, David C.               | 597  | 255 | .077  |
| 24  | do do do                       | 597  | 255 | .092  |
| 25  | do do do                       | 597  | 255 | .083  |
| 26  | Gwynne, David C.               | 597  | 255 | .111  |

TRACTS: 13-12-11-10 Eliminated Comb w/ #2 #20 & 21 " " w/ #22