

Gov't. 80.00 Ch. *N.* Sec. 3, T.10, R.6 5280.00'

FLUSHING

TOWNSHIP

BELMONT COUNTY, OHIO 1970

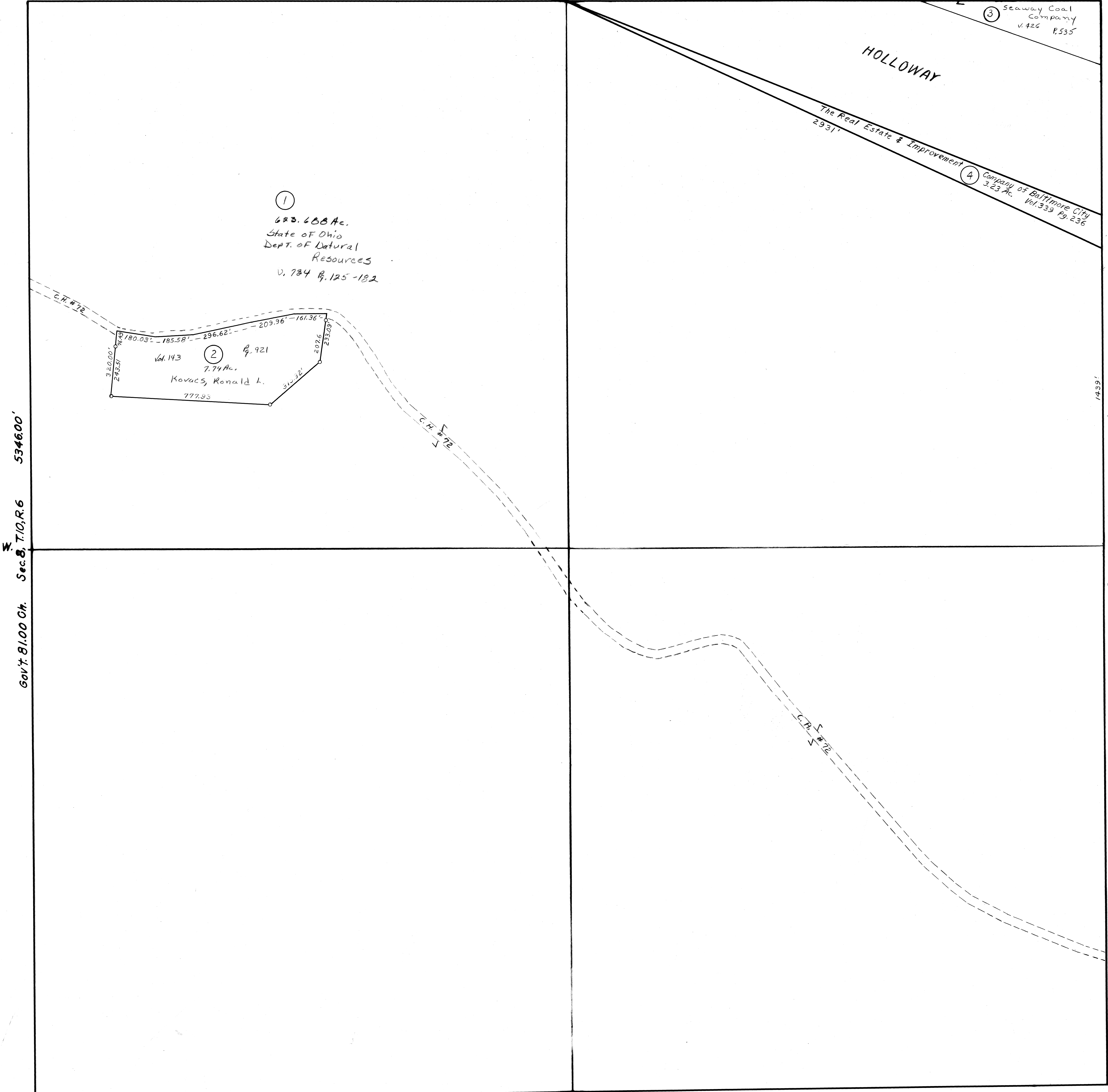
Sec. 2, T.10, R.6

SCALE 1" = 200'

FRED F BENNETT COUNTY ENGINEER

REVISED 10-10-70

NO.	NAME	VOL.	PG.	ACRES



Tracts #5, 6, 7 Elim Comb w/ #1

Gov't. 80.00 Ch. *S.* Sec. 1, T.10, R.6 5280.00'