

COLERAIN

TOWNSHIP

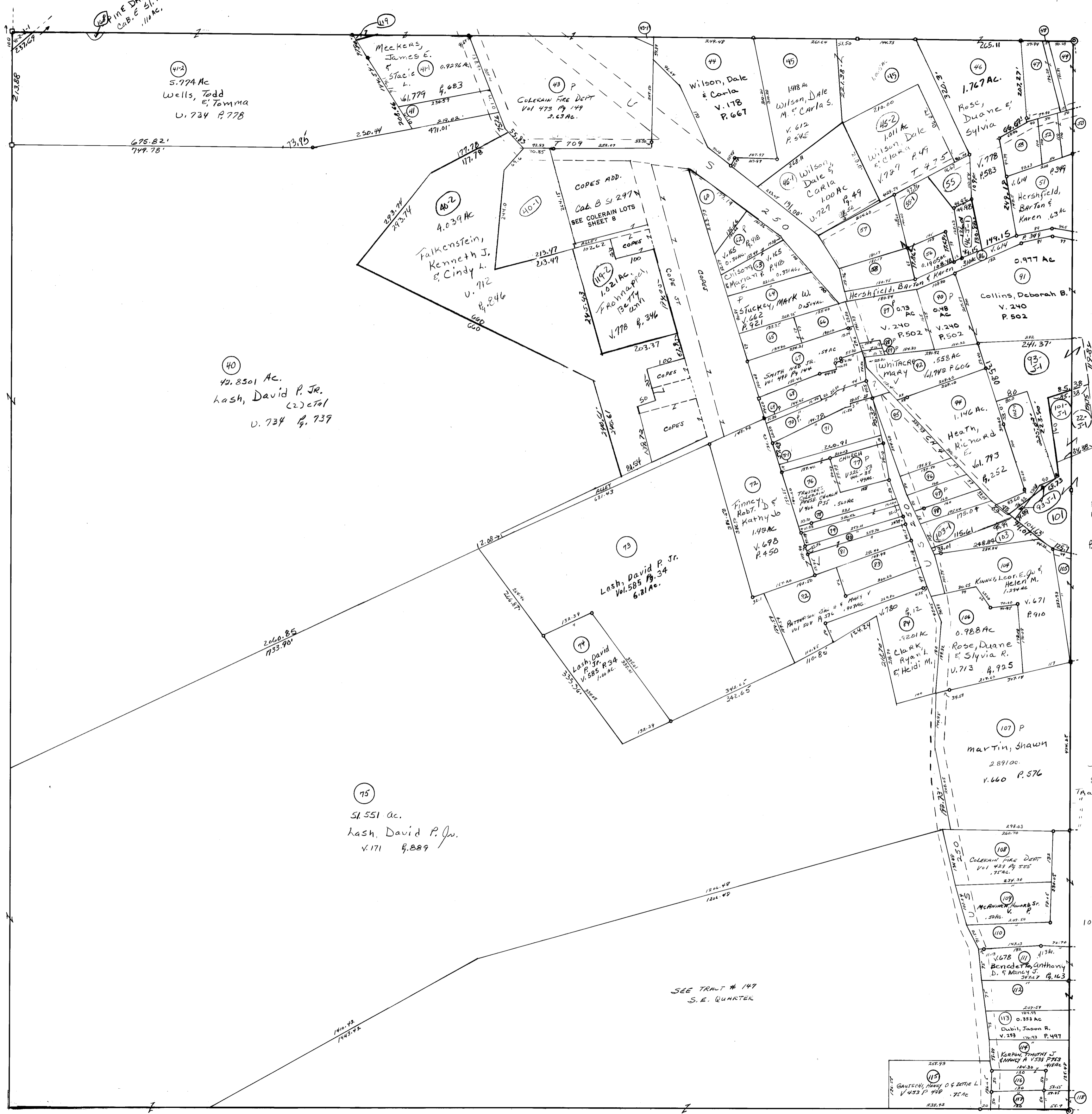
BELMONT COUNTY, OHIO 1975

NORTHEAST QUARTER Sec. 13, T. 7, R. 3

SCALE IN FEET
0 50 100 200 300

FRED F. BENNETT COUNTY ENGINEER

REVISED 2011



NO	NAME	VOL	PG	ACRES
42-1	Stuckey, Scott & Darlene	771	5	1.37
43-1	CITY OF MANTON FERRI	472	102	0.01
47	Sobota, Michael	753	70	.337
48	Sobota, Michael	753	70	.0634
49	Sobota, Jeffrey W.	594	73	0.140
50	Hunter, Barbara	105	520	.067
51	Do	105	520	.124
52	Mamons, Larry J.	681	736	0.2292
53	Hopburn, John E. & Catherine P.	385	401	0.02
60	Drauzin, James F. & Pamela J.	145	248	0.2777
119	BOLTZ, David W.	518	337	.7311
65	Thomas, Casey E.	72	261	0.21
64	Thomas, Casey E.	72	261	0.196
67	Kennedy, Jan G. & Bruce A.	780	714	0.365
68	Church, The Colerain United Presbyterian	571	214	0.06
70	Kennedy, Jan G. & Bruce A.	780	714	0.306
71	TRUSTEES COLERAIN PRESB CHURCH	460	337	0.173
78	Do	482	571	0.0834
79	Do	482	571	0.183
80	Finney, Robt D. & Kathy Jo	698	460	0.1387
41	Guzik, Paul Sr. et al	578	200	0.220
101	Busch, Dennis W. (etal)	153	914	0.300
82	Collins, Deborah B.	240	502	0.025
83	"	240	502	0.01
85	NEER, Howard L. & Lois	538	89	0.435
86	Finney, Robt & Kathy Jo	686	74	.17
87	Gandy, Rebecca Ann (etal)	781	664	0.12
88	Small, Linda M. & Lillian M.	99	272	0.06
93-1	Nagel, William J. & Nancy E.	726	849	0.712
105	Mitchelli, Robt. A.	703	487	0.13
116	KORON, TIMOTHY J. & NANCY A.	538	723	0.138
117	PARKS, Lisa M.	754	173	0.14
118	Do	"	"	0.07
40-1	Falkenstein, Kenneth J. & Cindy A.	658	107	1.00
58	Coffman, Chas E. Jr.	778	908	0.25
103	Provenzano, Lori A.	91	440	.283
103-1	Finney, Robt & Kathy Jo	623	701	.294
41-2	Wilson, Michael R. & Renee M.	675	399	0.656
55	Stuckey, Scott R. & Darlene	710	875	0.1968
102-1	Nagel, William J. & Nancy E.	726	846	0.483
55-1	Stuckey, David W. & Junita	710	873	0.7480
71	McDonald, Steven C. & Jacqueline	771	68	0.985
83	Thea Key, Richard M.	219	616	0.370
68	Provenzano, Dick & Eva	734	778	.110

Tract #59 & 61 Elim Comb w/ #60
 85 Eliminated Comb w/ #75
 Tract Nos 99-1, 100-1, 100-2, 100-3 Eliminated Comb w/ #101
 Nos 93, 99, 100, 102 Eliminated Comb w/ #101
 # 119-1 Elim Comb w/ #40-2
 # 119-1, 42 Elim Comb w/ #40
 # 42-1 Elim

119	Zingo, John M. & Catherine M.	791	443	0.006
112	Carpenter, Joel A.	216	547	0.367
56	Edge, Teik	115	176	0.1905
57	Edge, Teik	115	176	0.5327
110	Jenkins, George H. & Ruth A.	744	190	.50
81	Finney, Robt D. & Kathy	698	450	.308
101-1	Nagel, William J. & Nancy E.	153	675	0.118

SEE TRACT # 147
 S.E. QUARTER

41-2
 5.774 Ac
 Wells, Todd
 & Tammy
 U. 734 P. 778

40
 42.8501 Ac.
 Lash, David P. Jr.
 (2) et al
 U. 734 P. 739

75
 51.551 ac.
 Lash, David P. Jr.
 U. 171 P. 889

73
 Lash, David P. Jr.
 Vol. 585 P. 34
 6.21 Ac.

74
 Lash, David
 P. Jr.
 Vol. 585 P. 34
 1.00 Ac.

107 P
 Martin, Shawn
 289100
 V. 660 P. 576