

YORKVILLE

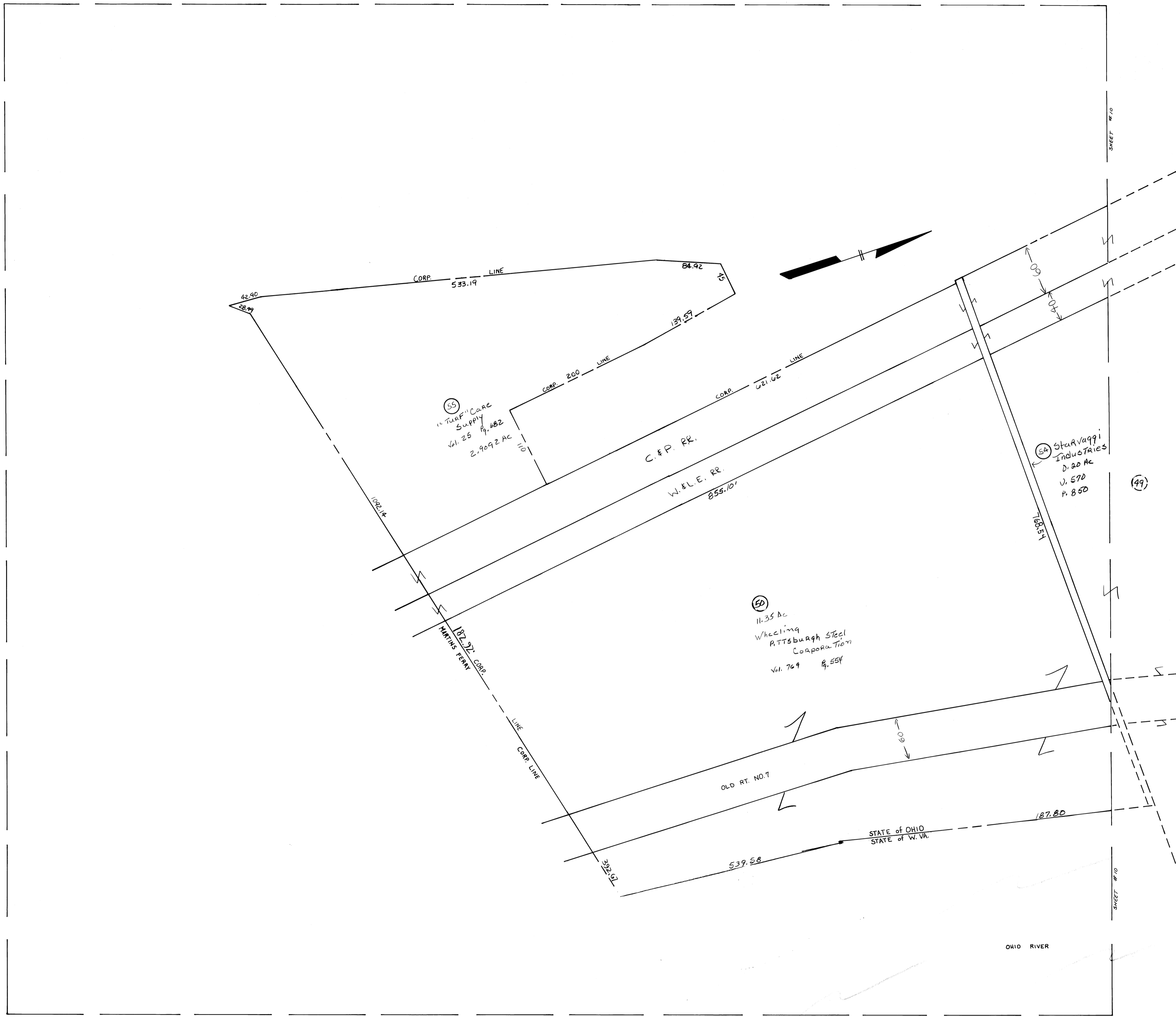
PEASE TOWNSHIP
SECTION 20 T.4 R.2
BELMONT COUNTY, OHIO 1978

FRED F. BENNETT COUNTY ENGINEER

SCALE IN FEET
0 50 100 150

REVISED 4-2012

LOT	ADD.	NAME	VOL.	PG.	AC.



OHIO RIVER