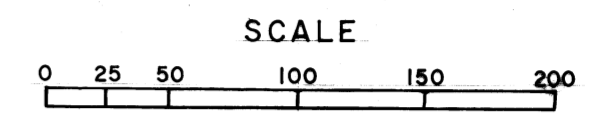


1st. & 2nd ADD'NS WM. SCATTERDAY SUBDIVISION

YORK TOWNSHIP
BELMONT COUNTY, OHIO 1984

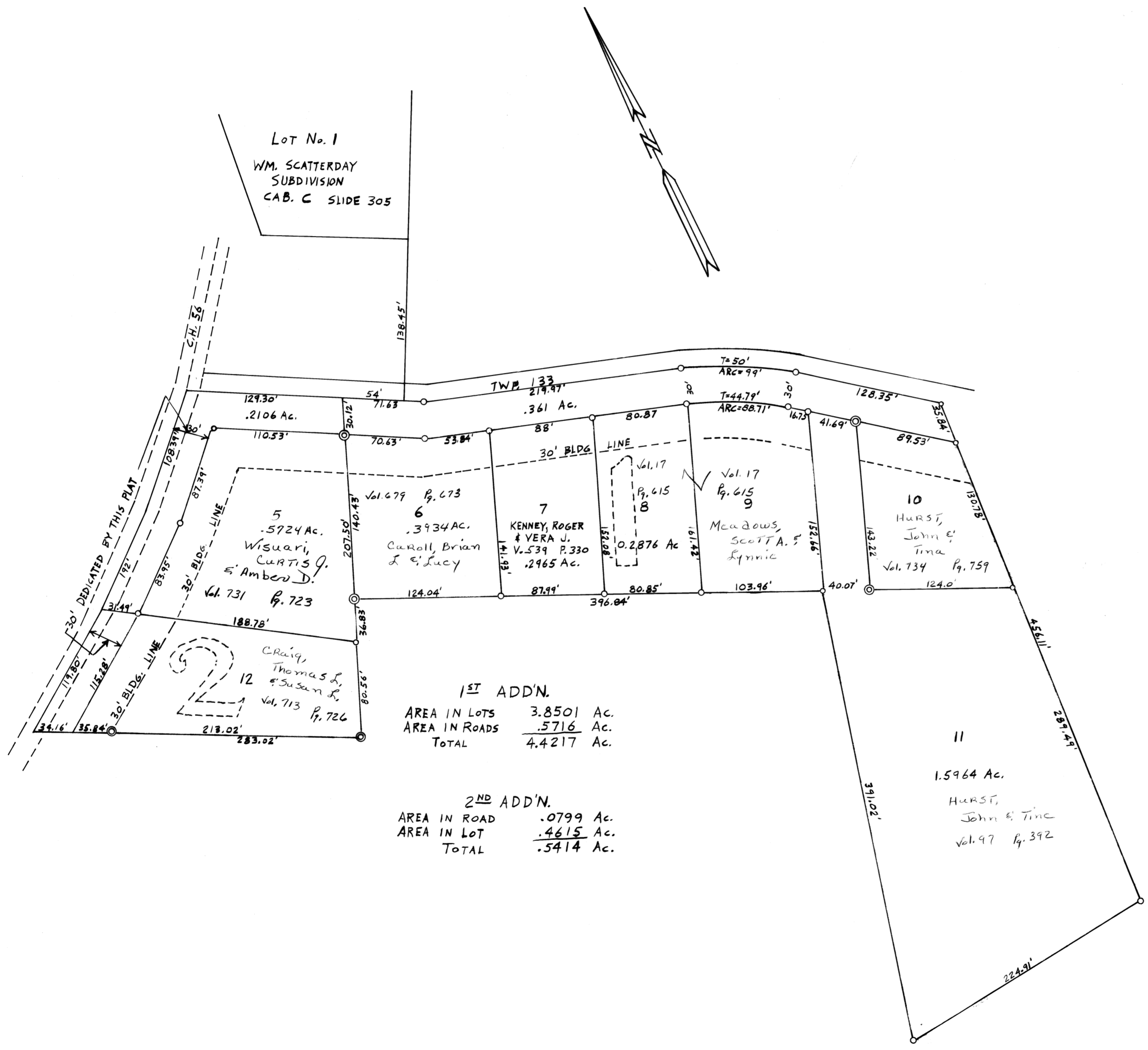
SEC. 8, T.4, R.3



FRED F. BENNETT COUNTY ENGINEER
1st. RECORDED CAB. A SLIDE 79
2nd RECORDED CAB. C SLIDE 205
REVISED 3-2011

NO.	NAME	VOL.	PG.	ACRES

1 1st ADDITION
2 2nd ADDITION



1ST ADD'N.
AREA IN LOTS 3.8501 Ac.
AREA IN ROADS .5716 Ac.
TOTAL 4.4217 Ac.

2ND ADD'N.
AREA IN ROAD .0799 Ac.
AREA IN LOT .4615 Ac.
TOTAL .5414 Ac.