

BANK ADDITION

SUB-DIVISION OF LANDS

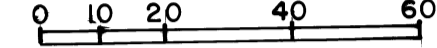
YORK TOWNSHIP SEC. 8, T.4, R.3

BELMONT COUNTY, OHIO 1984

FRED F. BENNETT, COUNTY ENGINEER

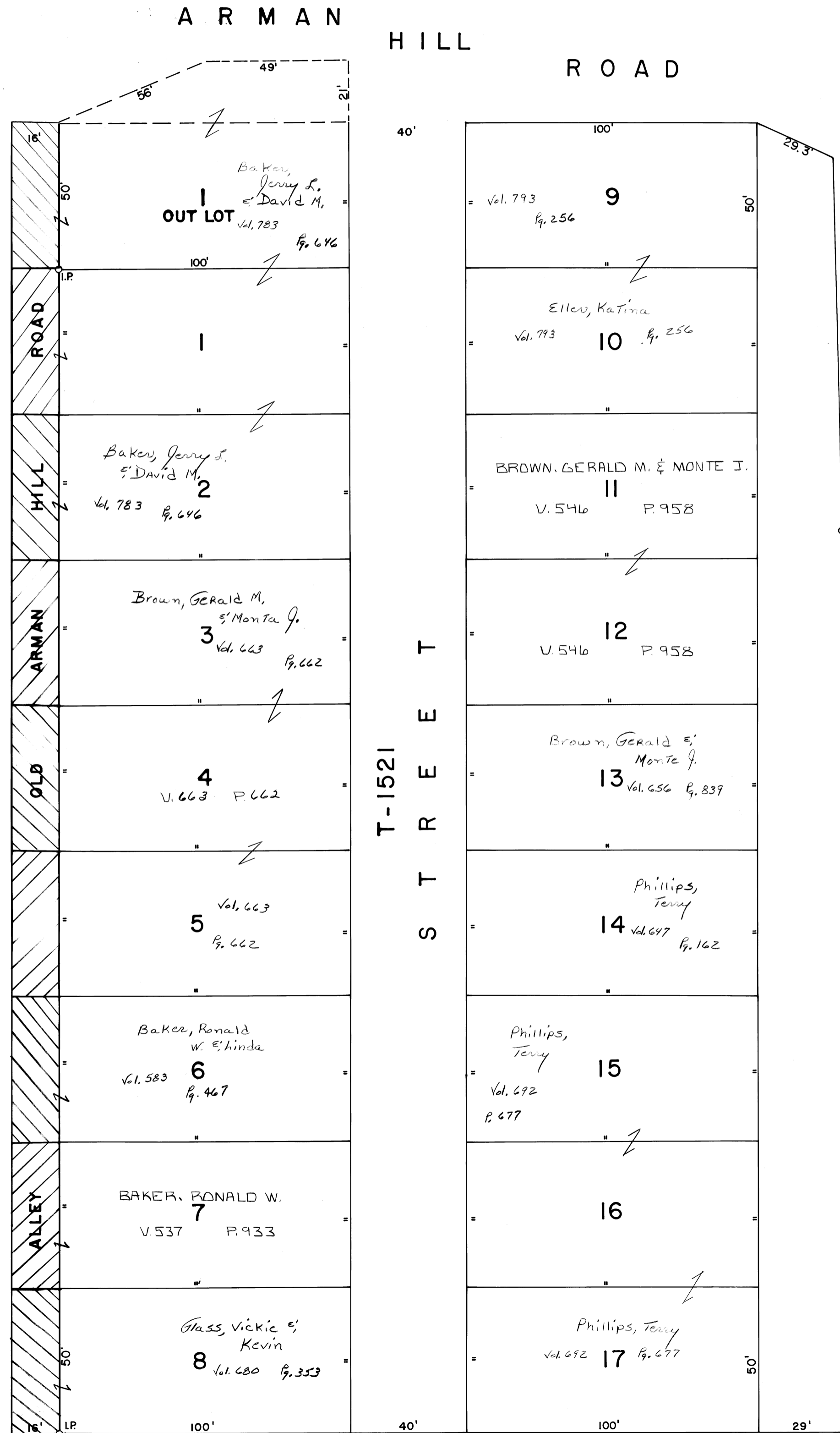
SCALE 1" = 20'

SCALE IN FEET



RECORDED CABINET D SLIDE 204

REVISED 3-2011



For Vacation of alley, See deed Vol. 642 Pg. 207
Road Imp. 906