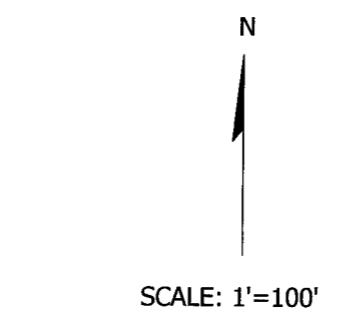
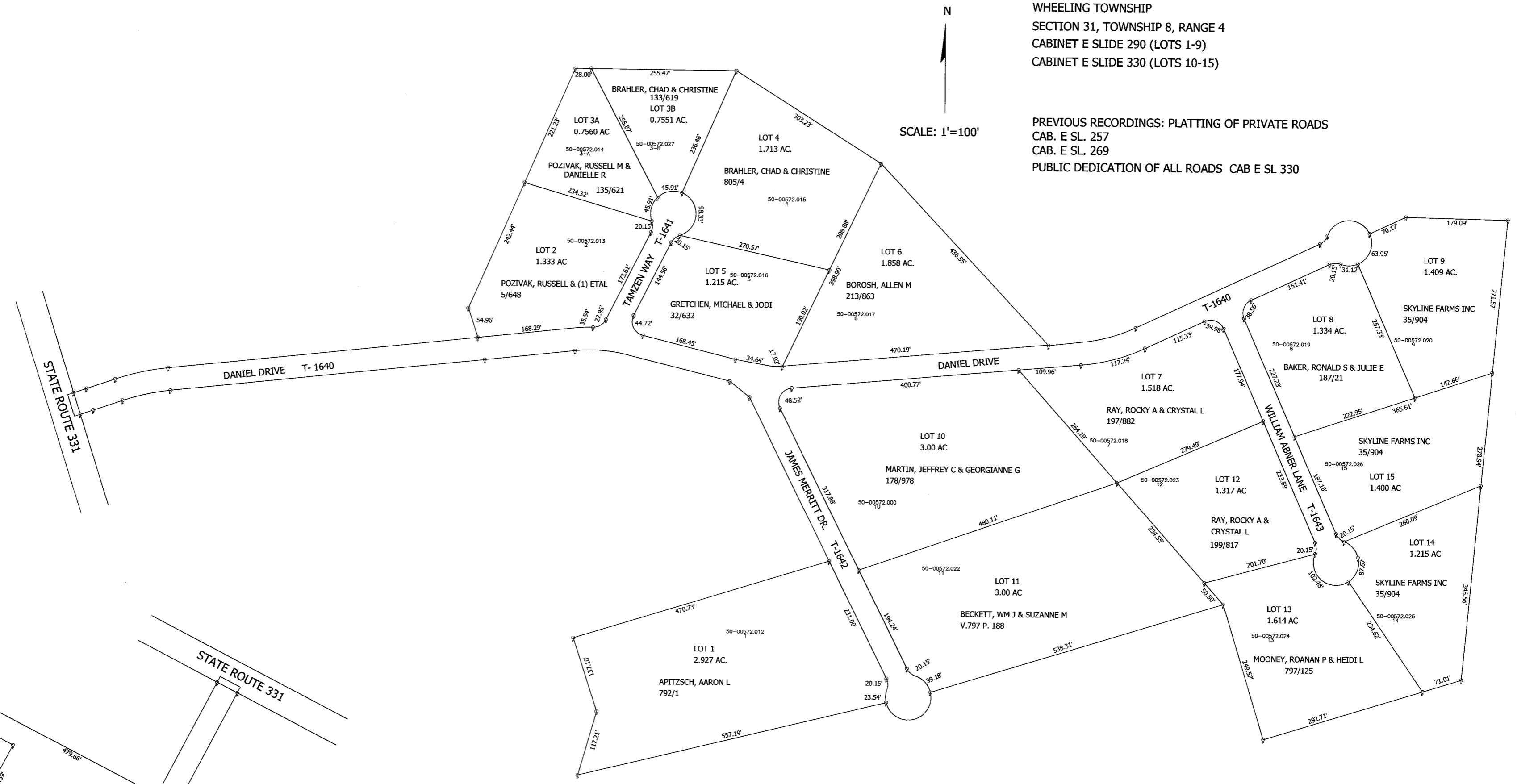


BENTLEY ESTATES ADDITION

WHEELING TOWNSHIP
SECTION 31, TOWNSHIP 8, RANGE 4
CABINET E SLIDE 290 (LOTS 1-9)
CABINET E SLIDE 330 (LOTS 10-15)

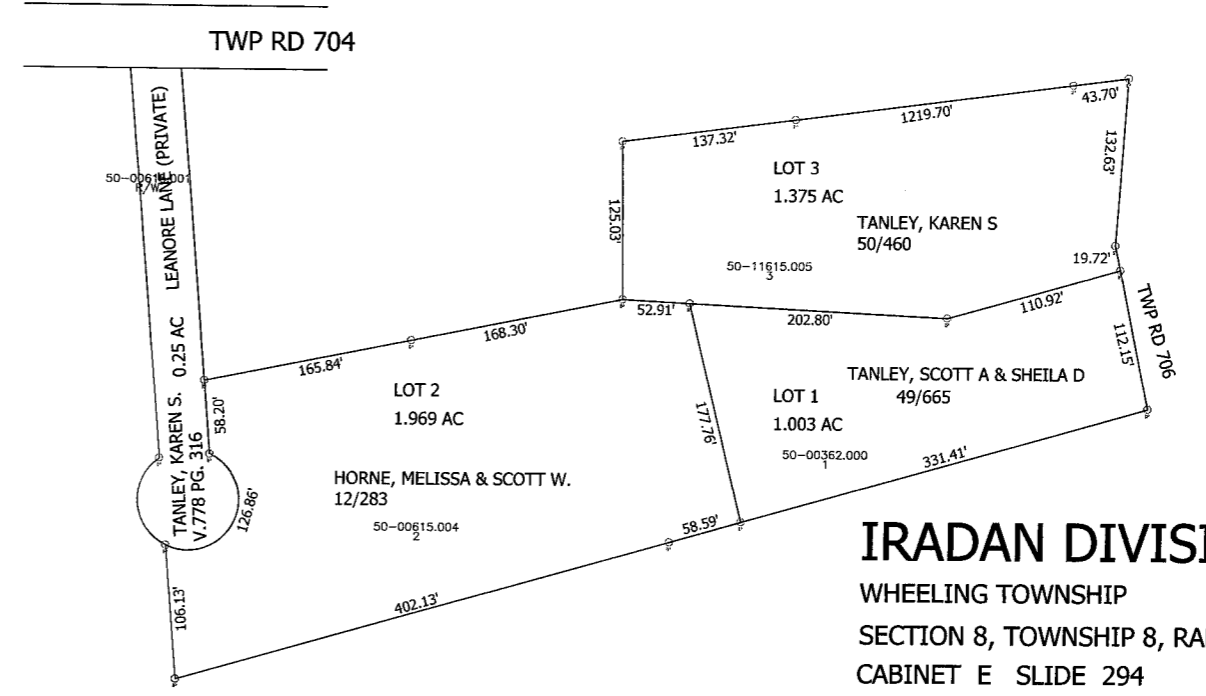
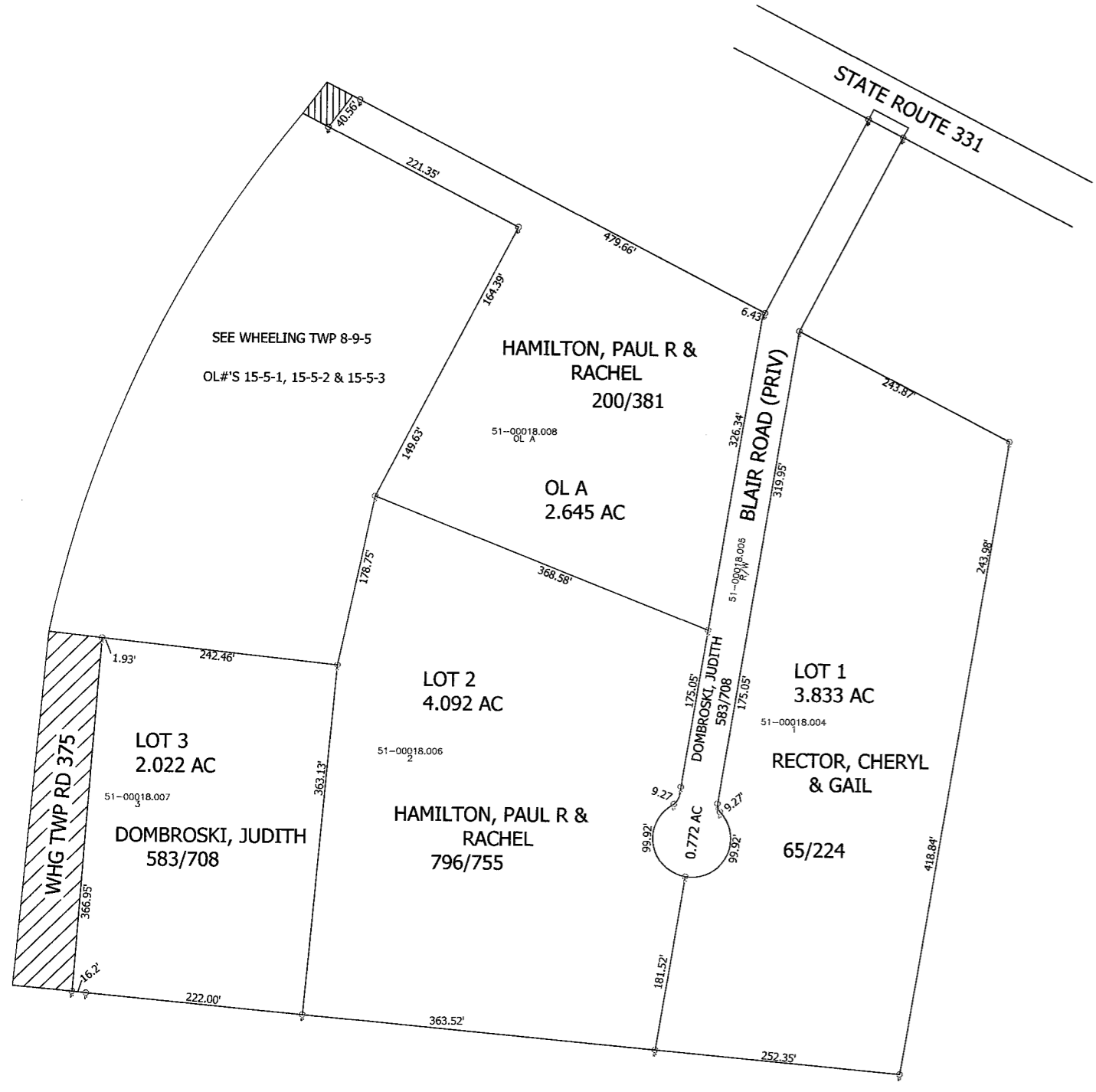
PREVIOUS RECORDINGS: PLATTING OF PRIVATE ROADS
CAB. E SL. 257
CAB. E SL. 269
PUBLIC DEDICATION OF ALL ROADS CAB E SL 330



BLAIR ADDITION

WHEELING TOWNSHIP SEC 8 T-9 R-5

- BLAIR ADDITION - LOT 1 & PRIV RD CAB E SL 275
- BLAIR SECOND ADDITION - LOT 2 CAB E SL 328
- BLAIR THIRD ADDITION - LOT 3 CAB E SL 348
- REPLAT OF LOT #1 - BLAIR ADD'N CAB E SL 374
- BLAIR FOURTH ADDITION - OL A CAB F SL 38



IRADAN DIVISION

WHEELING TOWNSHIP
SECTION 8, TOWNSHIP 8, RANGE 4
CABINET E SLIDE 294

PREVIOUS RECORDINGS: PLATTING OF LEANORE LANE (PRIVATE)
CABINET E SLIDE 189

