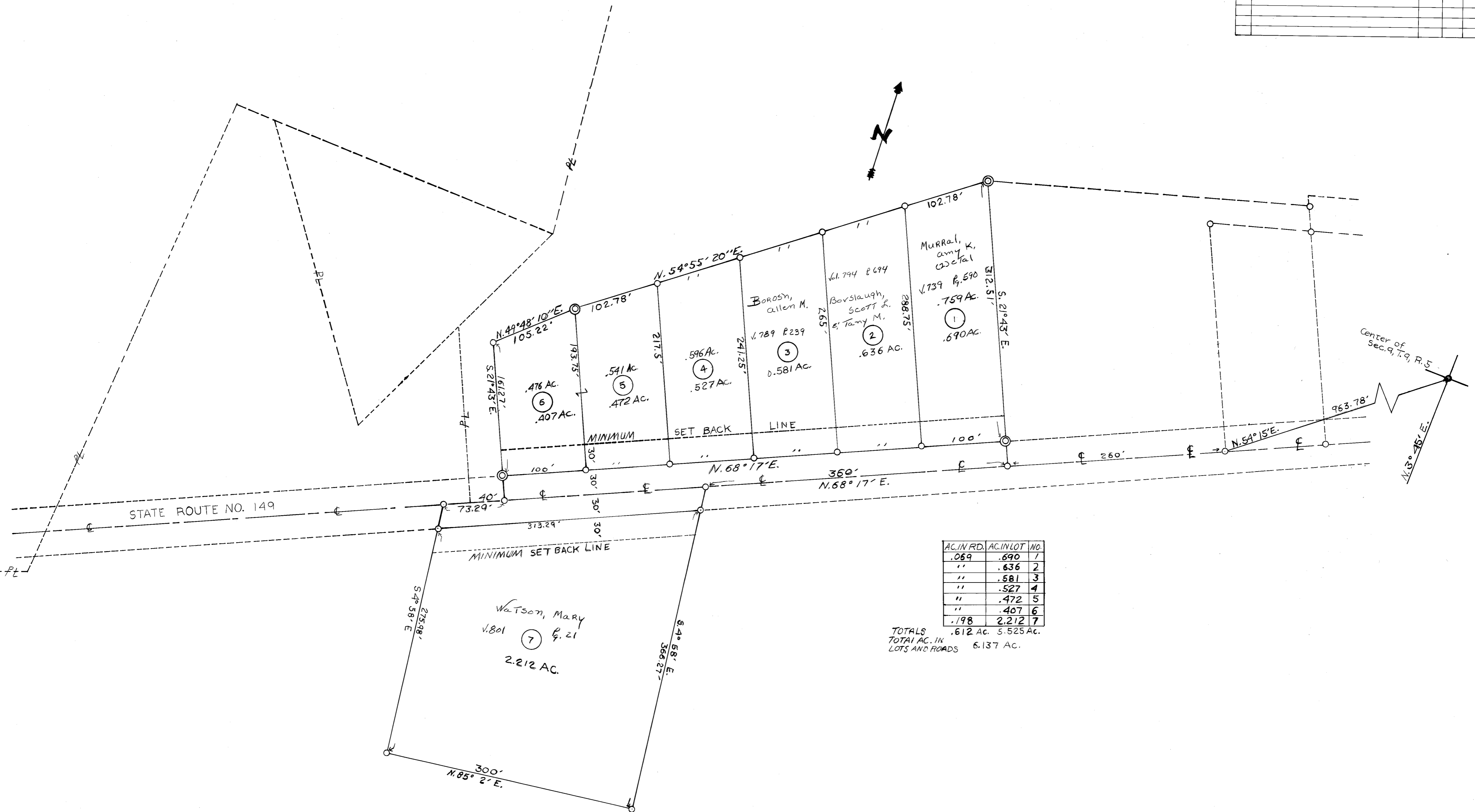


BUGALA'S SUBDIVISION

WHEELING TOWNSHIP
 BELMONT COUNTY, OHIO 1971
 Sec. 9, T.9, R.5
 SCALE 1" = 50'
 FRED F BENNETT COUNTY ENGINEER
 CABINET A SLIDE 41

REVISED 2-2011

NO.	NAME	VOL.	PG.	ACRES
4	Shaver, Scott E. (1) et al	773	863	.527
5	do do do	773	863	.472
6	Shaver, Scott E. (1) et al	773	863	.407



AC. IN RD.	AC. IN LOT	NO.
.069	.690	1
"	.636	2
"	.581	3
"	.527	4
"	.472	5
"	.407	6
.198	2.212	7

TOTALS
 TOTAL AC. IN LOTS AND ROADS 6.137 AC.
 .612 AC. 5.525 AC.