

LAISLE SUBDIVISION

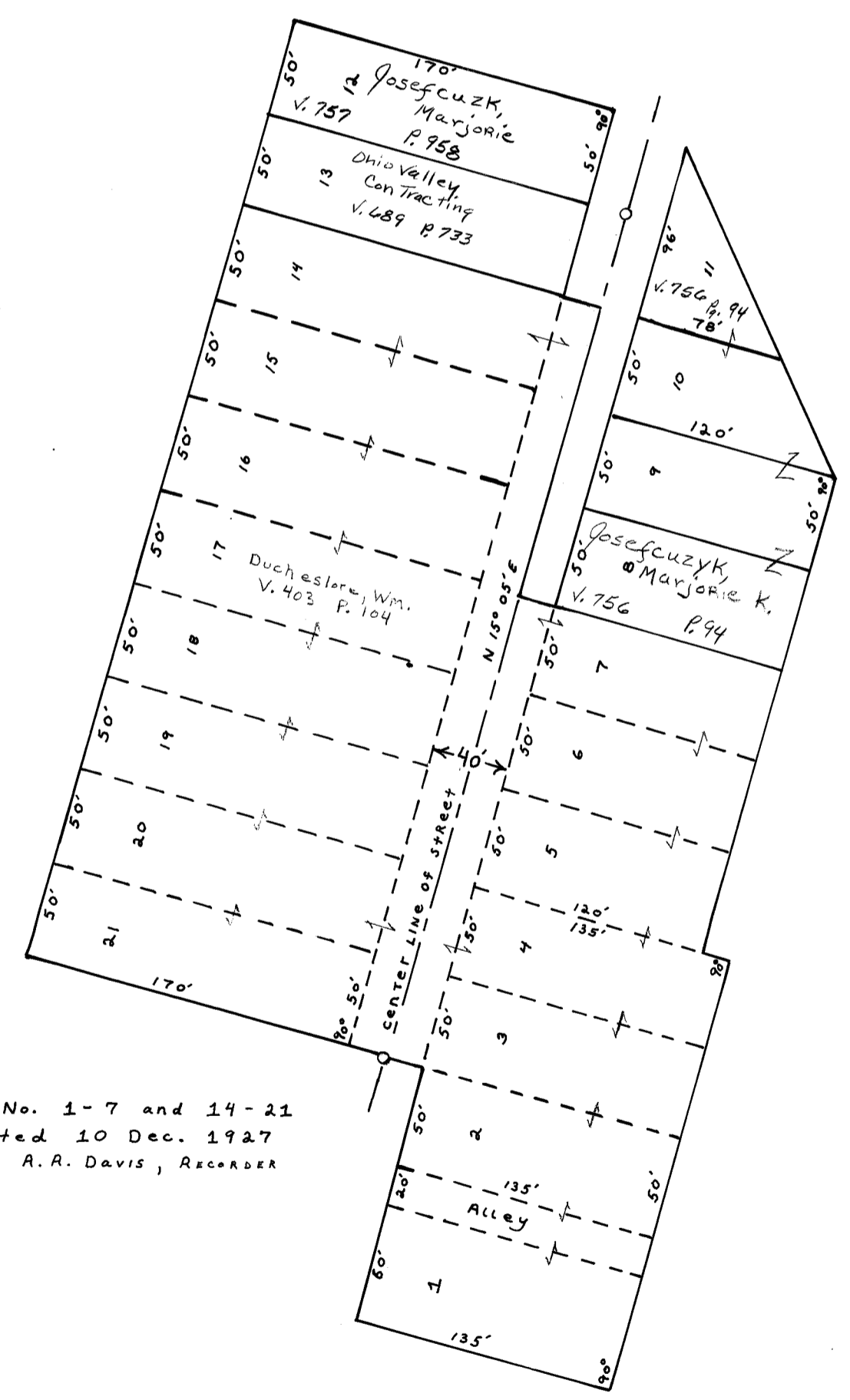
WHEELING TOWNSHIP
BELMONT COUNTY, OHIO 1971

Sec. 2, T.9, R.5

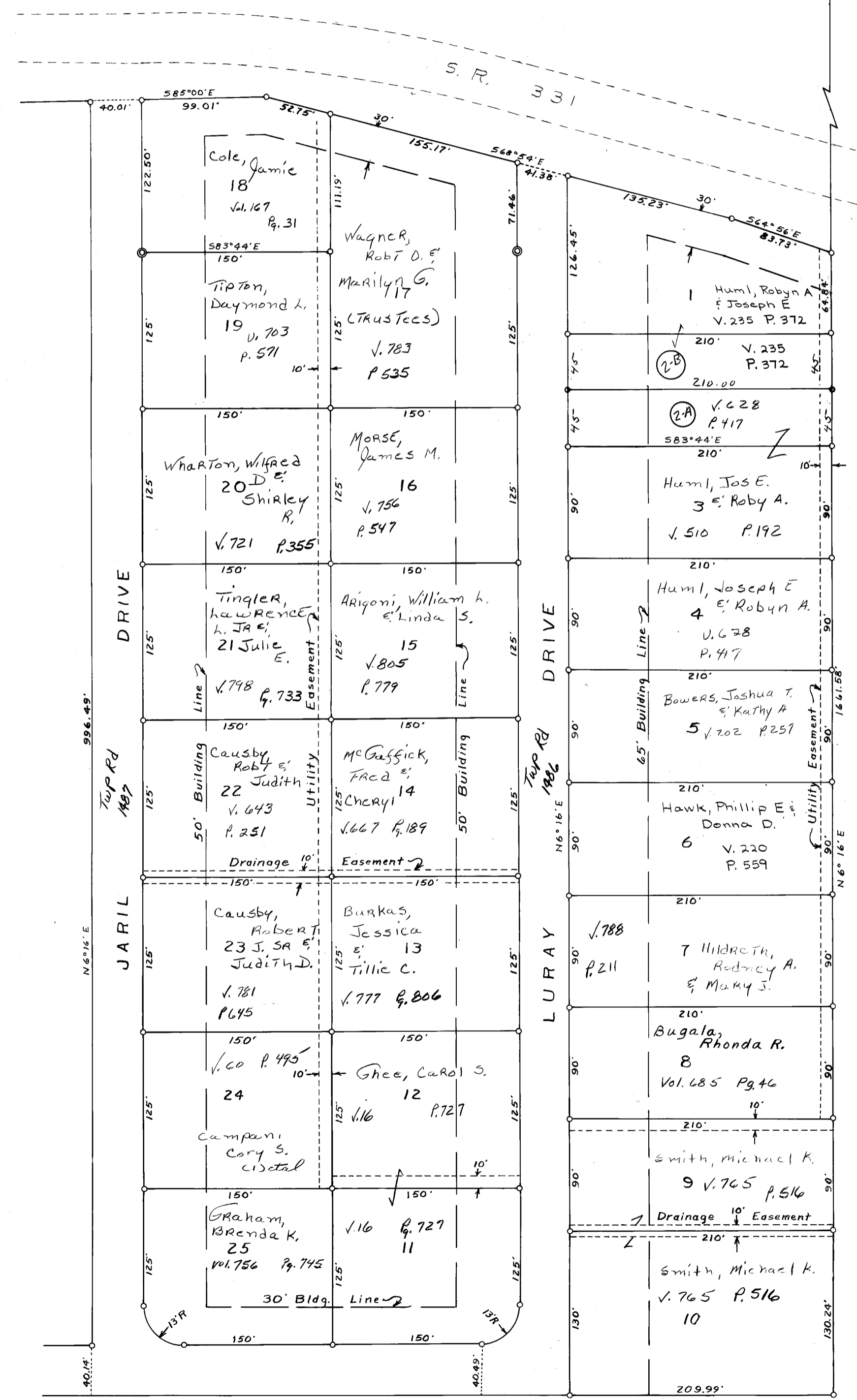
SCALE 1" = 50'

FRED F BENNETT COUNTY ENGINEER
CABINET A SLIDE 62

REVISED 2-2011



Lots No. 1-7 and 14-21
Vacated 10 Dec. 1927
by A.R. Davis, Recorder



NORTH BLAINEVILLE

WHEELING TOWNSHIP
BELMONT COUNTY, OHIO 1971

Sec. 1, T.8, R.4

SCALE 1" = 50'

COUNTY ENGINEER
CABINET B SLIDE 141

REVISED 10-2008 6-2009