

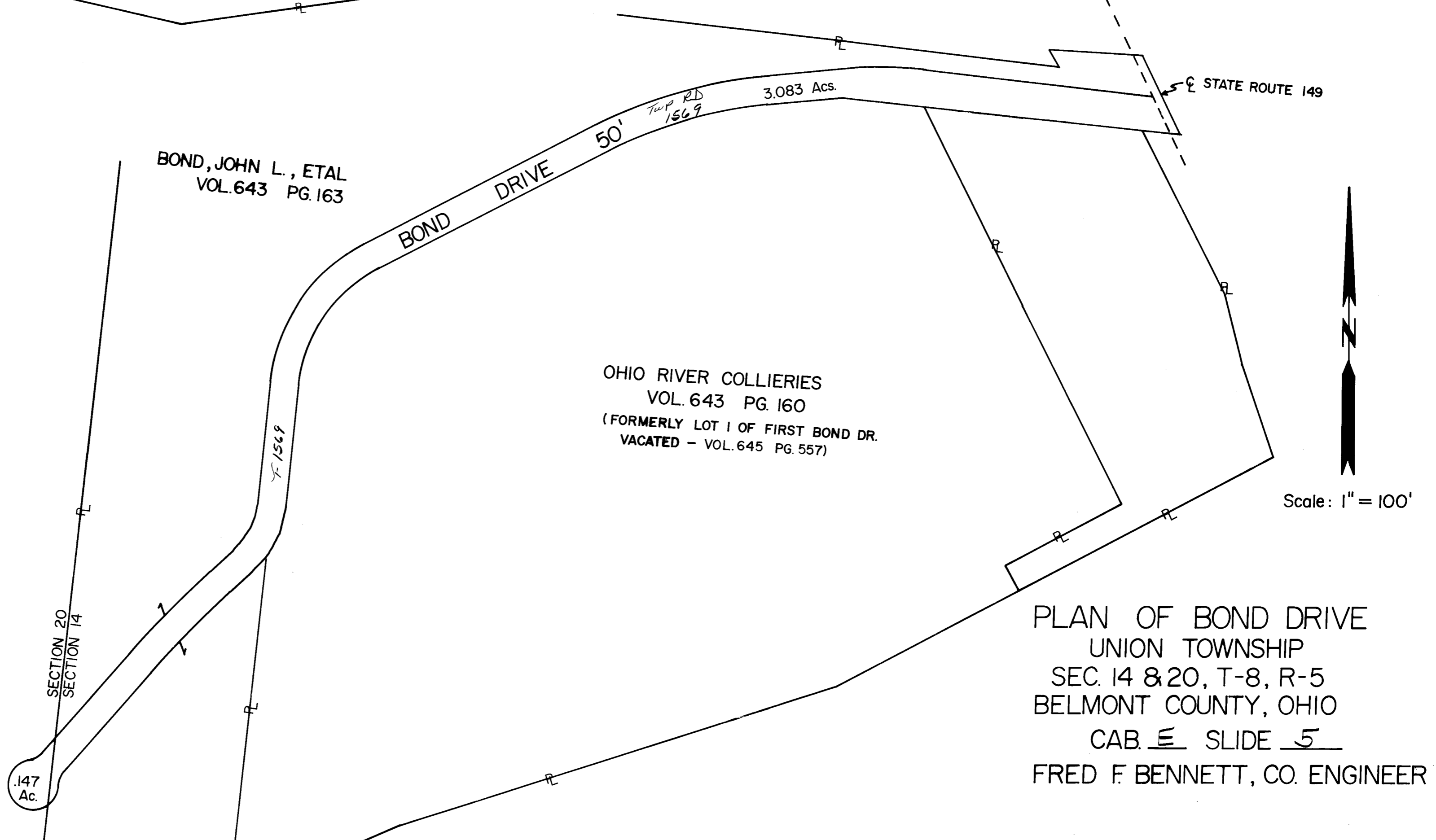
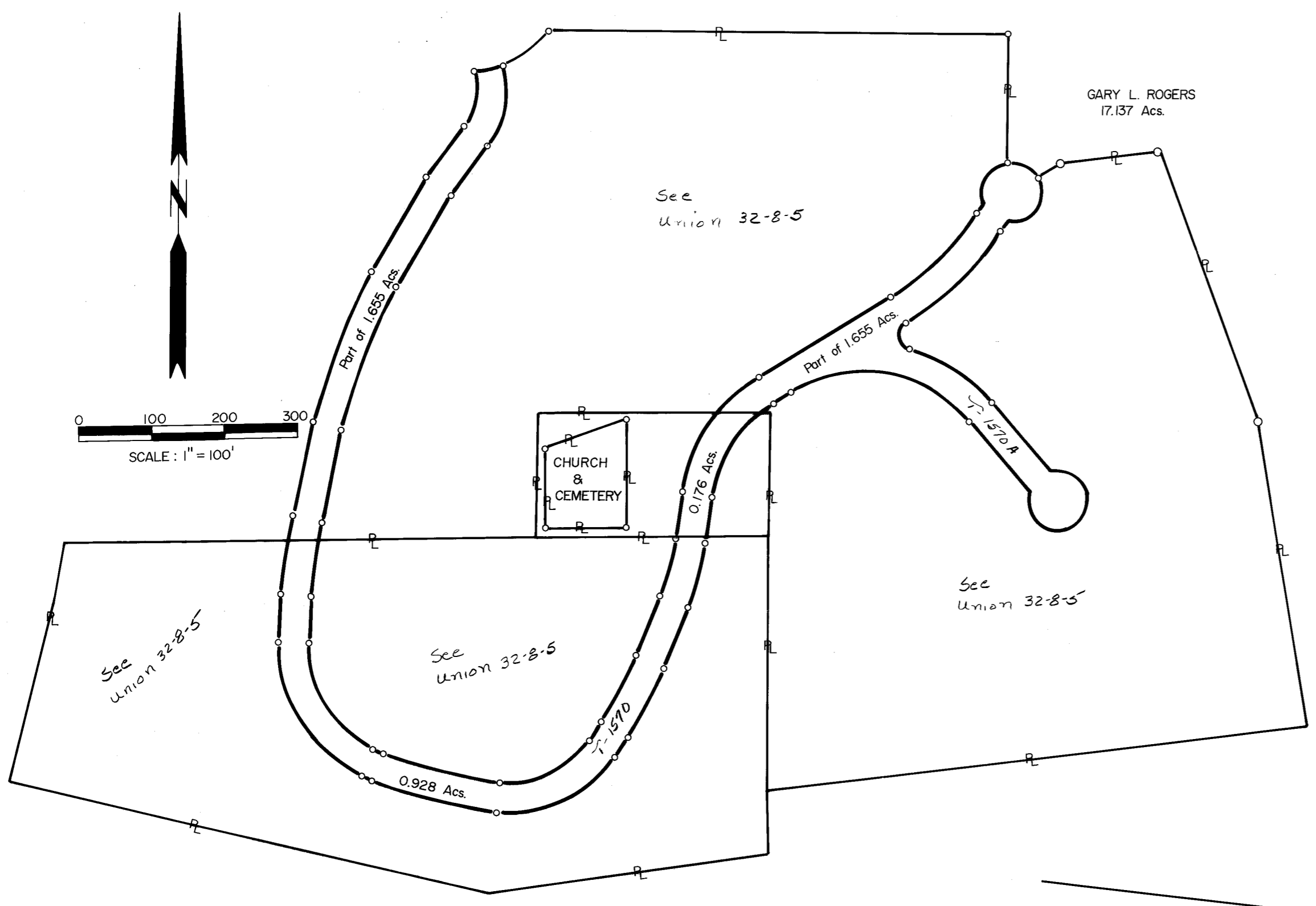
MEDITERRANEAN DRIVE

UNION TOWNSHIP
SECTION 32, T-8, R-5
BELMONT COUNTY, OHIO
CAB B SLIDE 368

FRED F. BENNETT, CO. ENGINEER

Revised	1-2010	2-2011		
---------	--------	--------	--	--

NO.	NAME	VOL.	PG.



PLAN OF BOND DRIVE
UNION TOWNSHIP
SEC. 14 & 20, T-8, R-5
BELMONT COUNTY, OHIO
CAB E SLIDE 5
FRED F. BENNETT, CO. ENGINEER