

LAFFERTY FARM ADDITION

UNION TOWNSHIP
BELMONT COUNTY, OHIO 1970

Sec.12,T.8,R.5

SCALE 1" = 50'

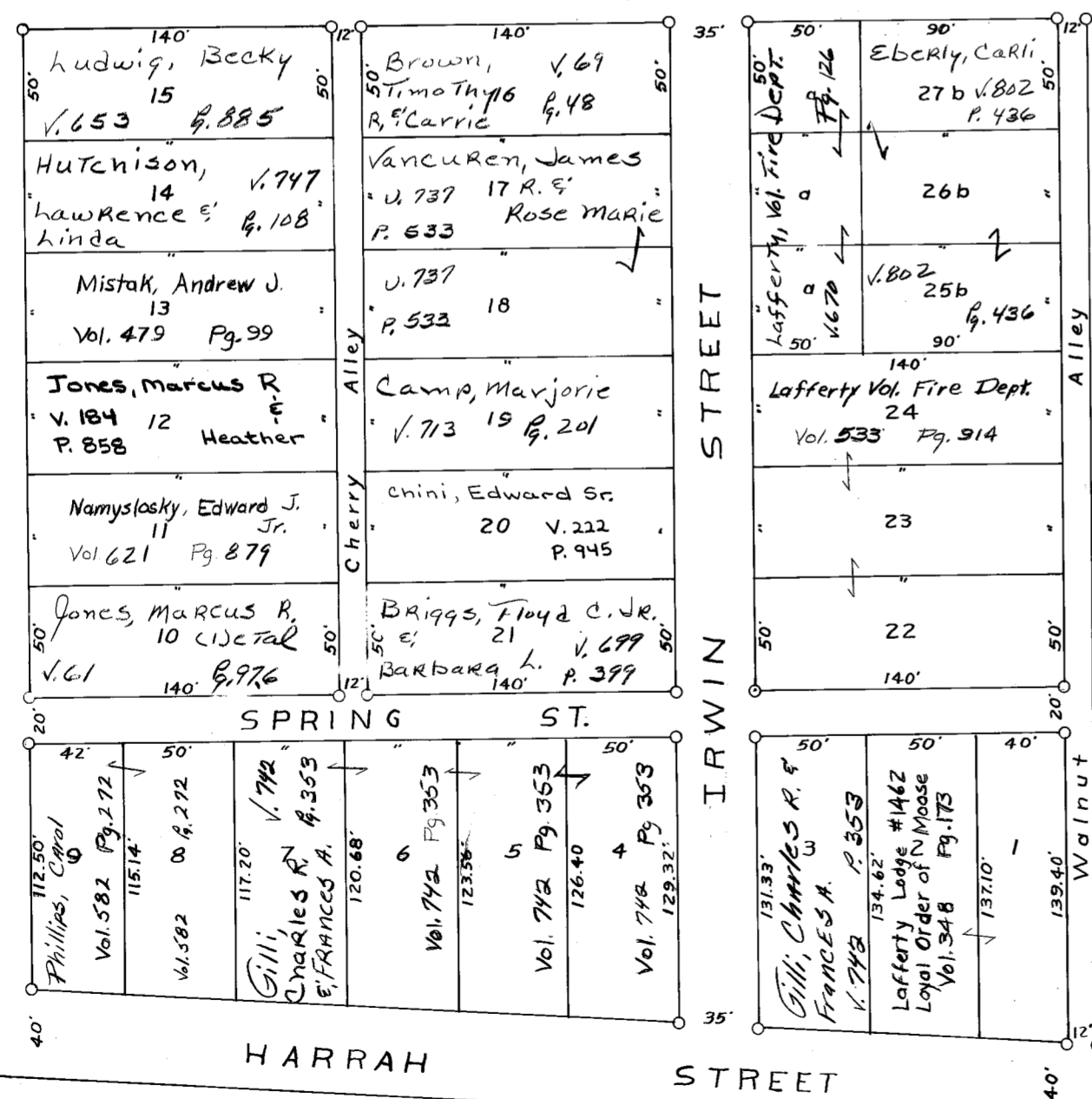
FRED F BENNETT COUNTY ENGINEER

REVISED 1-2010 2-2011

ALLEY PART VACATED COMMISSIONERS JOURNAL
Vol. 47 Pg. 459 ROAD BOOK 13 Pg. 423
Sept. 8, 1975

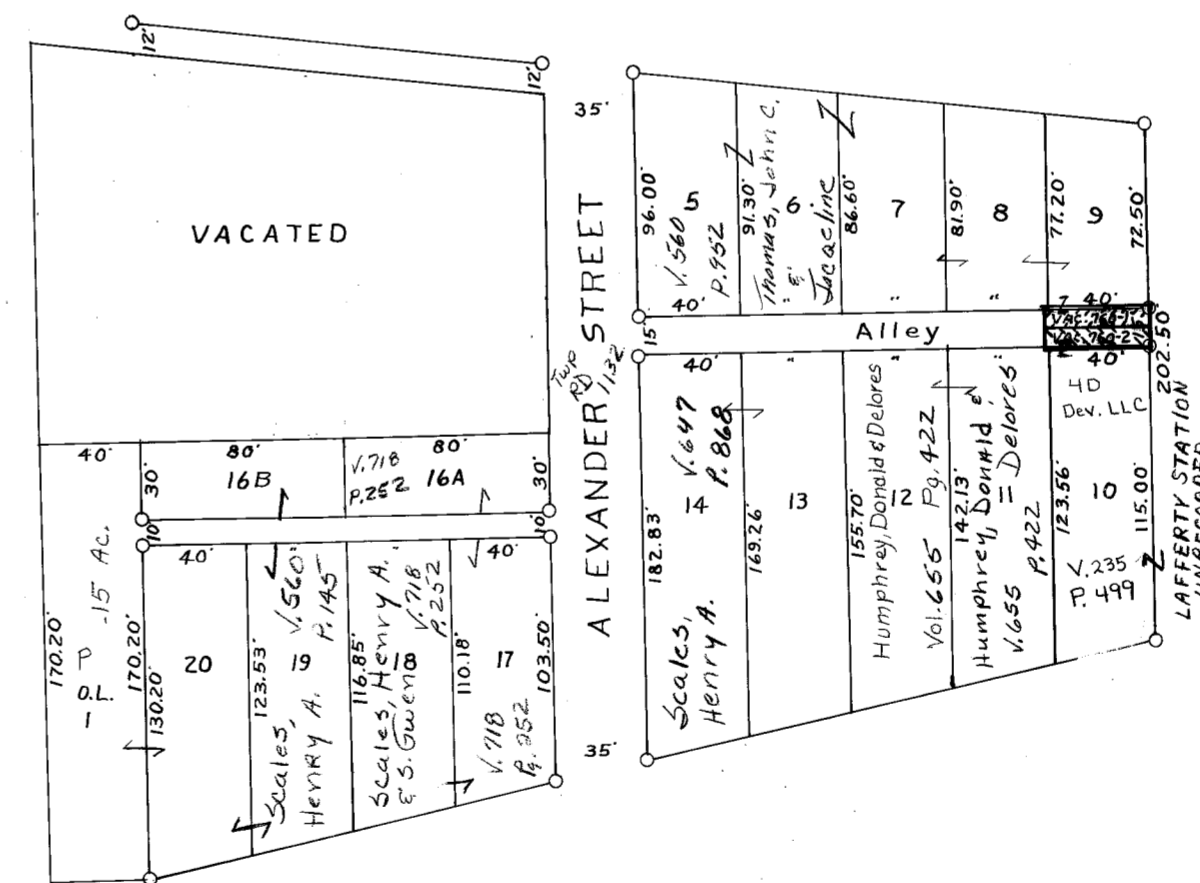
LAFFERTY FARM 2nd. ADDITION

Cab B SI.143



LAFFERTY FARM ADDITION

Cab. B SI.142



LAFFERTY FARM 2nd. ADDITION

UNION TOWNSHIP
BELMONT COUNTY, OHIO 1970

Sec.12,T.8,R.5

SCALE 1" = 50'

FRED F BENNETT COUNTY ENGINEER

REVISED