

JORDEN'S 1st. ADD'N.

UNION TOWNSHIP
BELMONT COUNTY, OHIO 1970

Sec. 6, T. 8, R. 5

SCALE 1" = 50'

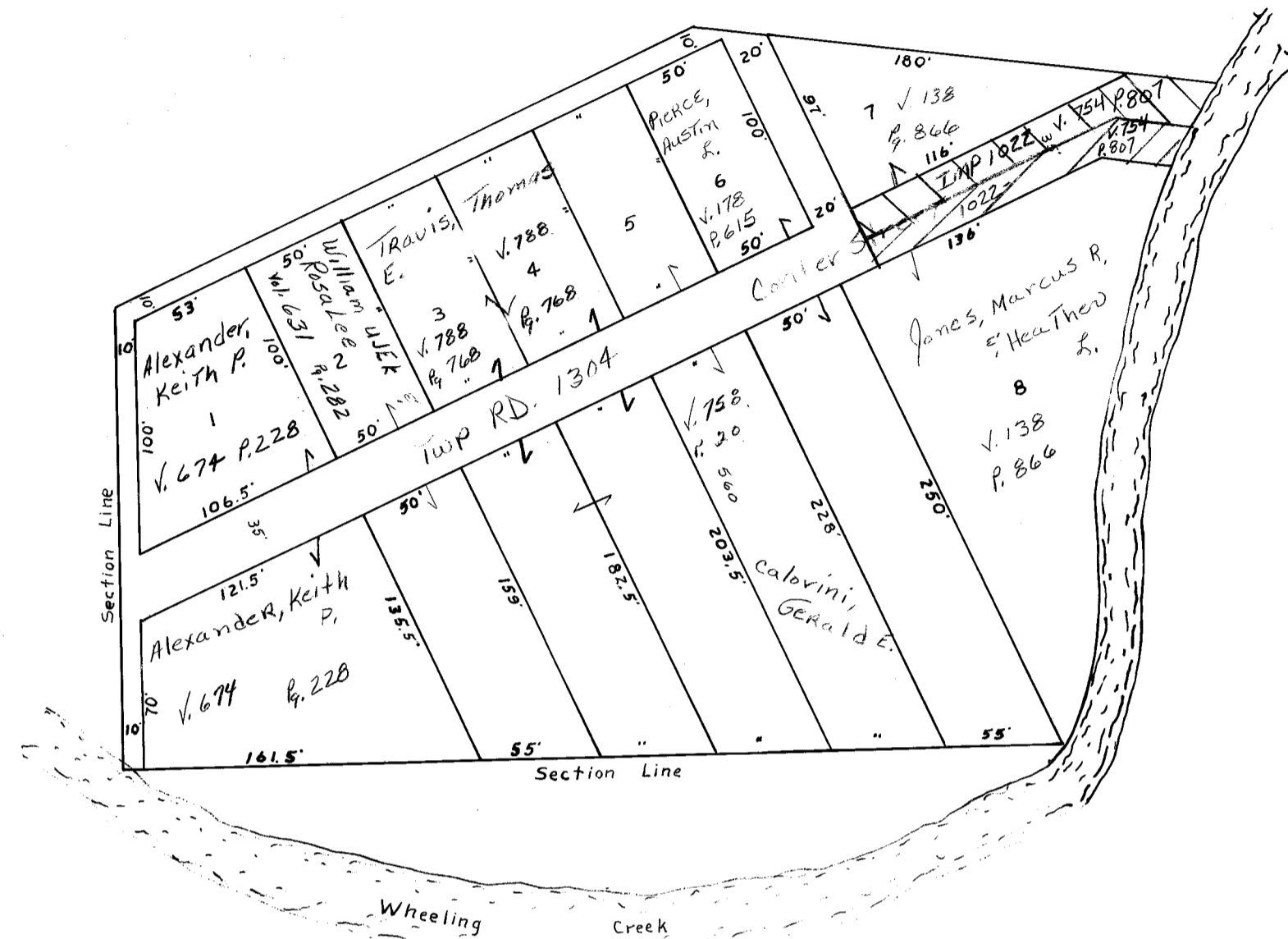
FRED F BENNETT COUNTY ENGINEER

CABINET B SLIDE 116

REVISED 1-2010

NO.	NAME	VOL.	PG.	ACRES

JORDEN'S 1st. ADD'N.



JORDEN'S 2nd. ADD'N.

UNION TOWNSHIP
BELMONT COUNTY, OHIO 1970

Sec. 6, T. 8, R. 5

SCALE 1" = 50'

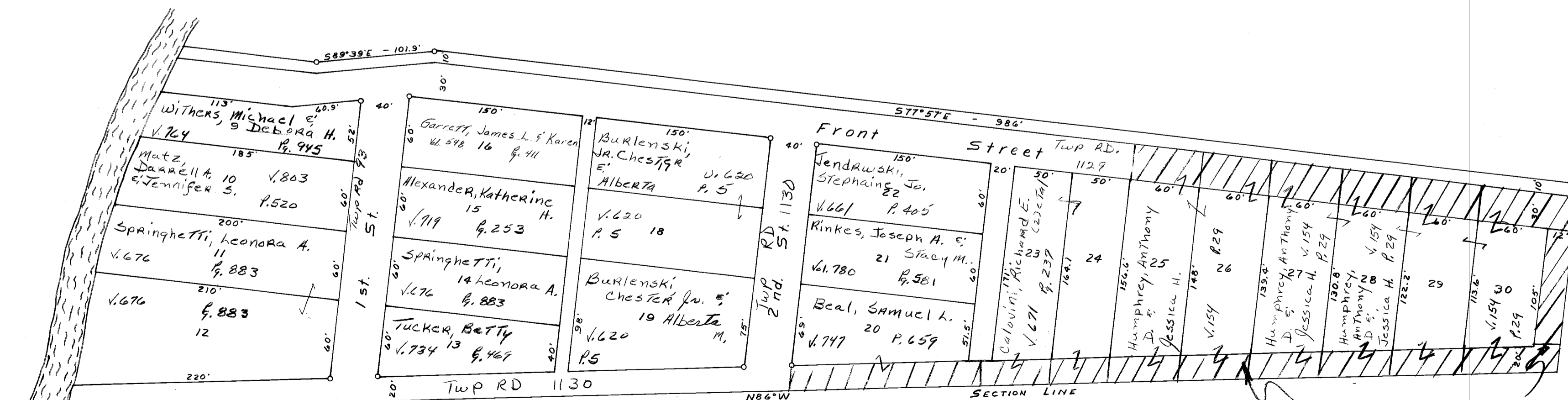
FRED F BENNETT COUNTY ENGINEER

CABINET B SLIDE 119

REVISED 12-2008 14-2009

NO.	NAME	VOL.	PG.	ACRES

JORDEN'S 2nd. ADD'N.



FOR ALLEY VACATION
SEE IMP. # 989
V. 705 P. 843
Rd. Rec. 15