

# JOSIE'S PANORAMIC ACRES

43

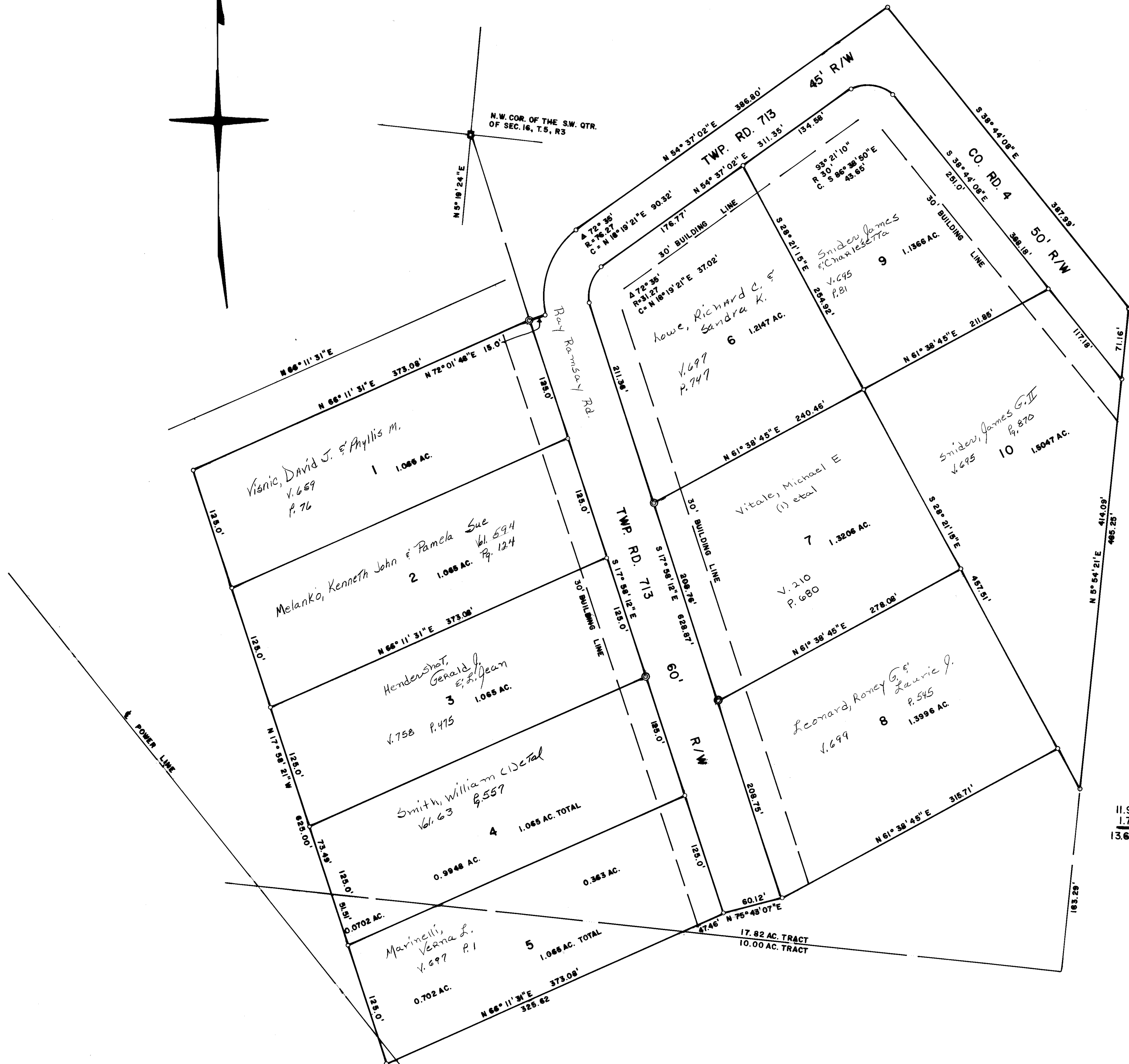
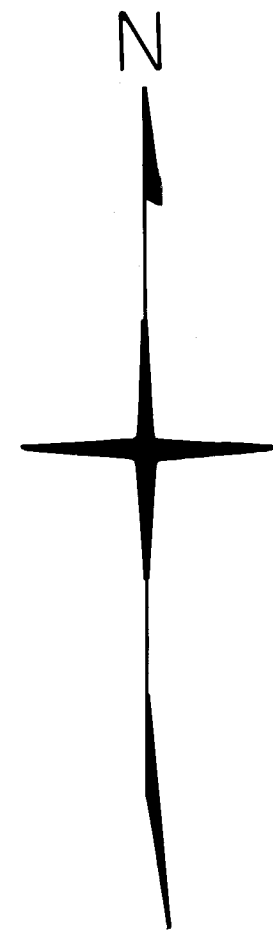
PULTNEY TOWNSHIP  
BELMONT COUNTY, OHIO 1980

Sec. 16, T. 5, R. 3



CABINET D SLIDE 301

REVISED



11.9012 AC. IN LOTS  
1.7592 AC. IN ROADS  
13.6604 TOTAL

NOTE: ACREAGE BREAKDOWN  
17.82 AC. TRACT  
12.8882 AC. - 0.7722 AC.  
4.9318 AC. BAL. 9.2278 AC. BAL.

12.8882 AC.  
0.7722 AC.  
13.6604 AC. TOTAL