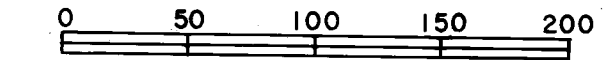


# PLAT OF MERRITT ESTATES

PULTNEY TOWNSHIP  
BELMONT COUNTY, OHIO 1979

SEC. 4, T.5, R.3

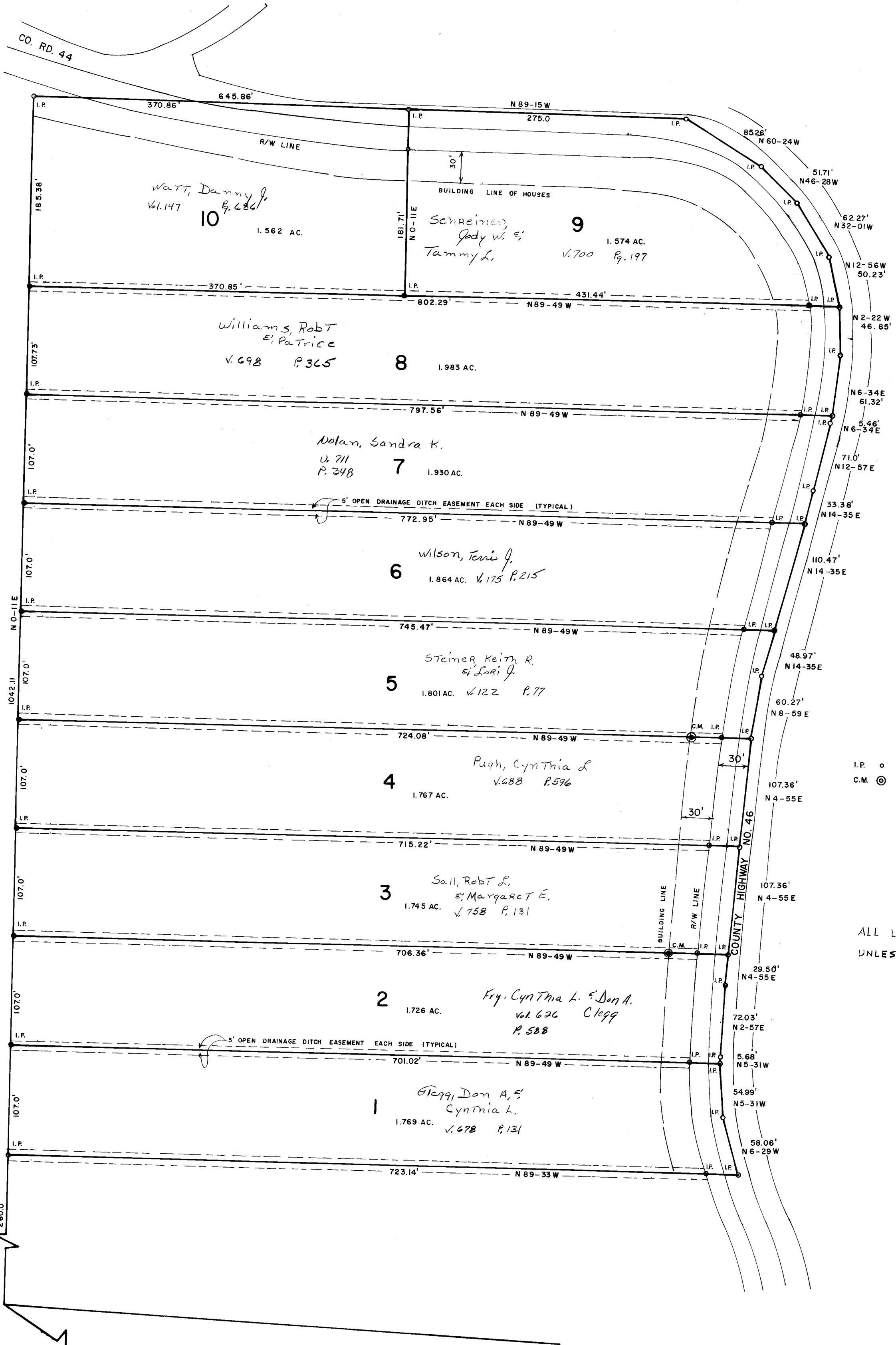
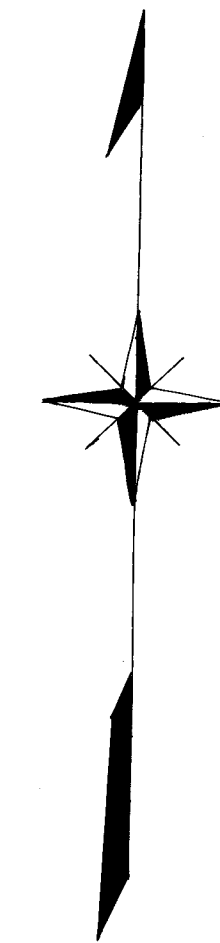
SCALE



FRED F. BENNETT COUNTY ENGINEER

CAB. D SLIDE 257

REVISED					



LEGEND  
 I.P. ○ DENOTES IRON PIN  
 C.M. ⊙ DENOTES CONCRETE MONUMENT

ALL LOTS OWNED BY KINDLE, MARY  
 UNLESS OTHERWISE SHOWN V. 577 P. 66

2801.36'  
 N 53-23 W  
 S.E. COR. OF SW 1/4  
 SEC. 4 T5 R3

ROLLING HILLS SUBDIVISION