

Sec. 11, T. 5, R. 3
Sec. 10, T. 5, R. 3

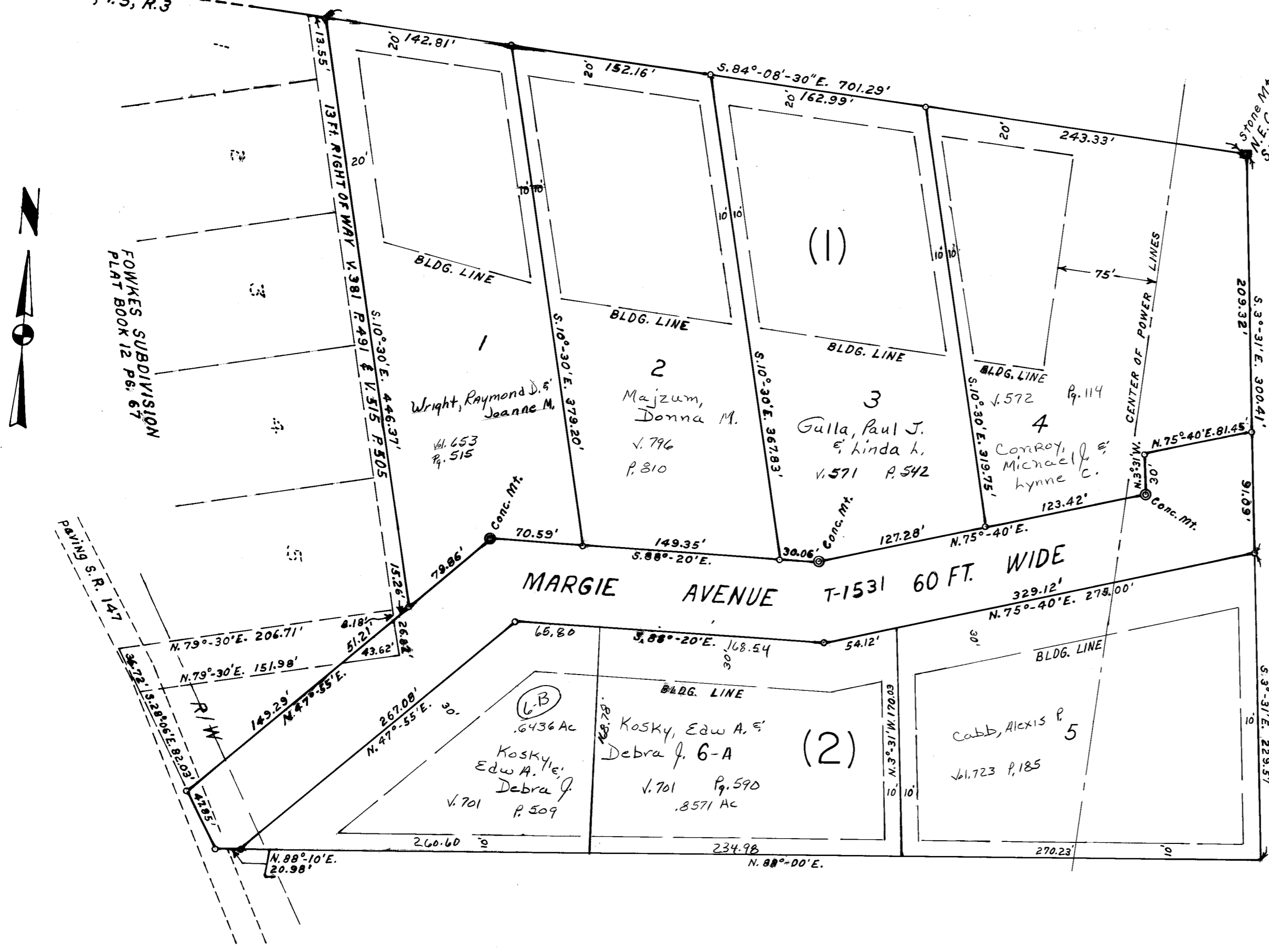
1 - KOLAKOWSKI'S ROLLING MEADOWS
PULTNEY TOWNSHIP, BELMONT COUNTY, OHIO
SECTION 10 TOWNSHIP 5 RANGE 3



| | Cab. D | Slide. 89 |
|--------------------------------|--------|-------------|
| ACREAGE IN MARGIE AVENUE | | 1.205 ACRES |
| ACREAGE IN 13 FT. RIGHT-OF-WAY | | 0.135 ACRES |
| ACREAGE IN LOTS 1, 2, 3, 4 | | 5.107 ACRES |
| TOTAL ACREAGE | | 6.447 ACRES |

All Lots owned by Joseph L. & Shirley A. Kolakowski
unless otherwise shown 525-40
570-16

| | | | | | |
|---------|--|--|--|--|--|
| REVISED | | | | | |
|---------|--|--|--|--|--|



2 - KOLAKOWSKI'S ROLLING MEADOWS 1ST. ADDITION
PULTNEY TOWNSHIP, BELMONT COUNTY, OHIO
SECTION 10 TOWNSHIP 5 RANGE 3



| | CABINET C | SLIDE 399 |
|-----------------------|-----------|--------------|
| ACREAGE IN LOTS 5 & 6 | | 2.7382 ACRES |

All Lots owned by Joseph L. & Shirley A. Kolakowski
unless otherwise shown 525-40
570-16

| | | | | | |
|---------|--|--|--|--|--|
| REVISED | | | | | |
|---------|--|--|--|--|--|