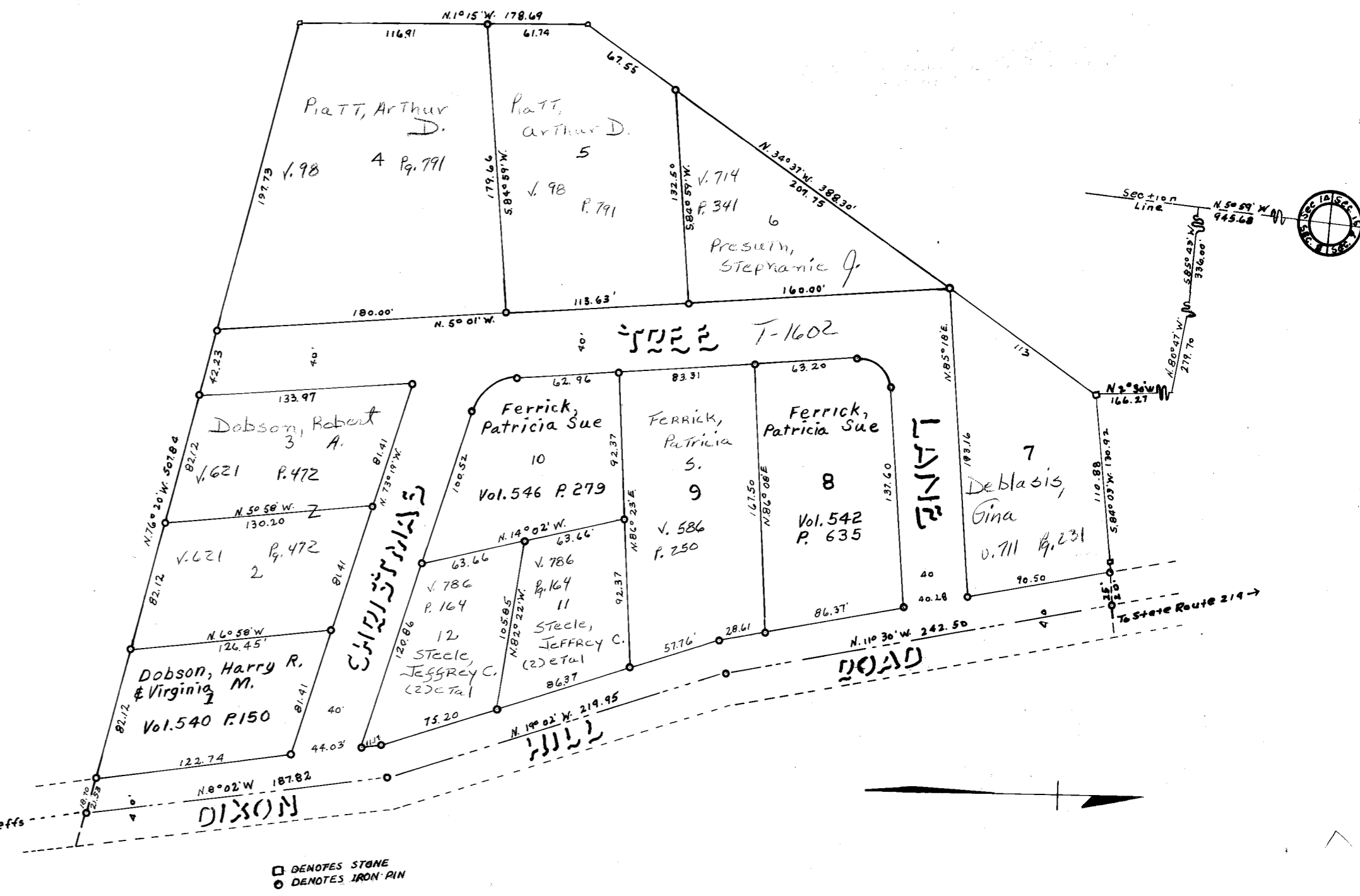
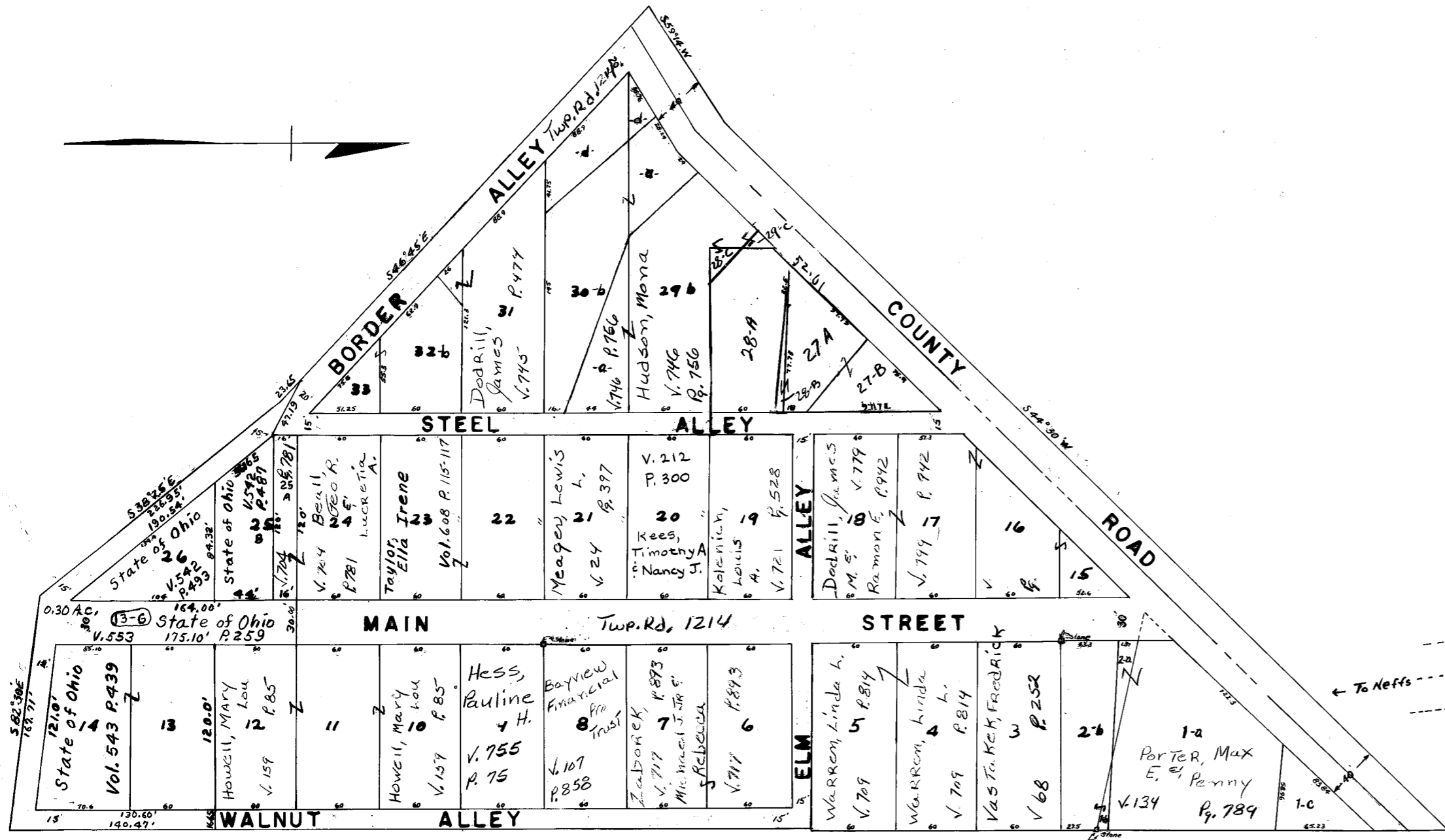


PLAT OF ST. JOSEPH
 PULTNEY TOWNSHIP
 SEC. 12 T. 5, R. 3
 BELMONT COUNTY, OHIO
 Cob. B Slide. II
 SCALE 1" = 60'

PANORAMA HEIGHTS
 PULTNEY TOWNSHIP
 SEC. 8 T. 6, R. 3
 BELMONT COUNTY, OHIO
 Cob. A Slide. 185
 SCALE 1" = 50'



REVISED 2-2011

LOT	NAME	Vol.	Pg.
1-C	Porter, Max E. & Penny	134	787
29-C	Kinders, Ethel F.	667	111
32-C	Matham, Paul D. & Cathy A.	707	585
33	do	709	585
1-b	Vasatack, Frederick L.	68	252
2-b	do	68	252
27	Curman, John Jack & Betty	603	211
27A	do	603	211
28B	Curman, John Jack & Betty	603	211
30-B	Vitale, Samuel R.	771	110
29-A	do	771	110
30-D	do	771	110
29-D	Vitale, Samuel R.	771	110
28-A	Curman, John Jack et al	720	250, 1550