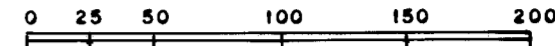


# ROLLING HILLS SUBDIVISION

PULTNEY TOWNSHIP  
BELMONT COUNTY, OHIO 1976

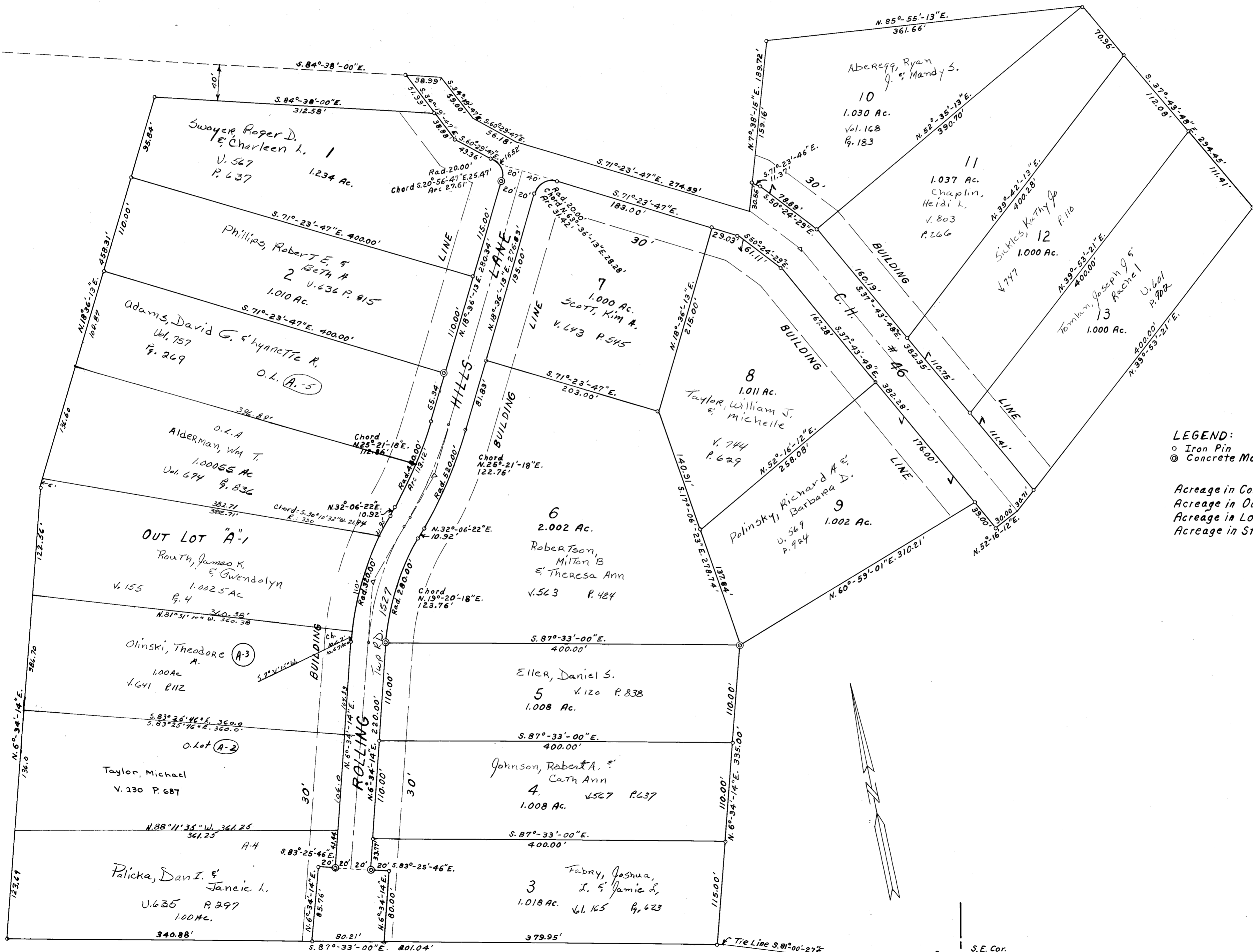
Sec. 4, T. 5, R. 3

SCALE IN FEET



Ceb. D Slide. 70-71

REVISED	2-2011			
---------	--------	--	--	--



**LEGEND:**  
 ○ Iron Pin  
 ⊙ Concrete Monument

Acreage in County Highway	0.911 Ac.
Acreage in Out-Lot	6.016 Ac.
Acreage in Lots	14.360 Ac.
Acreage in Streets	0.892 Ac.
<b>Total</b>	<b>22.179 Acres</b>