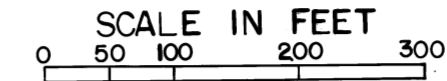


# WILLOWBROOKE ADDITION

PEASE TWP., Sec.9 T.6 R.3  
 PULTNEY TWP., Sec.8 T.6 R.3

BELMONT COUNTY, OHIO 1987

Cab. D Slide. 349



FRED F. BENNETT COUNTY ENGINEER

## LANSING COMMONS

LOTS 1-4  
 CAB E SLIDE 24

AND

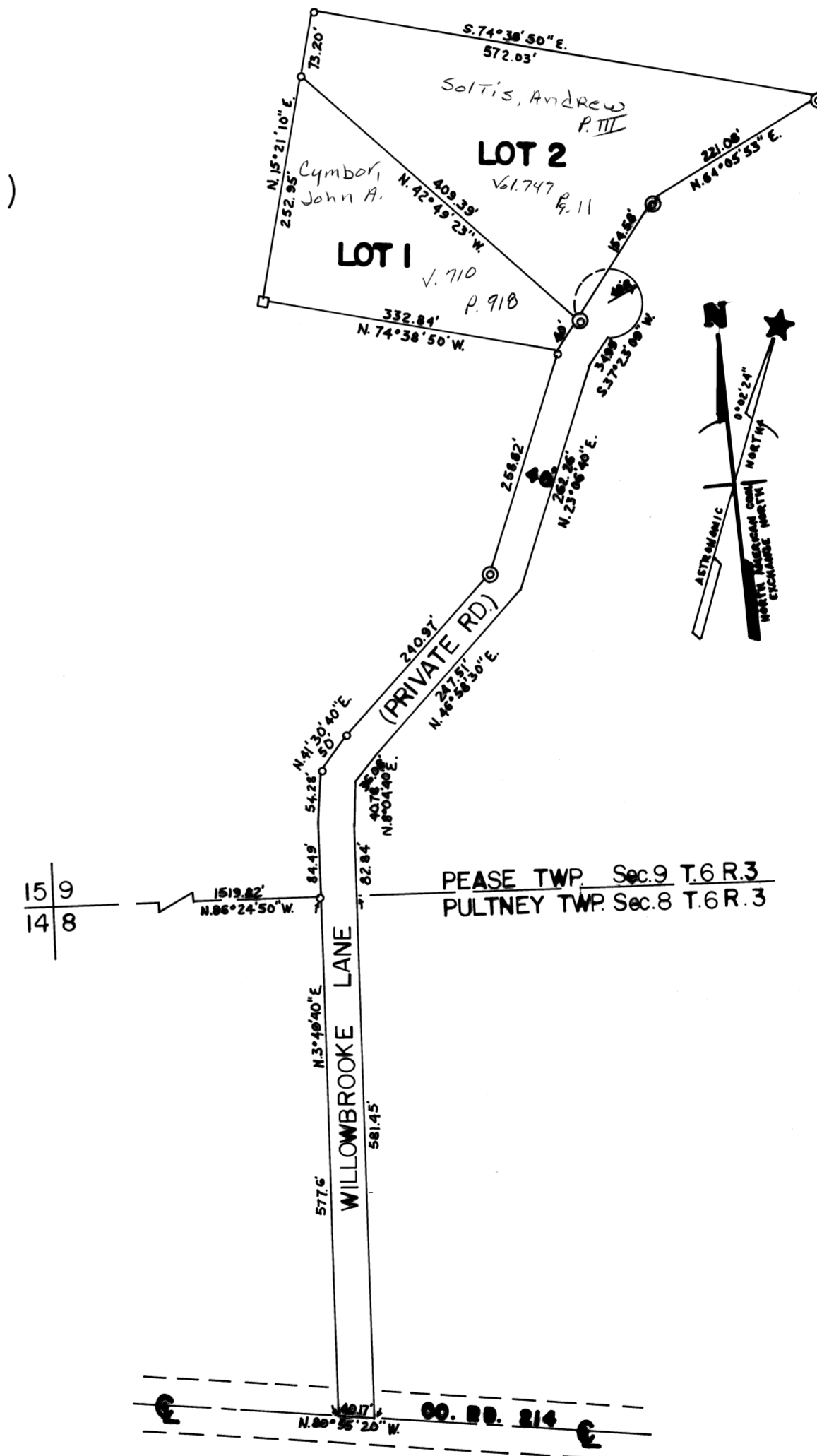
LANSING COMMONS 2nd  
 (LOTS 5-9)

PEASE TOWNSHIP  
 SEC. 4, T-6, R-3

BELMONT CO., OHIO

CAB E SLIDE 51

FRED F. BENNETT, CO. ENG.



REVISED 8-10

NO	NAME	VOL	PG	AC.

