

① FRONTIERSMEN'S VIEW ESTATES

PEASE TOWNSHIP
BELMONT COUNTY, OHIO 1987

Sec. 21 T. 4 R. 2

SCALE 1" = 50'
FRED F BENNETT COUNTY ENGINEER
Cab. C SL. 160

REVISED	8-10			
---------	------	--	--	--

NO	NAME	VOL	PG	AC.

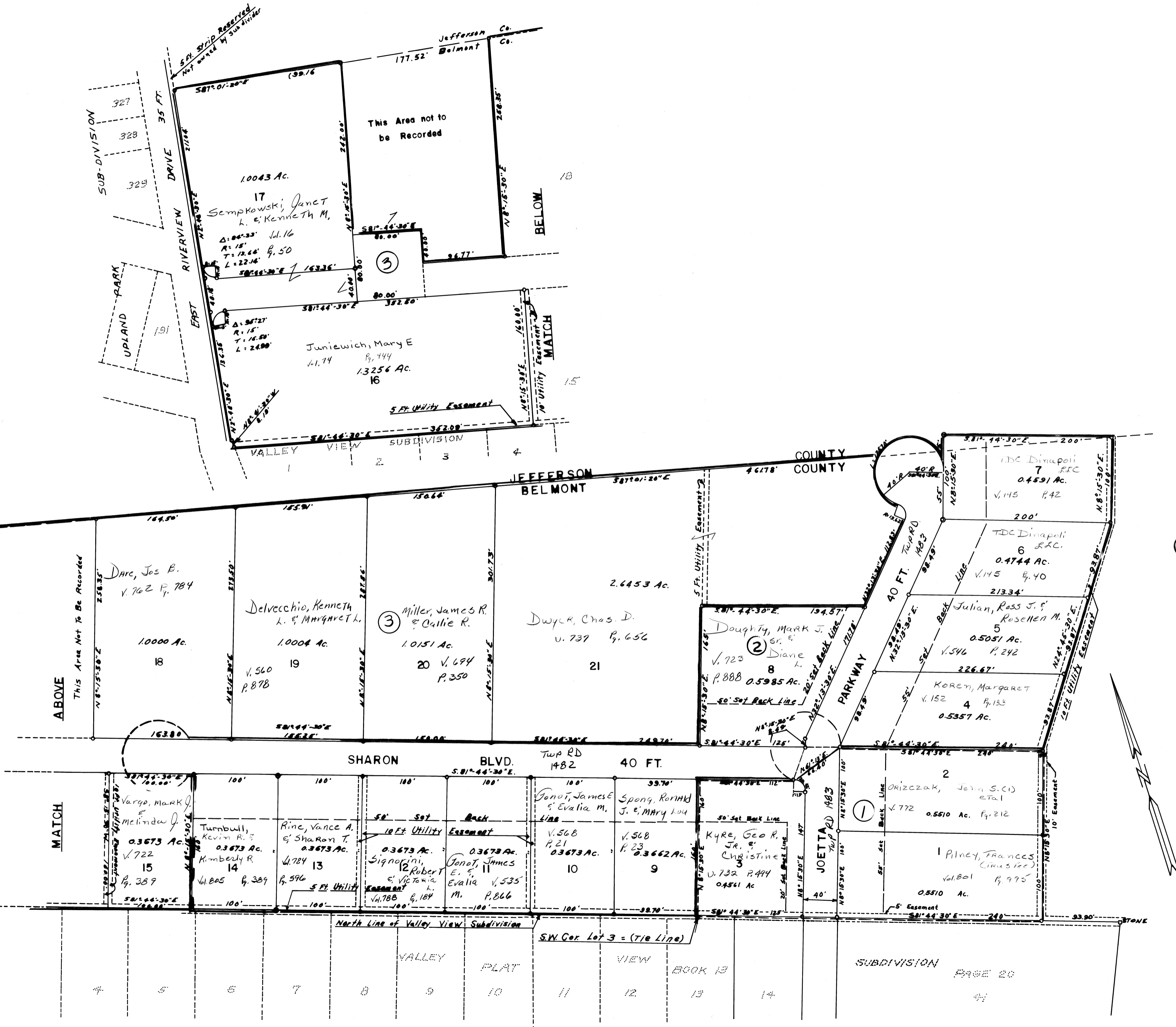
② FIRST ADDITION TO FRONTIERSMEN'S VIEW ESTATES

Cab. A SL. 86

For correction of 1st Add'n see
CAB E SL. 26

③ SECOND ADDITION TO FRONTIERSMEN'S VIEW ESTATES

Cab. A SL. 119



North Line of Valley View Subdivision
SW Cor. Lot 3 = (Tie Line)
VALLEY PLAT VIEW BOOK 12
SUBDIVISION PAGE 20