

GLENEYRE

PEASE TOWNSHIP

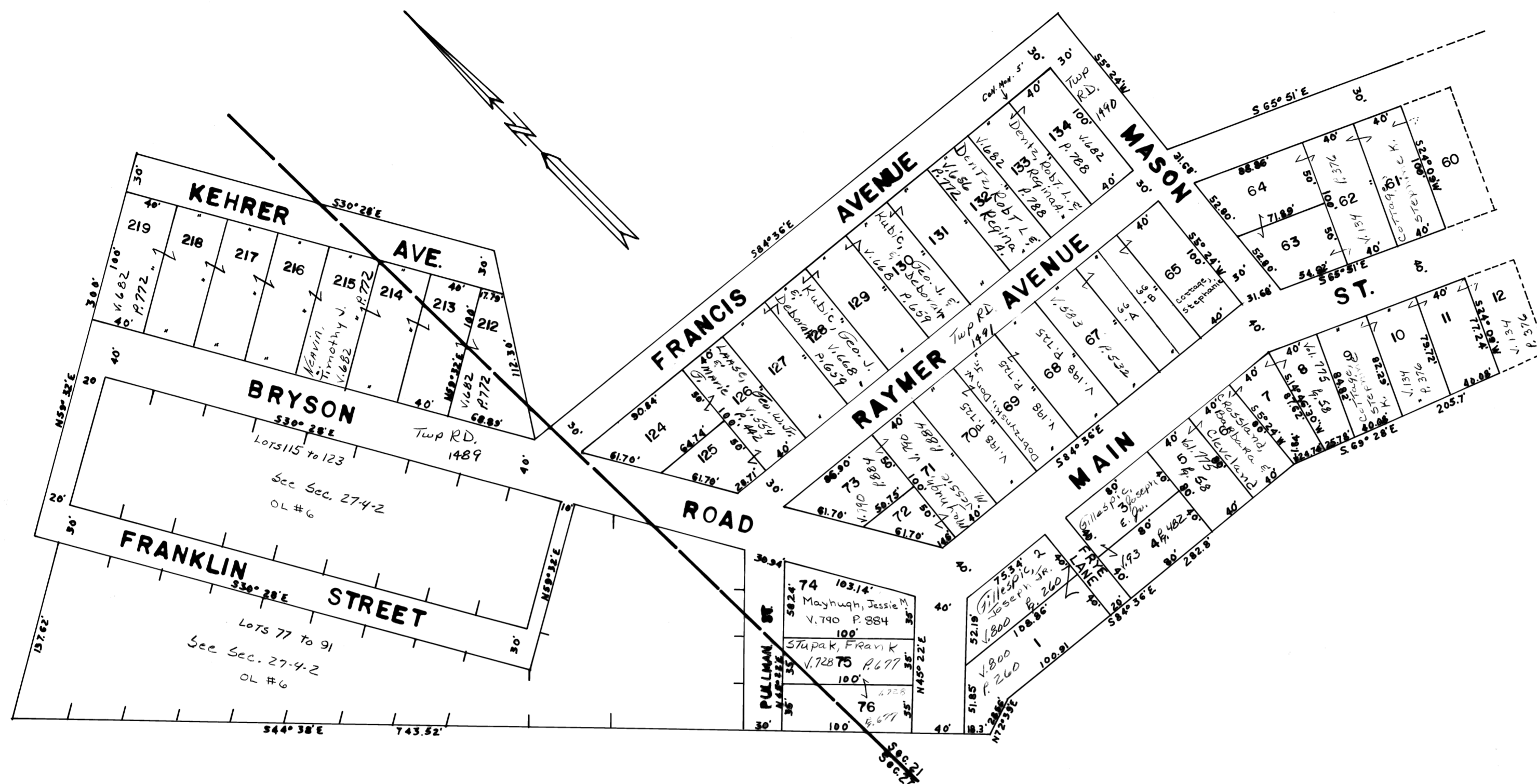
BELMONT COUNTY, OHIO 1987

Sec. 21 T.4 R.2 & Sec 27 T-4 R-2

SCALE 1" = 50'

FRED F. BENNETT COUNTY ENGINEER

Cab. D SL. 46 & 47

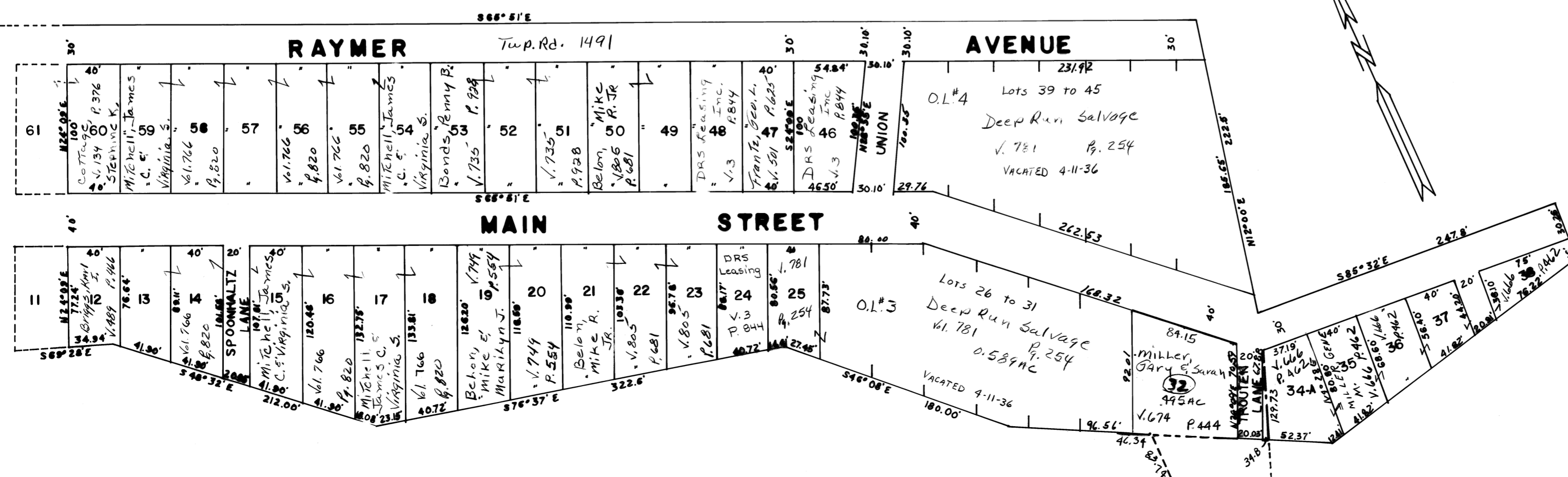


Record Of Plats, Vol.7 Pg.16 Shows Lots No.26 to 31 Inclusive & 39 to 45 Inclusive Were Vacated Feb.9,1935

Legal Notice Given For The Vacation Of Lots No.77 to 91 Inclusive & 115 to 123 Inclusive In "The Daily Times" For 2 Consecutive Weeks Aug.15,1936

Vacated Lots Are Carried As Out Lots So That The Acreage May Be Identified As Part Of GLENEYRE

REVISED 7-2010



NO	NAME	VOL	PG	AC.
34-B	Miller, Gary & Sarah	674	444	.0148

Tract 33 Eliminate