

LONG ACRES

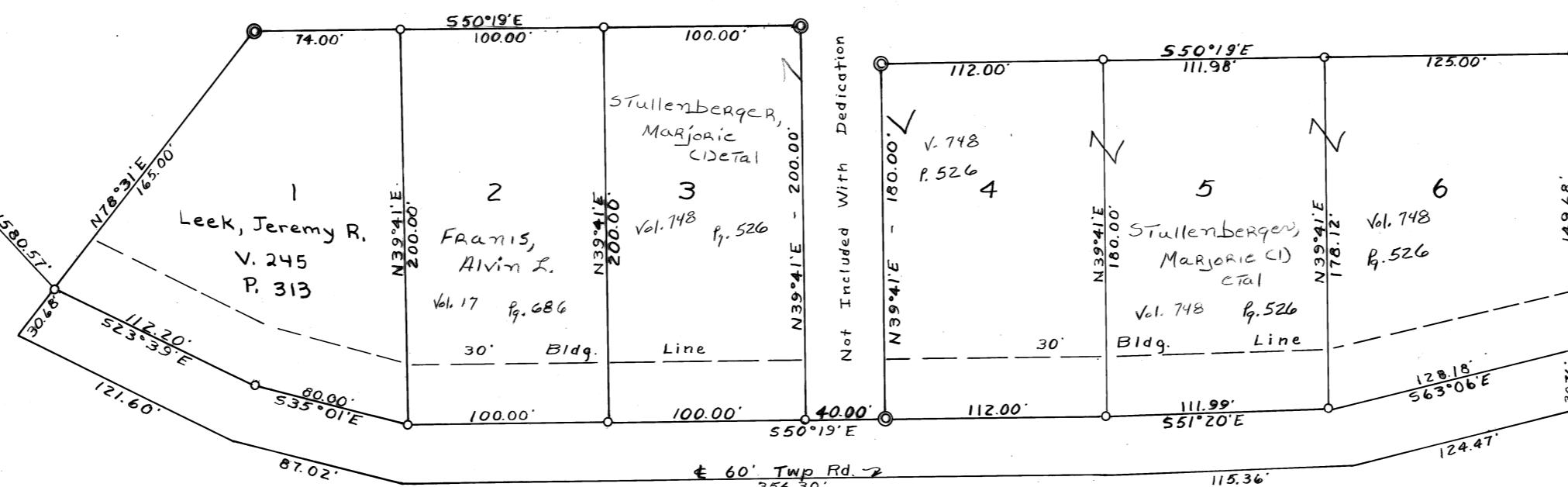
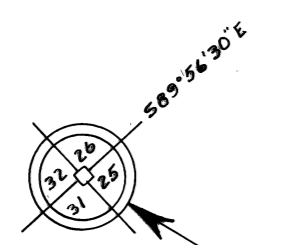
FLUSHING TOWNSHIP
BELMONT COUNTY, OHIO 1971

Sec.25,T.10,R.6

SCALE 1" = 50'

FRED F BENNETT COUNTY ENGINEER
Cab. B Slide. 293

REVISED 11-2010



Area In Lots 2.848 Ac.
Area In Road .547 Ac.

GLI

FLUSHING TOWNSHIP
BELMONT COUNTY, OHIO 1971

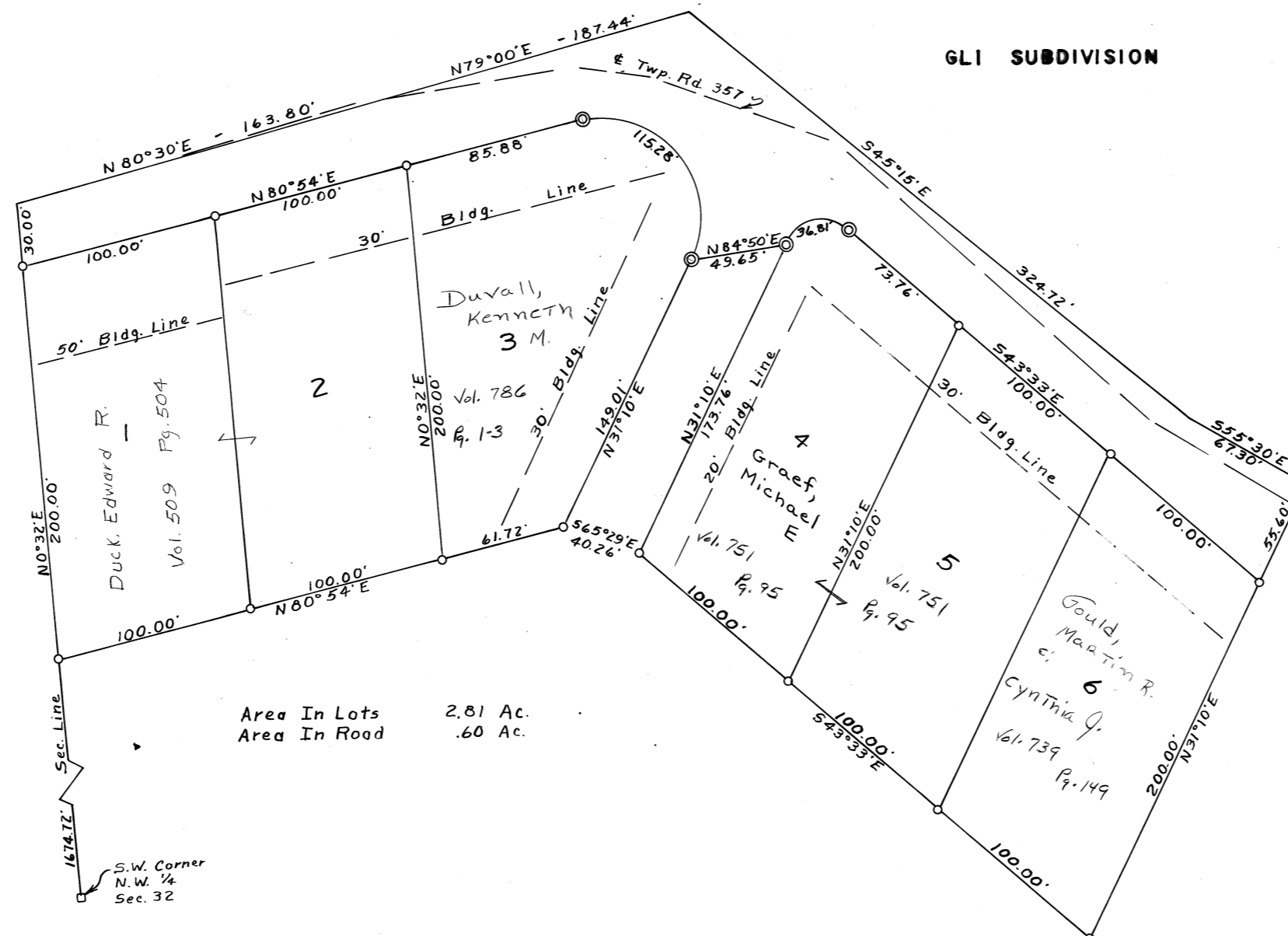
Sec.32,T.10,R.6

SCALE 1" = 50'

FRED F BENNETT COUNTY ENGINEER
Cab. C Slide. 380

REVISED 11-2010

GLI SUBDIVISION



Area In Lots 2.81 Ac.
Area In Road .60 Ac.

S.W. Corner
N.W. 1/4
Sec. 32