

STOFFER PROPERTY SUBDIVISION

COLERAIN TOWNSHIP SEC. 19, T.7, R.3

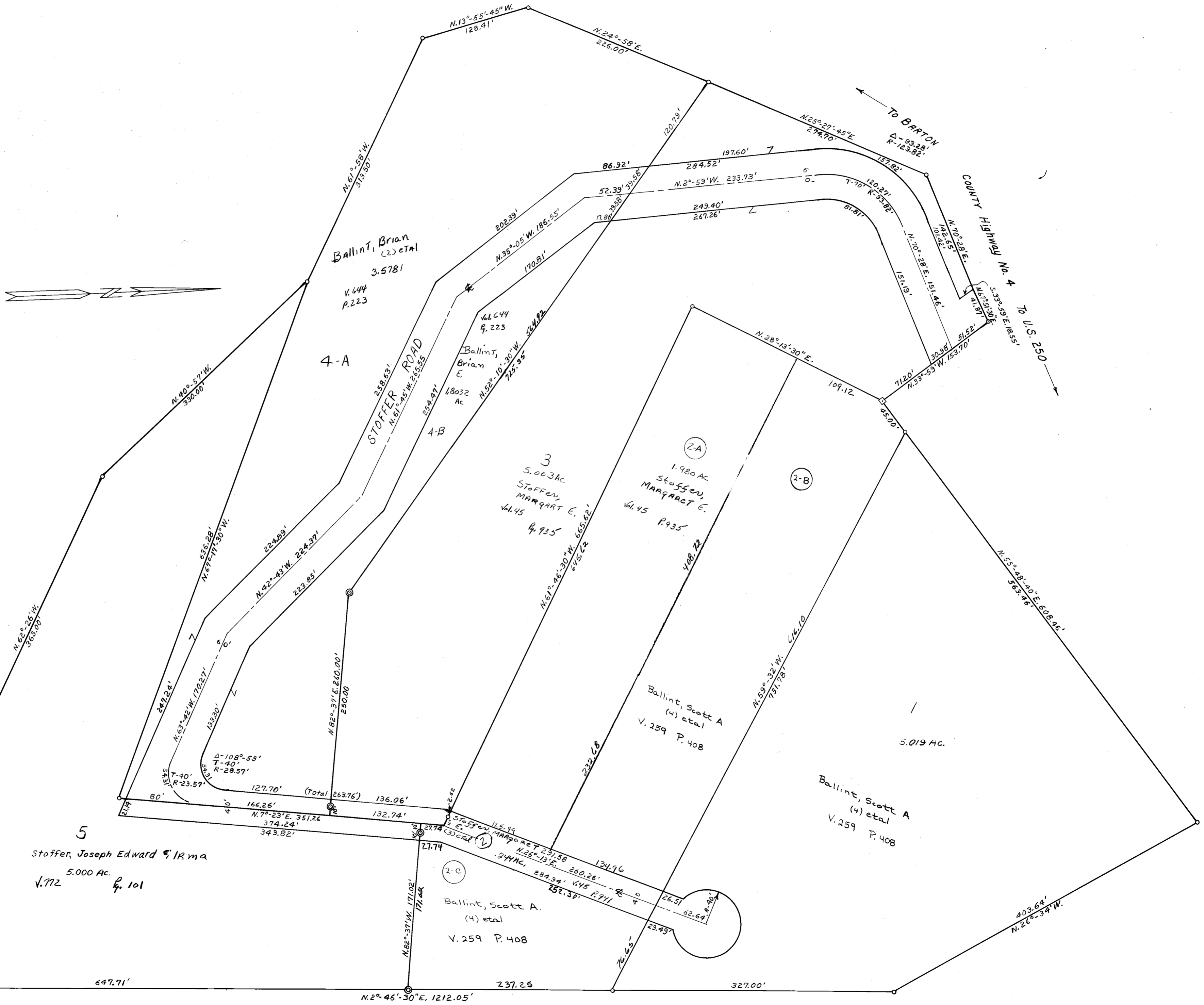
BELMONT COUNTY, OHIO 1972

SCALE 1" = 50'

FRED F BENNETT COUNTY ENGINEER

Ca b. C Slide. 107 & 108

REVISED 2-2011



223.91
 N. 86° 57' W. 1372.32'
 S.E. Corner - N.E. 1/4
 Sec. 19, T.7, R.3
 SECTION LINE
 N. 2° 42' 20" E.