

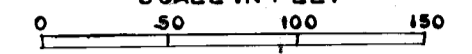
# SUNNY LANE

COLERAIN TOWNSHIP

BELMONT COUNTY, OHIO 1971

Sec. 20, T. 7, R. 3

SCALE IN FEET



FRED F. BENNETT COUNTY ENGINEER

Cab. C Slide 64

REVISED	2-2011			
---------	--------	--	--	--

# SUNNY LANE

1<sup>st</sup> ADD

PLAT BOOK 15 PG 3  
Cab. D Slide 64

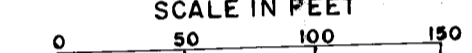
# L. L. MERCER

COLERAIN TOWNSHIP

BELMONT COUNTY, OHIO 1972

Sec. 21, T. 7, R. 3

SCALE IN FEET



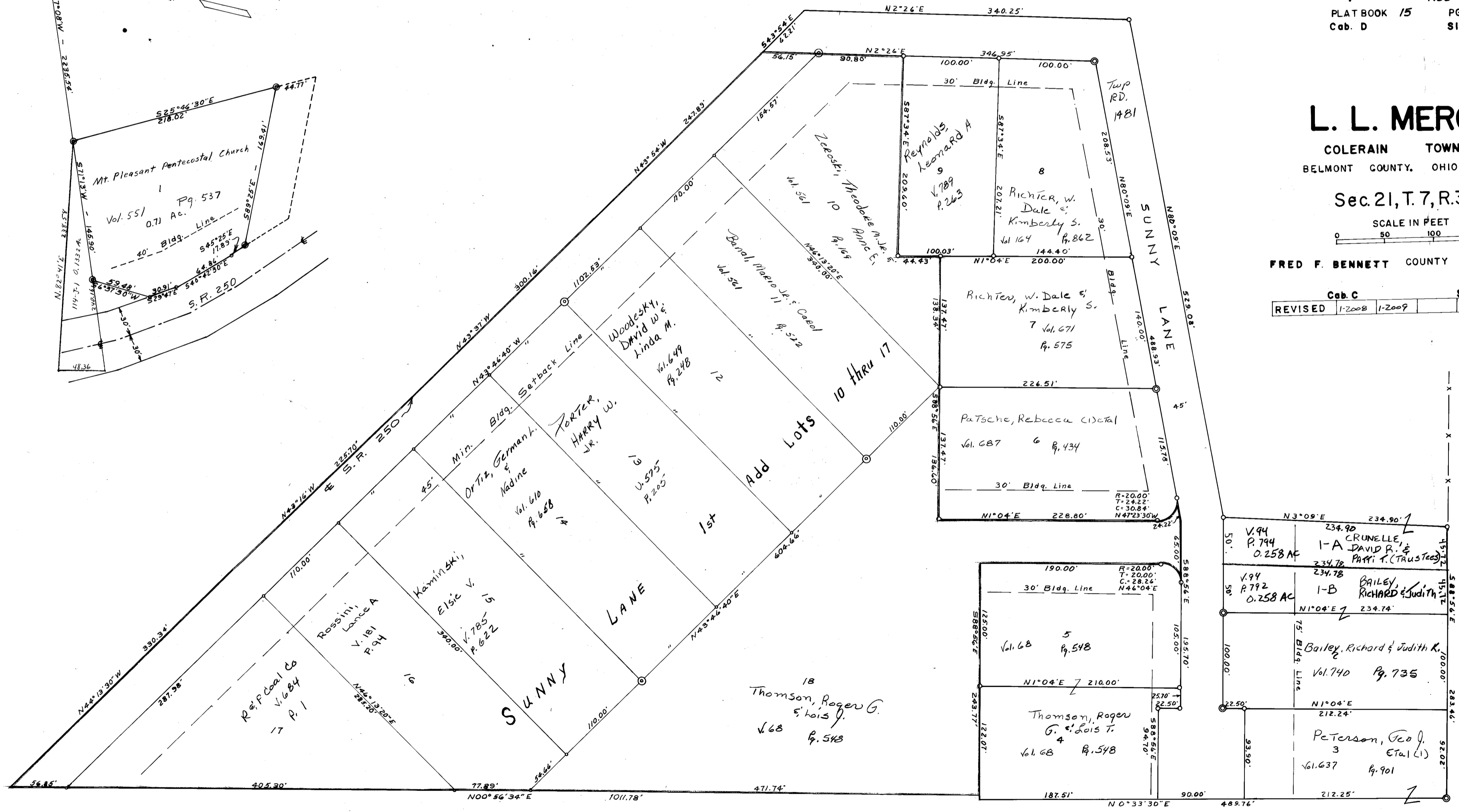
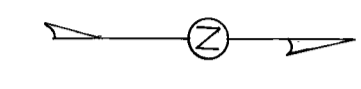
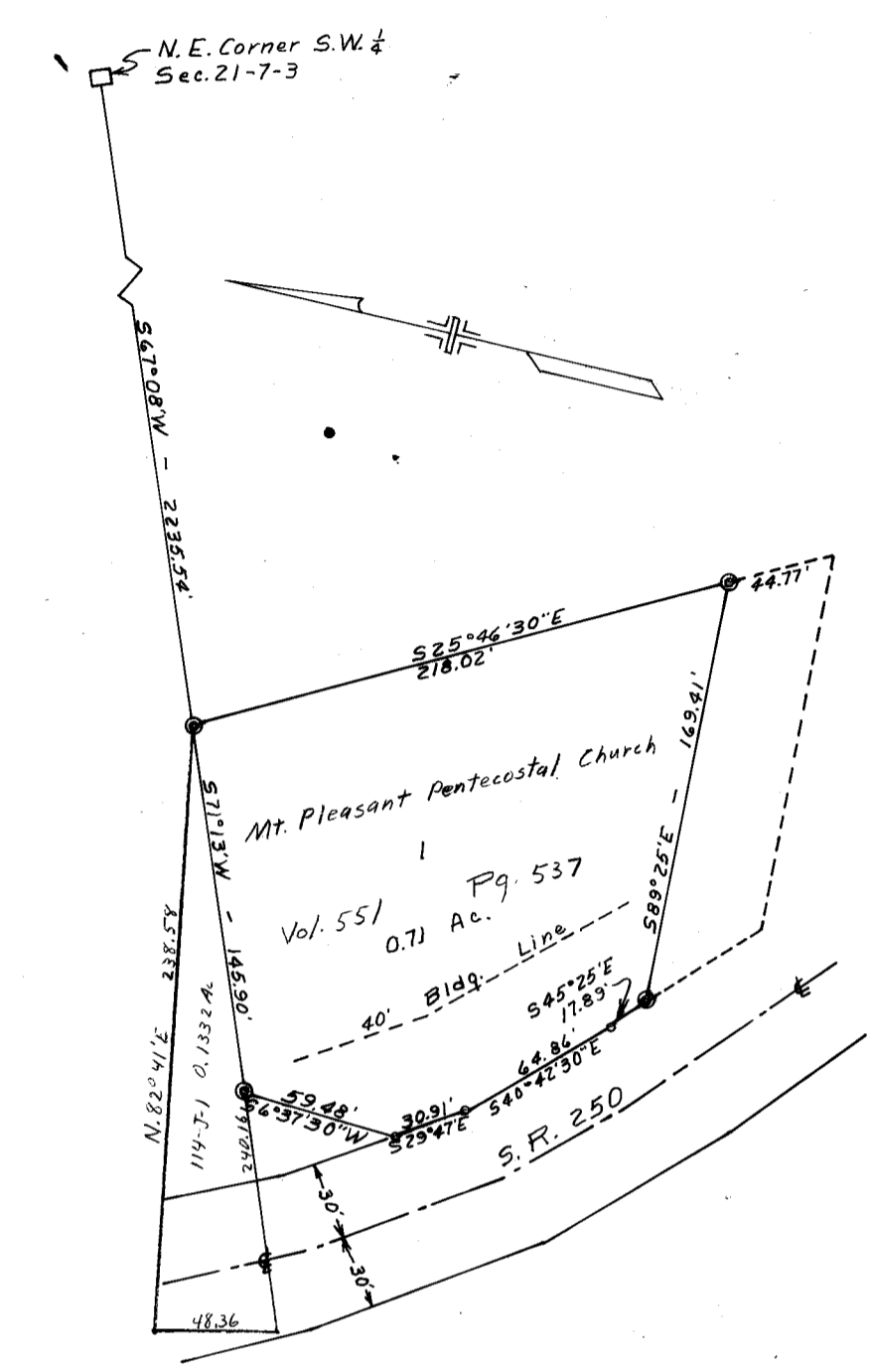
FRED F. BENNETT COUNTY ENGINEER

Cab. C Slide 330

REVISED	1-2008	1-2009		
---------	--------	--------	--	--

L. L. MERCER

SUNNY LANE



SUNNY LANE - 1<sup>st</sup> Add'n.  
 Area in Lots 9.583 Ac.  
 Area in Roads 1.036 Ac.  
 Total 10.619 Ac.

SUNNY LANE  
 Area in Lots 5.14 Ac.  
 Area in Roads 1.26 Ac.  
 Total 6.40 Ac.

Sec. 21