

# CLEARVIEW ACRES

COLERAIN TOWNSHIP SEC. 10 T. 6 R. 3  
SCALE: 1"=50' NOV., 1961

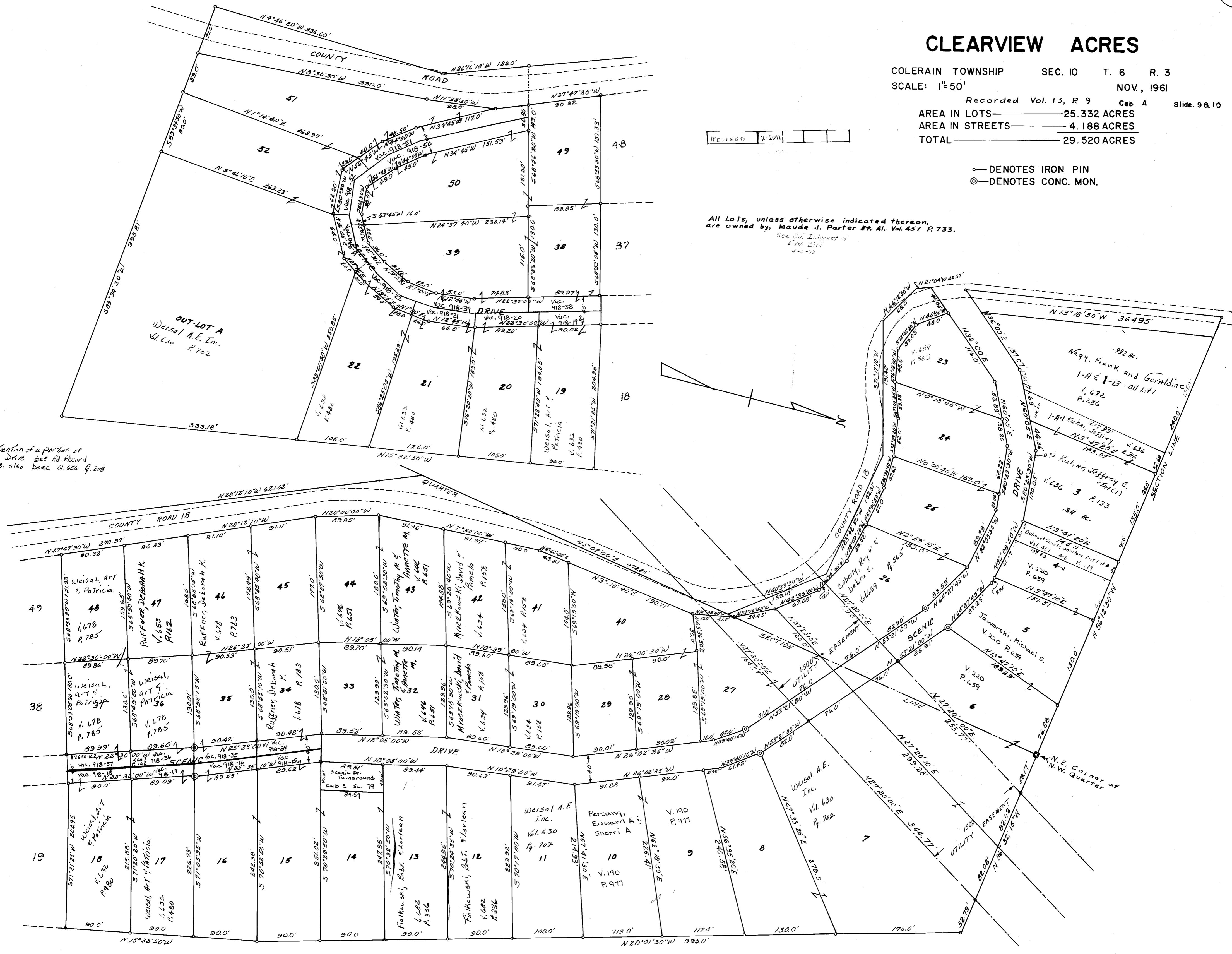
Recorded Vol. 13, P 9 Ceb. A Slide 98 10  
AREA IN LOTS 25.332 ACRES  
AREA IN STREETS 4.188 ACRES  
TOTAL 29.520 ACRES

○ DENOTES IRON PIN  
◎ DENOTES CONC. MON.

REVISED 2-2011

All Lots, unless otherwise indicated thereon,  
are owned by, Maude J. Porter Et. Al. Vol. 457 P. 733.  
See C.T. Interest of  
E.W. Zini  
4-6-78

For location of a portion of  
Scenic Drive see R.R. Record  
of #918, also Deed Vol. 656 P. 208



OUT-LOT A  
Weisal A.E. Inc.  
Vol. 630 P. 702

392 Ac.  
Nagy, Frank and Geraldine  
1-A & 1-B = all Lot 1  
Vol. 672 P. 286

217.93 Ac.  
Kuhar, Jeffrey C.  
Vol. 636 P. 133

34 Ac.  
Jaworski, Michael S.  
Vol. 220 P. 659

151.51 Ac.  
Weisal A.E. Inc.  
Vol. 630 P. 702

1000 Ac.  
Persang, Edward A.  
Vol. 190 P. 977

113.0 Ac.  
Weisal A.E. Inc.  
Vol. 630 P. 702

117.0 Ac.  
Weisal A.E. Inc.  
Vol. 630 P. 702