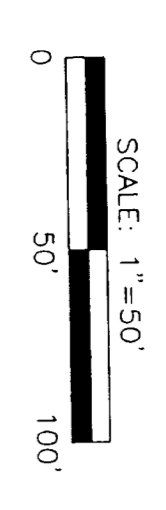


CABINET E, SLIDE 266  
**SPACE VIEW RIDGE 10TH ALLOTMENT**

THE BEARINGS ARE BASED UPON THE BEARING SYSTEM USED ON THE PLAT OF SPACE VIEW RIDGE FOURTH ALLOTMENT AS BEING THE IN CABINET B, SLIDE 249, THE BELMONT COUNTY PLAT RECORDS.



JESSIE MAE POLLOCK  
 VOL. 580, PG. 524  
 40.330 ACRES

KIRK B. PORTERFIELD  
 VOL. 585, PG. 347  
 30.00 ACRES

TOWNSHIP OF RICHLAND  
 COUNTY OF BELMONT  
 STATE OF OHIO  
 SECTION 10  
 TOWNSHIP 7  
 RANGE 4

COUNTY AUDITOR  
 TRANSFERRED BY BELMONT COUNTY AUDITOR  
 DATE 8-8-01  
 RECEIVED FOR RECORD  
 IN BELMONT COUNTY RECORD OF PLATS  
 CABINET E, SLIDE 266  
 FEE PAID \$ 1.00

COUNTY RECORDER  
 RECEIVED FOR RECORD  
 IN BELMONT COUNTY RECORD OF PLATS  
 CABINET E, SLIDE 266  
 FEE PAID \$ 1.00

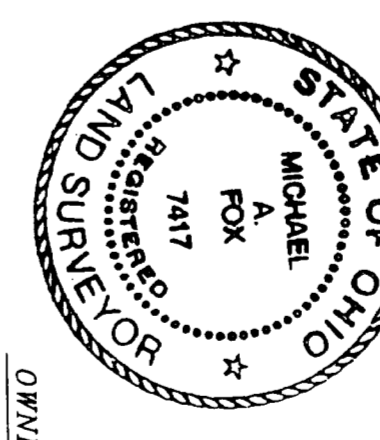
NO. 7167  
 RECEIVED FOR RECORD  
 IN BELMONT COUNTY RECORD OF PLATS  
 CABINET E, SLIDE 266  
 FEE PAID \$ 1.00

BY Joseph A. Pappano  
 BY David R. Koppelt  
 BY New Station Record by EXR

DATE 8-8-01  
 TIME 9:30 O'CLOCK AM

NOTE: ACREAGE BREAKDOWN

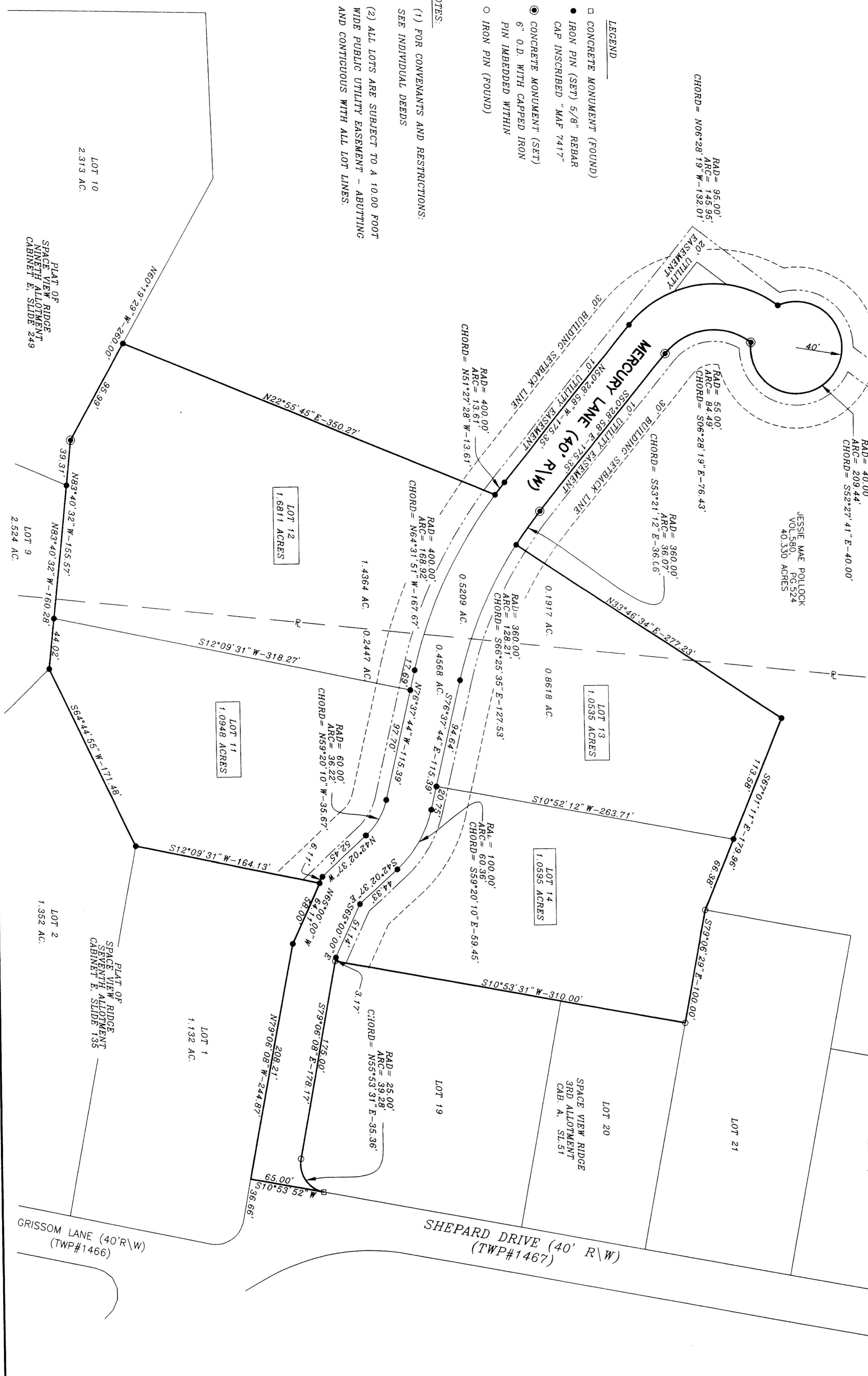
ACREAGE FROM 40.330 ACRES, DEED V.580, P.524	3.7177 ACRES
ACREAGE FROM 51.041 ACRES, DEED V.580, P.524	2.1490 ACRES
ACREAGE FROM 40.330 ACRES, DEED V.580, P.524	4.8890 ACRES
TOTAL ACREAGE IN LOTS	0.9777 ACRES
TOTAL ACREAGE IN ROADWAY	5.8867 ACRES
TOTAL PLAT ACREAGE	



I, HEREBY CERTIFY THAT THIS MAP IS TRUE AND CORRECT SURVEYED BY ME IN OCTOBER AND THAT ALL MONUMENTS ARE SET AS SHOWN.  
 MICHAEL FOX SURVEYOR NO. 7417

- LEGEND
- CONCRETE MONUMENT (FOUND)
  - IRON PIN (SET) 5/8" REBAR  
CAP INSCRIBED "MAP 7417"
  - CONCRETE MONUMENT (SET)  
6" O.D. WITH CAPPED IRON  
PIN IMBEDDED WITHIN
  - IRON PIN (FOUND)

NOTES:  
 (1) FOR CONVENANTS AND RESTRICTIONS:  
 SEE INDIVIDUAL DEEDS  
 (2) ALL LOTS ARE SUBJECT TO A 10.00 FOOT  
 WIDE PUBLIC UTILITY EASEMENT - ABUTTING  
 AND CONTIGUOUS WITH ALL LOT LINES.



STATE OF OHIO  
 BELMONT COUNTY SS:  
 BE IT REMEMBERED THAT ON THIS 8<sup>th</sup> DAY OF August, 2001, BEFORE ME THE UNDERSIGNED, A NOTARY PUBLIC IN AND FOR SAID COUNTY AND STATE, PERSONALLY CAME Jesse Mae Pollock, who acknowledged to me that she is the owner of the foregoing plat and that she is the same person who executed the foregoing deed and that the same was lawfully executed and that I have set my hand and notary seal on the day and date first above written.

NOTARY PUBLIC  
 My Commission Expires 04/13/06

COUNTY ENGINEER  
 APPROVED FOR RECORD  
 BELMONT COUNTY ENGINEER  
 DATE 8-8-01

COUNTY COMMISSIONERS:  
 APPROVED FOR RECORD SUBJECT TO THE RULES AND REGULATIONS GOVERNING THE PLATTING OF SUBDIVISIONS OF LAND.  
 BELMONT COUNTY COMMISSIONERS:  
 DATE 8-8-01

