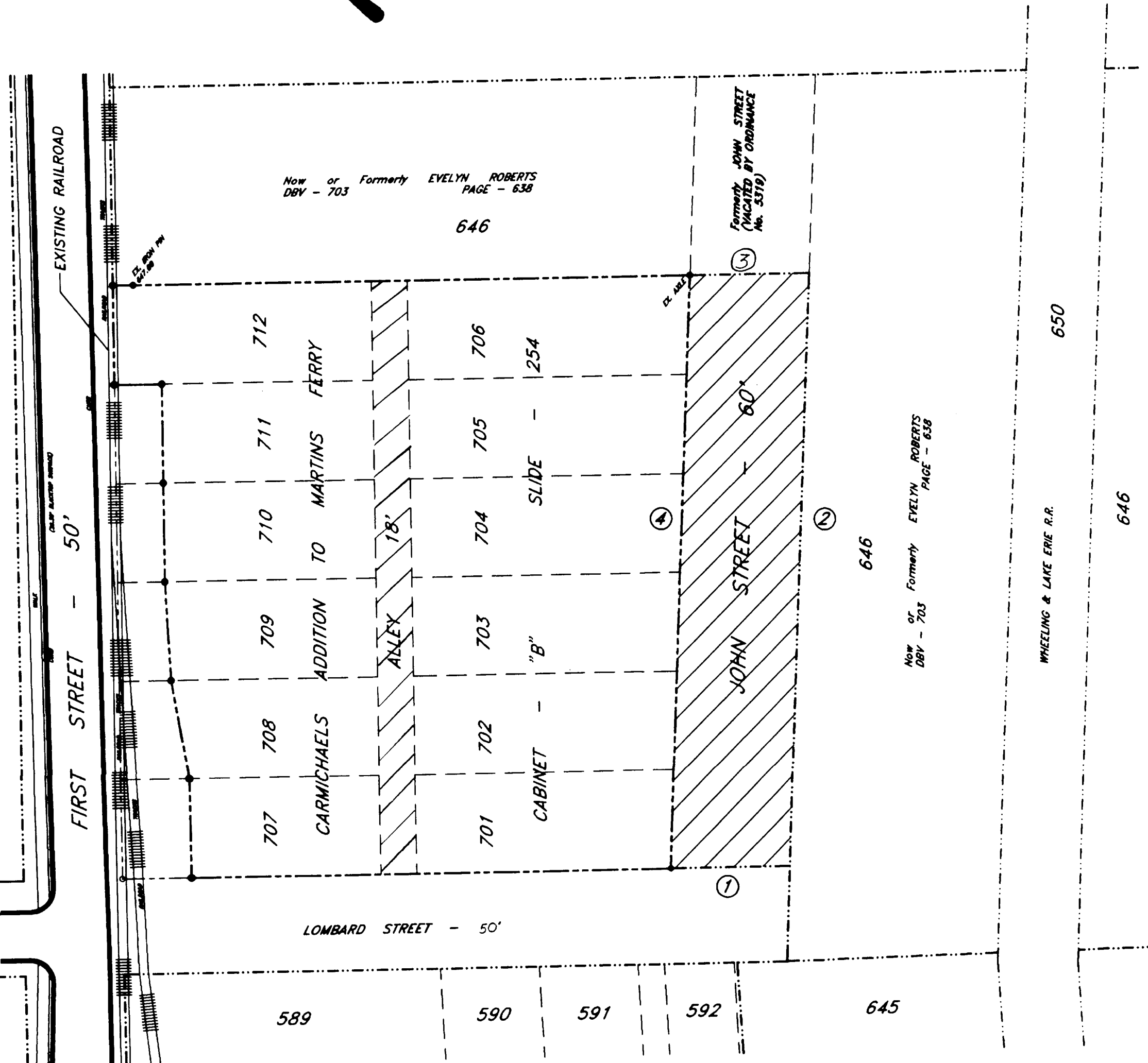
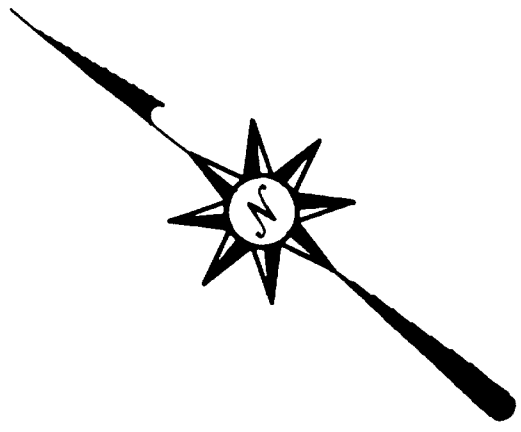


CITY OF MARTINS FERRY VACATION PLAT FOR A PORTION OF JOHN STREET AND AN 18' ALLEY



- ① S 40°00'00" E - 60.00 FT.
- ② N 52°48'05" E - 300.36 FT.
- ③ N 40°00'00" W - 60.00 FT.
- ④ S 52°48'00" W - 300.36 FT.

JOHN STREET TO BE VACATED
300.36' x 60.00' = 18,021.60 SQ.FT.

18" ALLEY TO BE VACATED
300.00' x 18.00' = 5,400.00 SQ.FT.

CERTIFICATION

I HEREBY CERTIFY THAT THIS PLAT WAS PREPARED FOR ME FROM THE BELMONT COUNTY PLAT RECORDS AND IN ACCORDANCE WITH THE O.R.C. SECTION 711.39 & 723.04.

William W. Street
SURVEYOR P.S.



COUNTY ENGINEER

ACCEPTED FOR RECORD
THIS 23RD DAY OF MARCH 2000

Paul F. Bennett, PE, PS
COUNTY ENGINEER

COUNTY AUDITOR

APPROVED BY COUNTY AUDITOR
FEE \$10.00 DATE 10:30:00

J. A. Pappano by Diane Appolloni
AUDITOR

COUNTY RECORDER

NO. 9579
RECEIVED FOR RECORD 10-30-00 1999 AT 11:00 AM
RECORDED 11-2, 2000, 1999
CABINET E, SLIDE 258
BELMONT COUNTY RECORD OF PLATS
FEE: \$ 44.00 - Pd.

Mary Catherine Nix by Dorothy L. Yousin
RECORDER

CITY OF MARTINS FERRY

PASSED BY ORDINANCE NO. 2000-19
THIS 17 DAY OF FEBRUARY 2000
& 6 DAY OF APRIL 2000

Lislie A. Douglas
PRESIDENT OF COUNCIL
Lloyd J. Shook
MAYOR

FOR ORDINANCE NO. 2000-19 SEE VOL. 762, P. 13
FOR ORDINANCE NO. 2000-30 SEE VOL. 762, P. 22
OF THE BELMONT COUNTY DEED RECORDS

SCALE

1" = 50'

