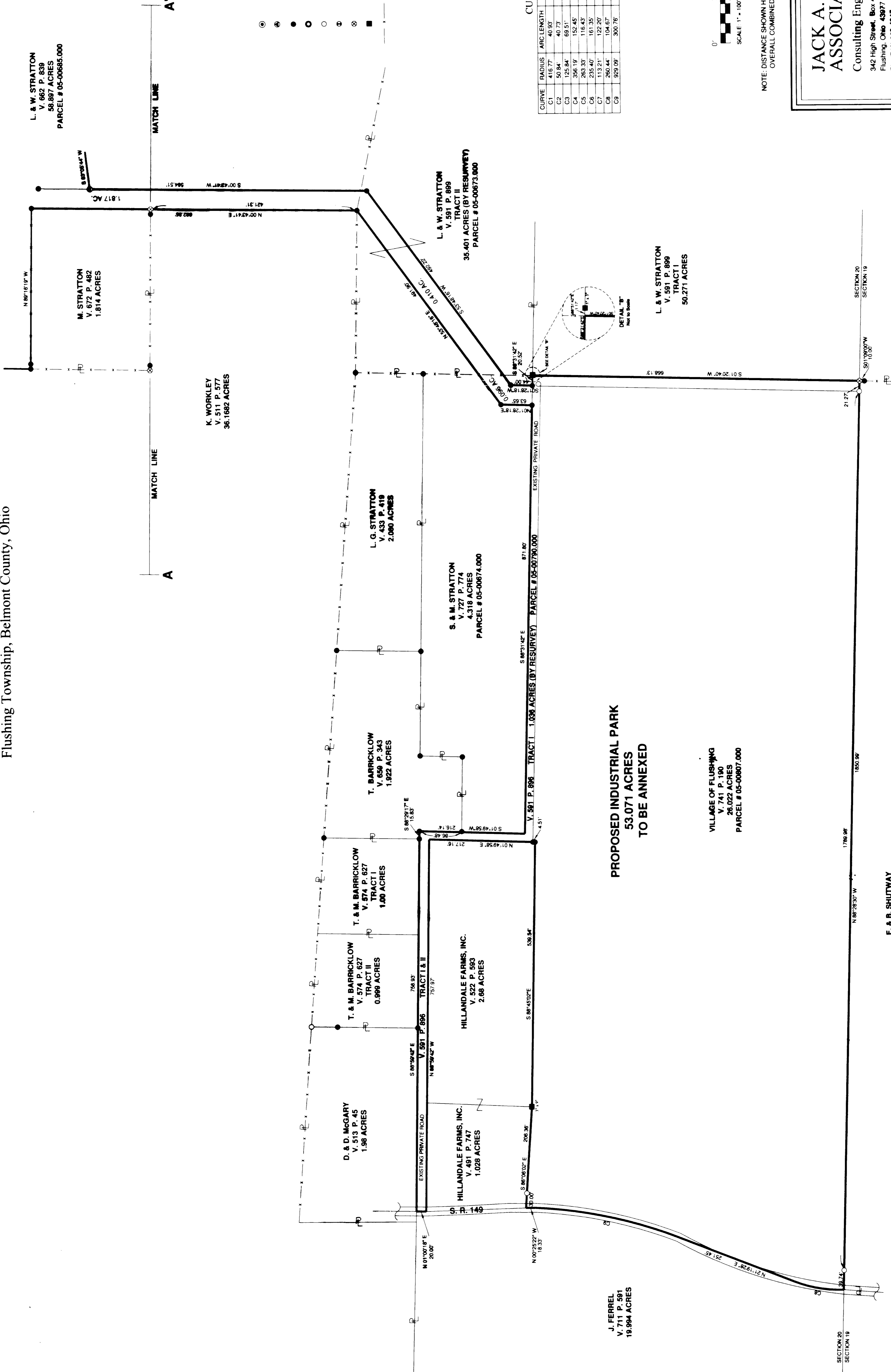


Village of Flushing Annexation (Industrial Park)

Sheet 3 of 3

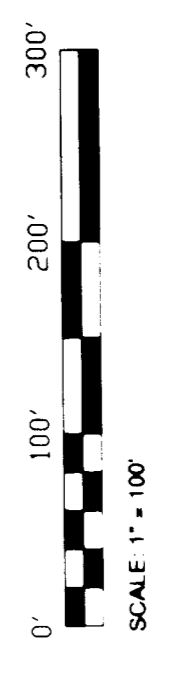
Section 20, Township 9 Range 5,
Flushing Township, Belmont County, Ohio

BASIS OF BEARINGS
BEARINGS ON THIS MAP REFER TO THE
NATIONAL GRID COORDINATE
SYSTEM (SOUTH ZONE) AS DETERMINED
BY SOLAR OBSERVATION.



CURVE TABLE

CURVE	RADIUS	ARC LENGTH	CHORD LENGTH	CHORD BEARING	CENTRAL ANGLE
C1	416.77	40.93	84.28	S 42°28'32" E	05°37'35"
C2	50.84	39.85	39.85	S 66°47'00" E	45°53'48"
C3	368.84	69.51	68.83	S 75°55'12" E	31°38'58"
C4	368.19	152.45	151.29	S 70°21'28" E	24°31'20"
C5	263.33	116.43	115.48	N 40°34'48" W	25°19'58"
C6	235.40	161.35	158.21	N 69°34'23" W	39°16'23"
C7	113.21	122.20	116.35	N 64°13'07" W	61°50'37"
C8	260.44	104.67	103.96	N 09°48'38" E	23°01'34"
C9	939.09	300.76	296.45	N 12°03'02" E	18°32'51"



NOTE: DISTANCE SHOWN HEREON ARE GRID DISTANCES BASED ON AN OVERALL COMBINED FACTOR OF 0.999885.

JACK A. HAMILTON & ASSOCIATES, INC.
Consulting Engineers & Surveyors
342 High Street, Box 471
Flushing, Ohio 43077
Ph: (740) 968-4947 Fax: (740) 968-4225
E-mail: hamilton@1st.net
Internet address: <http://users.1st.net/hamilt/>
Comm. # 430-2 Prepared by: PRH