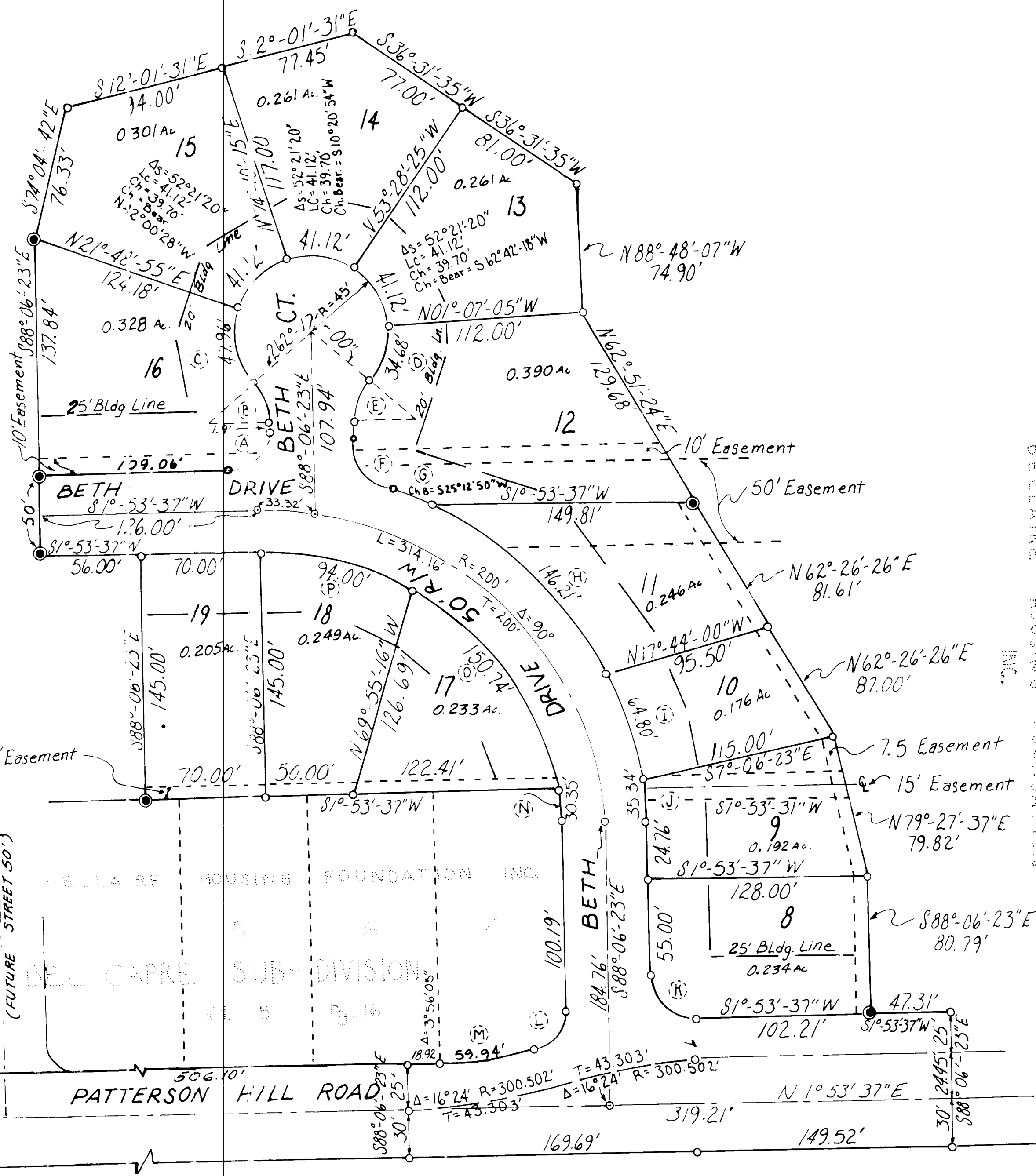
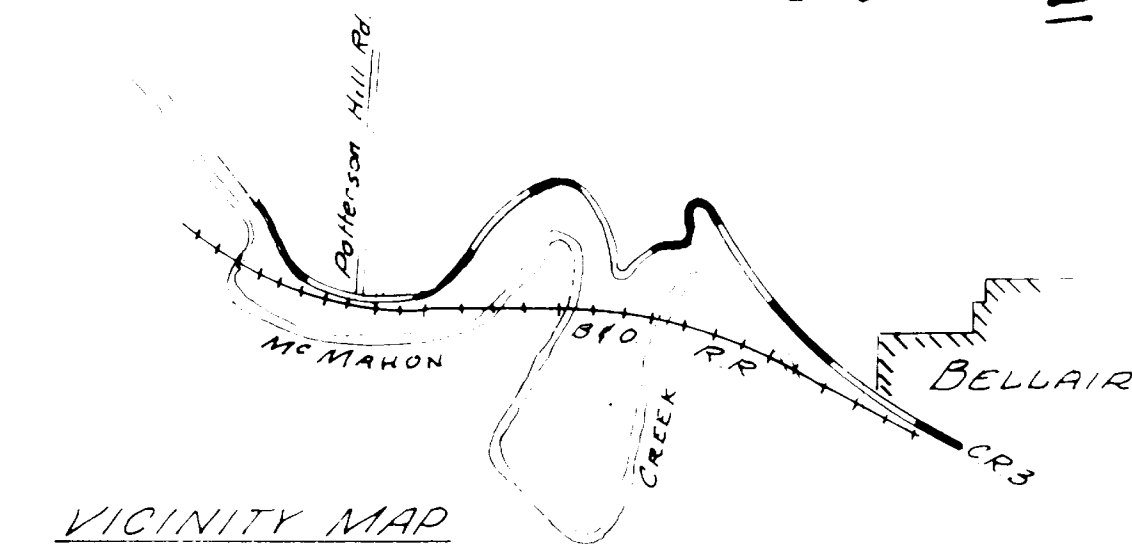


BEL CAPRE NO. 2

PULTNEY TOWNSHIP SECTION 6, T.5, R.3



Curve Data

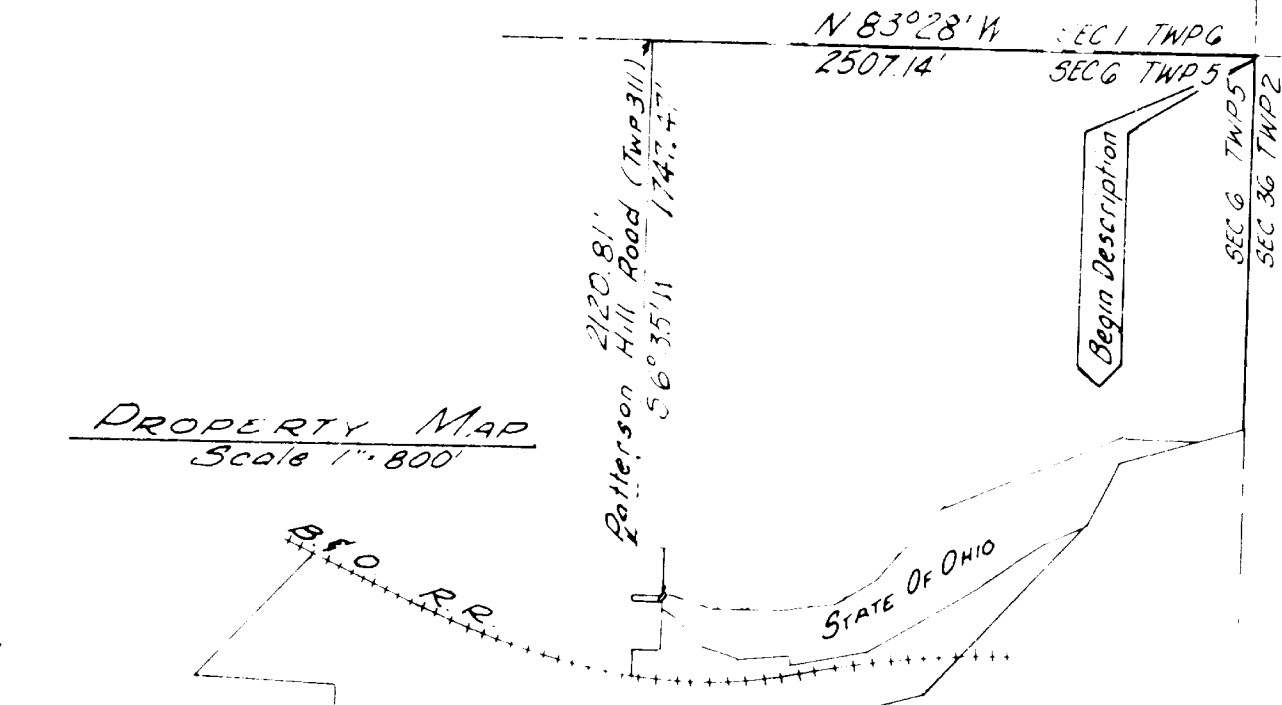
A	$\Delta = 90^\circ$
	$T = 25'$
	$R = 25'$
	$LC = 39.27'$
	$Ch = 35.355'$
B	$\Delta = 41^\circ 08' 30''$
	$R = 36'$
	$LC = 25.85'$
	$Ch = 25.30'$
C	$\Delta = 61^\circ 03' 48''$
	$R = 45'$
	$LC = 47.96'$
	$Ch = 45.72'$
D	$\Delta = 44^\circ 09' 12''$
	$R = 45'$
	$LC = 34.68'$
	$Ch = 33.85'$
E	$\Delta = 41^\circ 08' 30''$
	$R = 36'$
	$LC = 25.85'$
	$Ch = 25.30'$

Curve Data

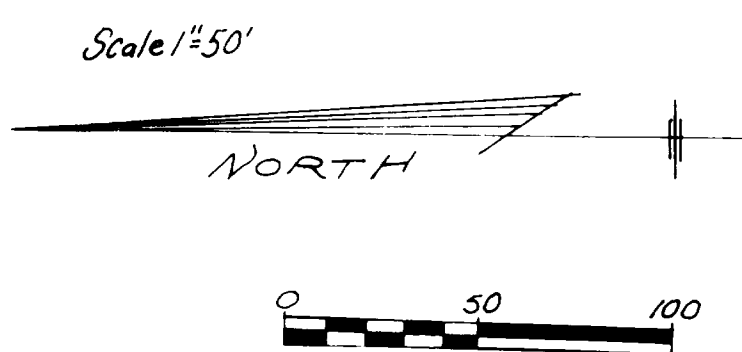
F	$\Delta = 70^\circ 35' 43''$
	$R = 25'$
	$LC = 30.80'$
	$Ch = 28.89'$
G	$\Delta = 7^\circ 49' 51''$
	$R = 22.5'$
	$LC = 30.75'$
	$Ch = 30.73'$
H	$\Delta = 37^\circ$
	$R = 22.5'$
	$LC = 146.21'$
	$Ch = 143.65'$
I	$\Delta = 16^\circ$
	$R = 22.5'$
	$LC = 64.80'$
	$Ch = 64.57'$
J	$\Delta = 9^\circ 0' 0''$
	$R = 22.5'$
	$LC = 150.74'$
	$Ch = 146.12'$

Curve Data

K	$\Delta = 90^\circ$
	$R = 25.79'$
	$T = 25.79'$
L	$\Delta = 81^\circ 48'$
	$R = 20'$
	$Ch = 26.19'$
	$T = 16.28'$
	$Ch B = 547^\circ 12' 22'' E$
M	$\Delta = 12^\circ 27' 55''$
	$R = 325.502'$
	$Ch = 59.82'$
	$Ch B = 3^\circ 18' 22'' E$
N	$\Delta = 9^\circ 52' 15''$
	$R = 175'$
	$LC = 30.35'$
O	$\Delta = 49^\circ 21' 11''$
	$R = 175'$
	$LC = 150.74'$
	$Ch = 146.12'$
P	$\Delta = 30^\circ 46' 34''$
	$R = 175'$
	$LC = 94'$
	$Ch = 92.81'$
	$Bear = S17^\circ 16' 54''$



Property Description	Orig. Survey Bearing	Distance
S 06° 13' 00" W		1551.00'
S 81° 00' 00" W		530.81'
N 31° 06' 00" W		264.00'
S 47° 21' 00" W		561.00'
S 49° 21' 00" W		470.23'
S 81° 21' 00" W		313.50'
S 88° 51' 00" W		825.00'
N 69° 39' 00" W		90.75'
S 06° 21' 00" W		829.95'
N 86° 39' 00" W		610.50'
N 79° 39' 00" W		631.95'
N 06° 45' 00" E		905.69'
N 82° 55' 00" W		593.55'
N 49° 4' 00" E		734.25'
S 59° 42' 00" E		314.74'
S 59° 50' 00" E		496.34'
S 60° 53' 00" E		100.00'
S 62° 59' 00" E		100.00'
S 65° 54' 00" E		100.00'
S 66° 51' 00" E		100.00'
S 71° 54' 00" E		100.00'
S 74° 54' 00" E		98.99'
N 06° 35' 00" E		49.50'
S 86° 54' 00" E		685.90'
N 83° 24' 00" E		201.11'
S 88° 45' 50" E		534.48'
N 09° 04' 21" E		30.00'
N 88° 45' 50" W		542.66'
S 84° 24' 00" W		200.00'
N 86° 51' 02" W		679.01'
N 06° 35' 00" E		50.46'
S 83° 25' 00" E		124.93'
N 06° 35' 00" E		200.00'
N 06° 25' 00" W		124.93'
N 06° 35' 00" E		20.00'
S 83° 25' 00" E		124.93'
N 06° 35' 00" E		200.00'
N 83° 25' 00" W		124.93'
N 06° 35' 00" E		2120.81'
S 83° 28' 00" E		2507.14'



Note Distances on curves are arc length measurements
 1" = 50'
 © Concrete Monument

The undersigned BELLAIRE HOUSING FOUNDATION INC., an Ohio Corporation not for profit, by the REVEREND MSGR PAUL METZGER does hereby certify that the attached plat is a correct representation of BEL CAPRE, Section 6, the same being situated in the State of Ohio, County of Belmont, Township of Pultney and being part of Section 6, Township 5, Range 3 and being Acres of land out of the 174.975 acres conveyed to Belleaire Housing Foundation Inc., an Ohio corporation not for profit, in a deed of record in Deed Book 444, Pages 102 thru 105, filed in the Recorder's office, Belmont County, Ohio.

The undersigned BELLAIRE HOUSING FOUNDATION INC. an Ohio Corporation not for profit, by the REVEREND MSGR PAUL METZGER owner of the land platted herein, duly authorized in the premises does hereby certify that the plat correctly represents its BEL CAPRE

Easements are reserved where shown on the plat, for the construction, operation, and maintenance of all public and private utilities, above and below the surface of the ground, and where necessary are for the construction, operation, and maintenance of service connections to all adjacent lots and lands, and for storm water drainage.

In Witness Whereof the Rev Msgr Paul Metzger for the BELLAIRE HOUSING FOUNDATION INC., an Ohio corporation, not for profit, has hereunto set his hand this 22nd day of Nov., 1978.

STATE OF OHIO
 COUNTY OF BELMONT }
 Be it remembered that on this 22nd day of Nov., 1978, before a notary public in and for said county and state personally came Rev Msgr Paul Metzger of the Belleaire Housing Foundation Inc who is President of the Belleaire Housing Foundation Inc and who

acknowledged the signing of the foregoing instrument to be his free act and deed and the free act and deed of the BELLAIRE HOUSING FOUNDATION INC. In testimony whereof, I have set my hand and affixed my seal on the day and date above written.

The above plat is a subdivision of 18.361 acres out of the 174.975 acres conveyed to the Belleaire Housing Foundation Inc. by deed as recorded in Deed Book 544 Page 102, 103, 104, 105 in the deed records of Belmont County, Ohio conveyed by CODEVCO INC. Acreage contained in dedicated Roads is 0.897 Acreage contained in lots 8 thru 20 incl 3.313 Acreage Total: 4.210

Surveyed & Platted by
ROSHON & ASSOCIATES
 Consulting Engineers & Surveyors
 I hereby certify that this map is a true and correct survey made by me Jan 1975; That all monuments are set as shown
 William B. Roshon 11-21-78
 Registered Surveyor 3886

Approved for Record this 22nd day of Nov., 1978 by Paul F. Bennett, P.E. Belmont County Engineer
 Approved for Record subject to the rules and regulations governing the platting of subdivisions of land this 22nd day of Nov., 1978
 BELMONT COUNTY COMMISSIONERS
 Transferred this 22nd day of Nov., 1978 by Belmont County Auditor Fee \$ 3.50 PAID
 No 144811 Auditor H. O. HALL By P. Castiglione P.A.
 Received for Record this 22nd day of Nov., 1978 at 11 o'clock A.M.
 Recorded this 1st day of Dec., 1978

In Belmont County Record of Plats Cabinet D Slide 247
 # 25.00 FEE PAID
 Stanley Simonis Belmont County Recorder

Note: For Protective Covenants See Volume 593, Page 265, Deeds