

MAP OF TERRITORY TO BE ANNEXED TO THE CITY OF MARTINS FERRY, OHIO. 1978

CLERK OF COUNCIL

I, Betty Lou Madala, CLERK OF COUNCIL OF THE CITY OF MARTINS FERRY DO HEREBY CERTIFY THAT THE FOREGOING IS A TRUE REFERENCE OF PROCEEDINGS FOR THE ANNEXATION OF THE TERRITORY DESCRIBED.
DATE Oct. 5, 1978
Betty Lou Madala
CLERK OF COUNCIL

CERTIFICATE OF SURVEYOR

I HEREBY CERTIFY THAT THIS PLAT WAS PREPARED BY ME AND THAT THE SAME IS CORRECT TO THE BEST OF MY KNOWLEDGE.

WM. SHRIVER NO. 4800

BELMONT COUNTY ENGINEER

APPROVED FOR RECORD 19th DATE October, 1978

Paul J. Bennett
BELMONT COUNTY ENGINEER

NOTE:

○ — DENOTES NEW CORR CORNER

ACREAGE

SECTION 13 — 0.222 AC.
SECTION 19 — 3.890 AC.
TOT. ROADS — 0.666 AC.
GLENHURST LOTS — 1.466 AC.
OUT-LOTS — 1.980 AC.
TOT. ACREAGE — 4.112 AC.

PLANNING COMMISSION

APPROVED _____, 1978

CHAIRMAN

CITY OF MARTINS FERRY

ACCEPTED OCTOBER 5, 1978

MAYOR

Betty Lou Madala
CLERK OF COUNCIL

BELMONT COUNTY AUDITOR

TRANSFERRED BY BELMONT COUNTY AUDITOR DATE 19th Oct., 1978
FEE \$ 3.50 PAID

H. O. Hall
BELMONT COUNTY AUDITOR
BY: P. Pastore

BELMONT COUNTY RECORDER

NO. 144567
RECEIVED FOR RECORD Nov. 8, 1978 AT 10 O'CLOCK A.M.
RECORDED Nov. 21, 1978 FEE \$ 25.00 PAID
BELMONT COUNTY RECORDS OF PLATS. CABINET D SLIDE 242

Shirley Simmons
COUNTY RECORDER

STATEMENT

THIS PLAT RECORDED IN ACCORDANCE WITH SECTION 709.02 OF THE OHIO REVISED CODE.

COUNTY COMMISSIONERS

JOURNAL ENTRY

PETITION RECEIVED AND FILED 10/11/78, 1978
HEARING SET FOR 10/12/78, 1978 AT 10:00 A.M.

COUNTY COMMISSIONERS

HEARING HAD AND EXTENTION GRANTED June 21, 1978 AT 10:00 M.

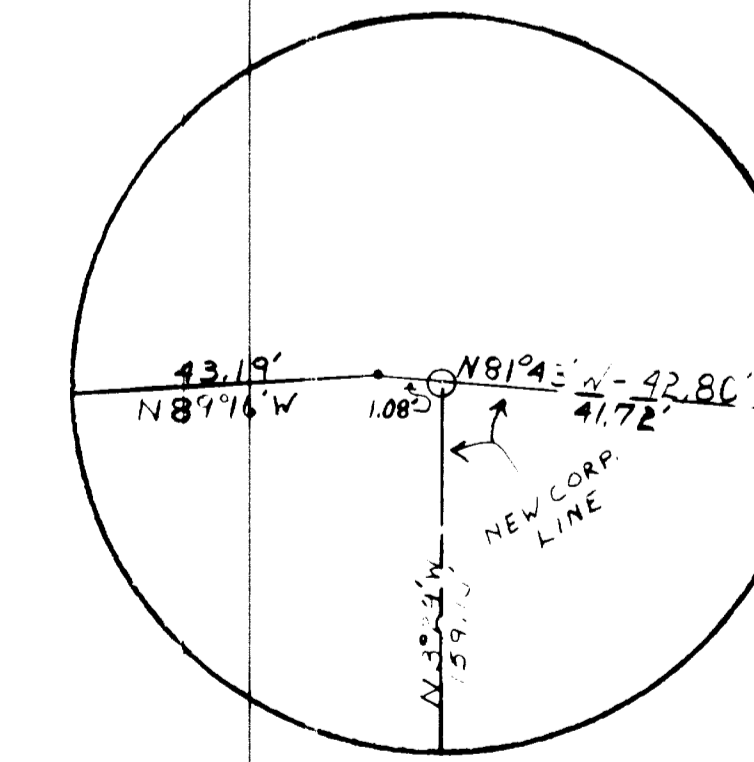
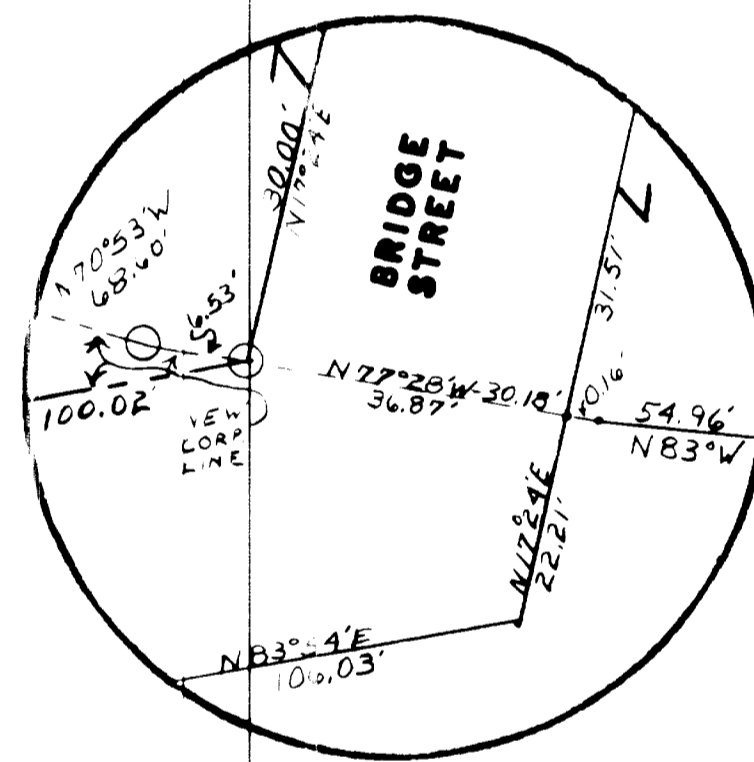
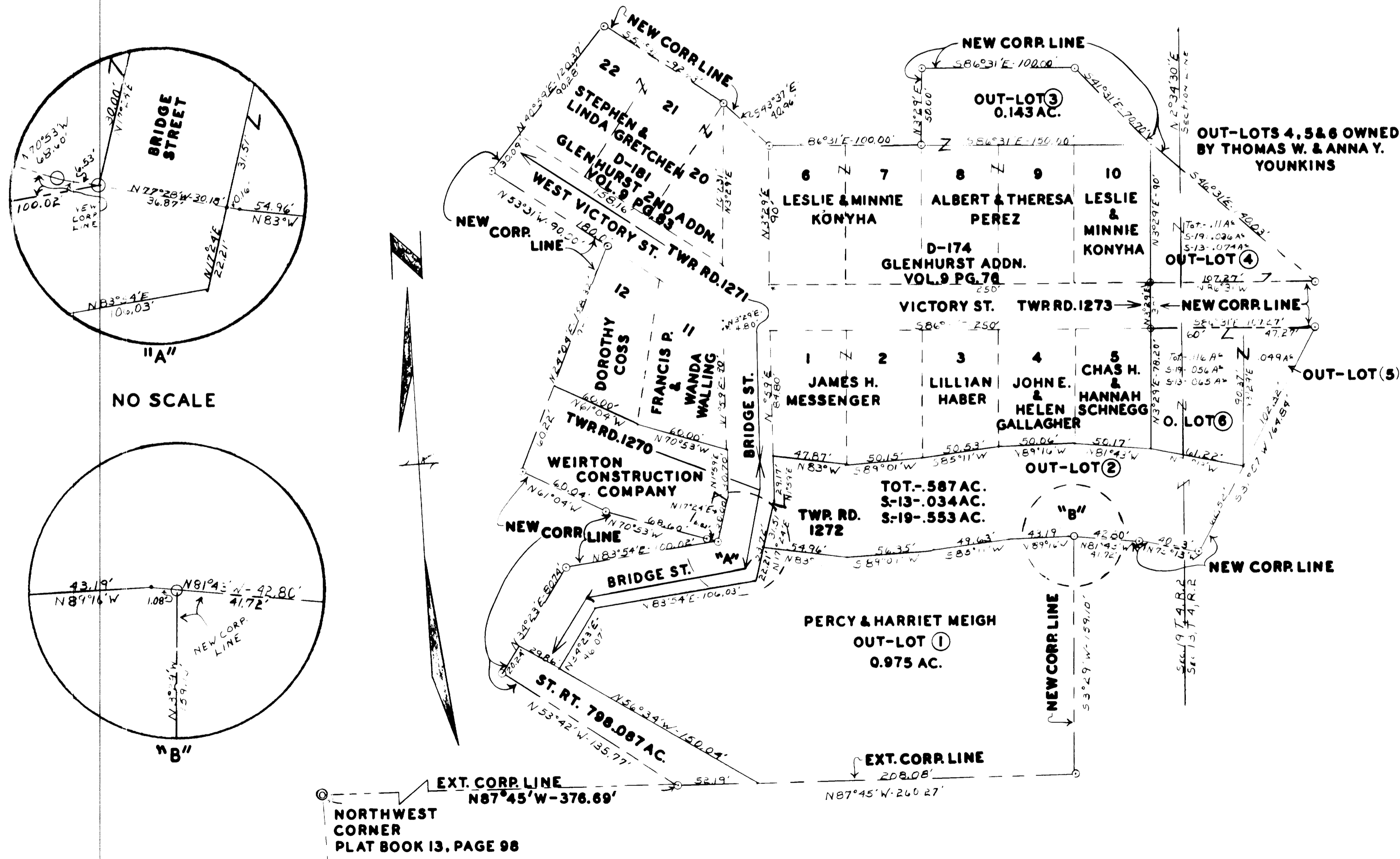
COUNTY COMMISSIONERS

JOURNAL ENTRY RECORDED VOLUME 50 PAGE 193

William Kappelle
CLERK OF CO. COMMISSIONERS

ORDINANCE NO. 7123

THE ABOVE ORDINANCE IS RECORDED IN VOL. 581 PAGE 608 OF THE BELMONT COUNTY DEED RECORDS.



NORTHWEST CORNER
PLAT BOOK 13, PAGE 98

SCALE 1" = 50'