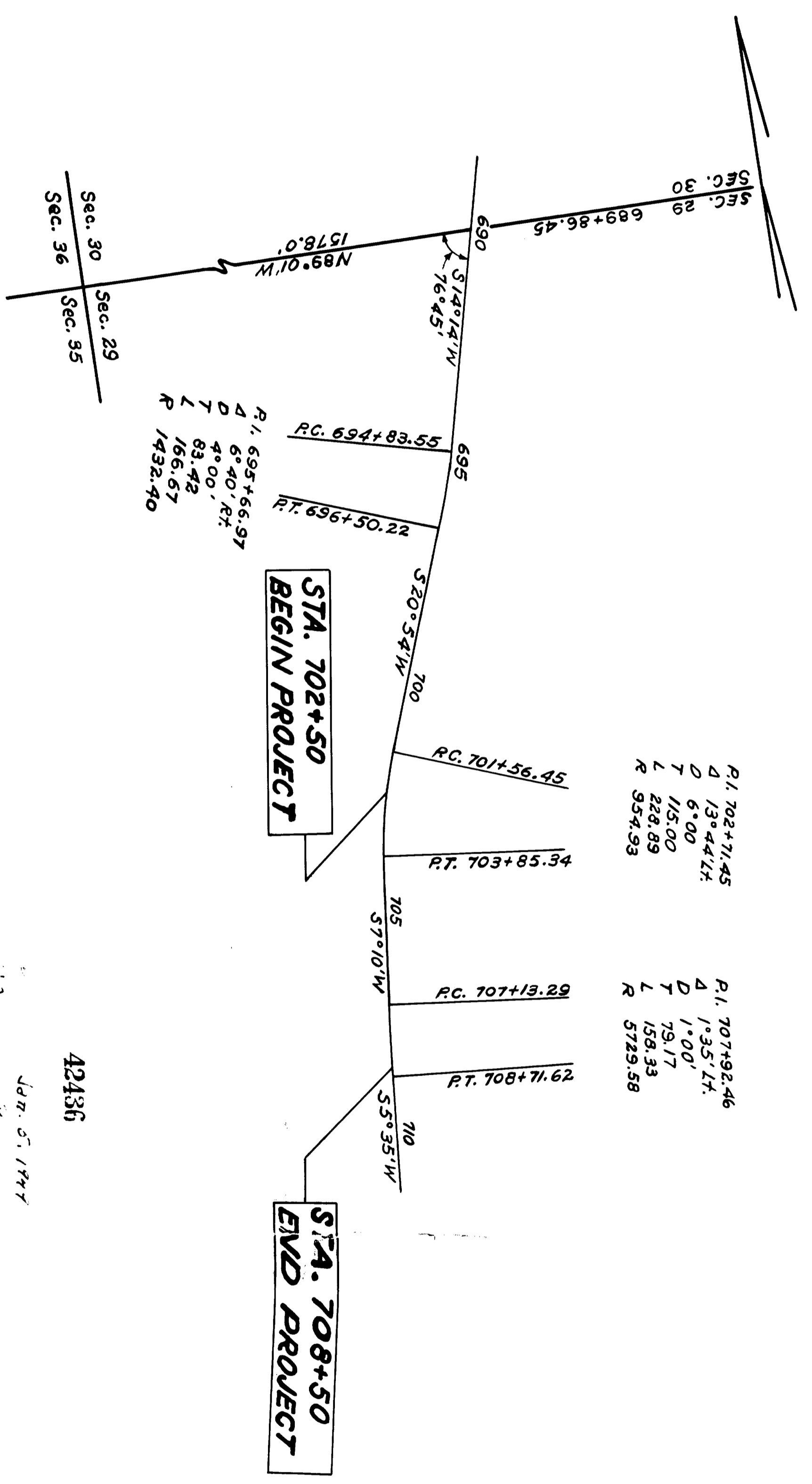


LOCATION PLAN BEL-331-13.27 1949

SCALE 1"=200'



BELMONT COUNTY
RICHLAND TOWNSHIP
SEC. 29 T-7N R-5W

Sec. 30
Sec. 29
Sec. 36
Sec. 35

P.I.	702+71.45
D	13°44.27'
T	6.00'
L	115.00'
R	228.89'
R	954.93'

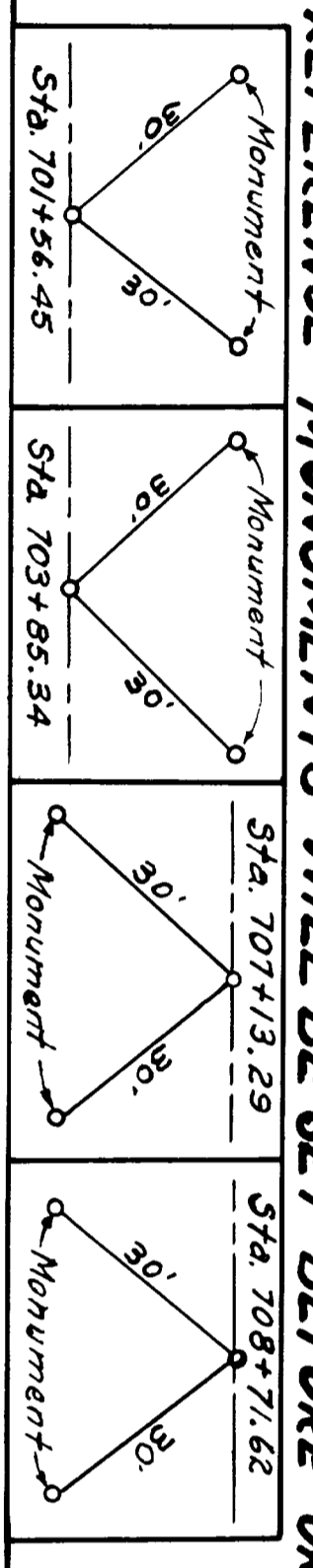
P.I.	707+92.46
D	1°35.27'
T	1.00'
L	79.17'
R	158.33'
R	5729.58'

P.I.	695+66.97
D	6°40' RT
T	83.42'
L	166.67'
R	1432.40'

42436
 Jan. 5, 1949
 Plans
 J. W. Rudy
 \$7.35 PAID

Jan. 5, 1949
 Transfer Not Necessary
 W. T. McClellan
 G.T.M.E. 1099

CENTER LINE REFERENCE MONUMENTS WILL BE SET BEFORE OR AFTER CONSTRUCTION



VOLUME 9 PAGE 136

I hereby certify that this plat is correct to the best of my knowledge and belief.

Signed W. T. McClellan Division Engineer
 Date 1-4-49