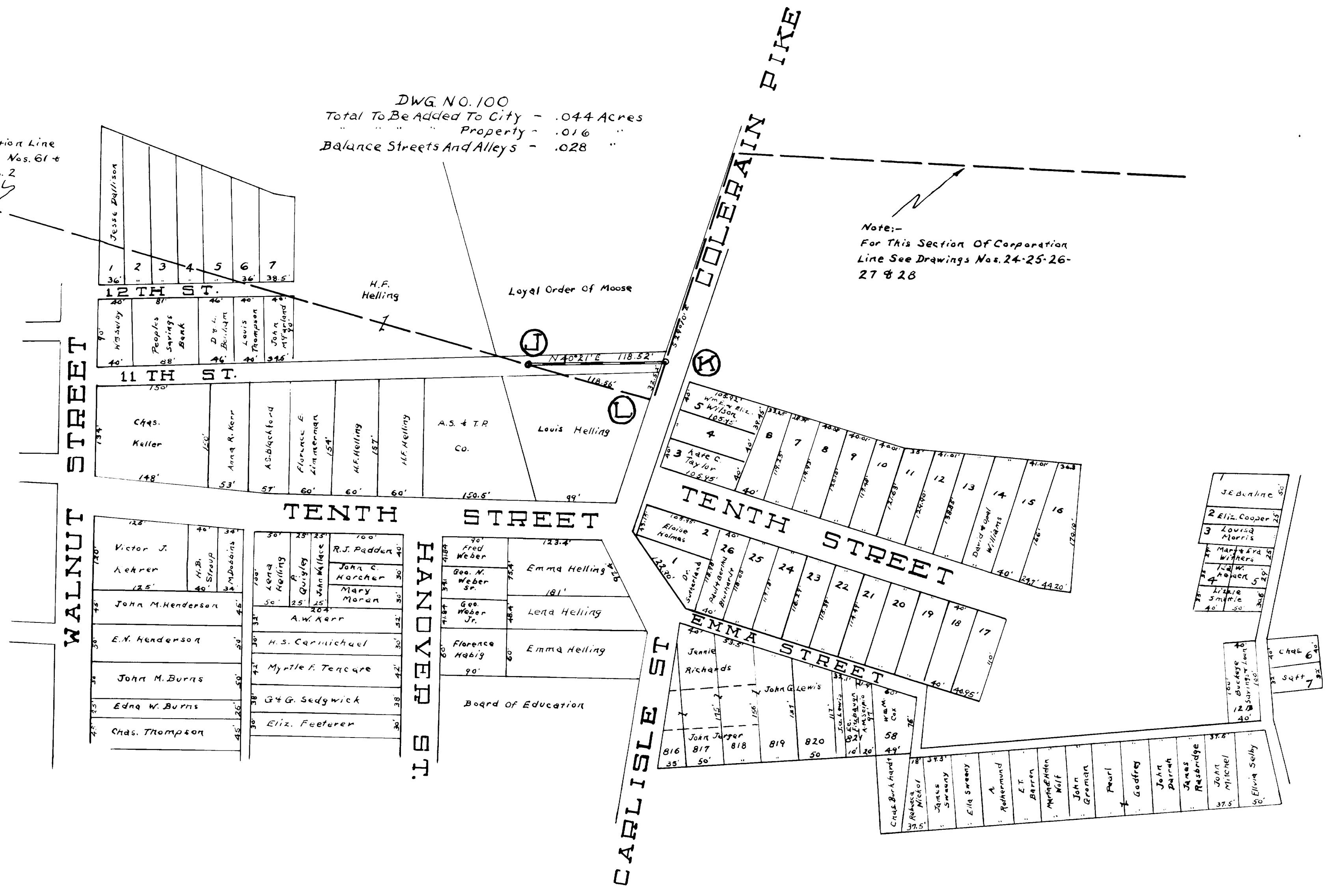


**CORPORATION LINE
EXTENSION**
DATE-JUNE-1940 SCALE-1"=100'
ENG.-W.S.SHRIVER

Note:
For Corporation Line
See Drawings Nos. 61 +
62 Book No. 2

DWG. NO. 100
Total To Be Added To City - .044 Acres
" " " " Property - .016
Balance Streets And Alleys - .028

Note:-
For This Section Of Corporation
Line See Drawings Nos. 24-25-26-
27 & 28



.10 4