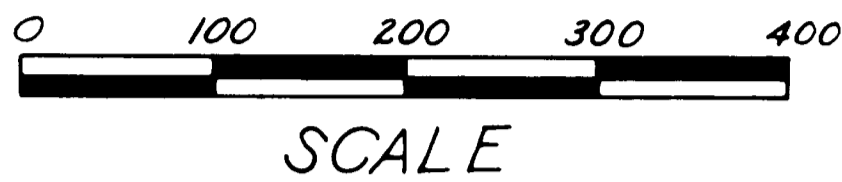


CENTER LINE SURVEY FLAT I-70 SEC. 26.92

BELMONT COUNTY OHIO
PEASE TOWNSHIP SEC. 28-T3N-R2W
VILLAGE OF BRIDGEPORT

66422

This improvement has been declared a Limited Access Highway from Sta. 355+75 to the State line, by action of The Director of Highways and Recorded in Volume 44, Page 7, of The Director's Journal Pursuant To Law.



Received for Record JUNE 15, 1965
Recorded JUNE 22 at 9:13 A.M., 1965
Recorded Book 12, Page 109 of the Belmont County Records.

Nick Munas
County Recorder
By *WR Calovini*
DEP.

Approved for record this 14th day of June, 1965.

R.J. Boccabella
R.J. Boccabella
Belmont County Engineer

VILLAGE OF BRIDGEPORT
(OLD TOWN OF CANTON)
VOL. A, PAGE 507
LOTS 600-616

Monument Set
S.T. Sta. 348+20.36

Monument Set
P.O.T. Sta. 355+00

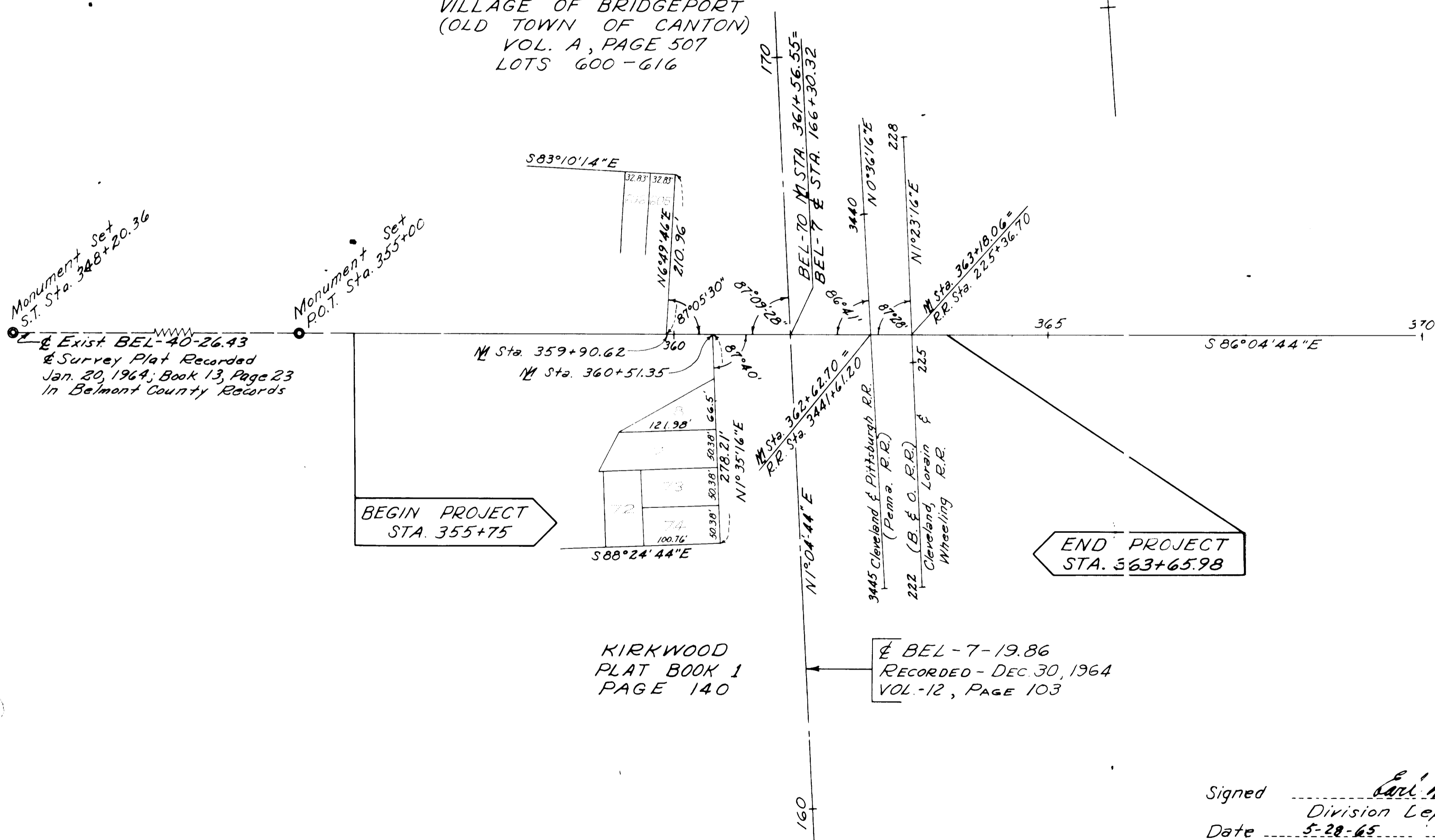
Exist BEL-40-26.43
& Survey Plat Recorded
Jan. 20, 1964; Book 13, Page 23
in Belmont County Records

BEGIN PROJECT
STA. 355+75

END PROJECT
STA. 363+65.98

KIRKWOOD
PLAT BOOK 1
PAGE 140

BEL-7-19.86
RECORDED - DEC 30, 1964
VOL -12, PAGE 103



Signed *Earl H. Nelson*
Division Deputy Director
Date 5-28-65

I hereby certify that this plat is a true delineation of a survey made for the Ohio Department of Highways in 1964 by the State of Ohio.

Earl H. Nelson
Registered Surveyor
Date: 6-1-65

