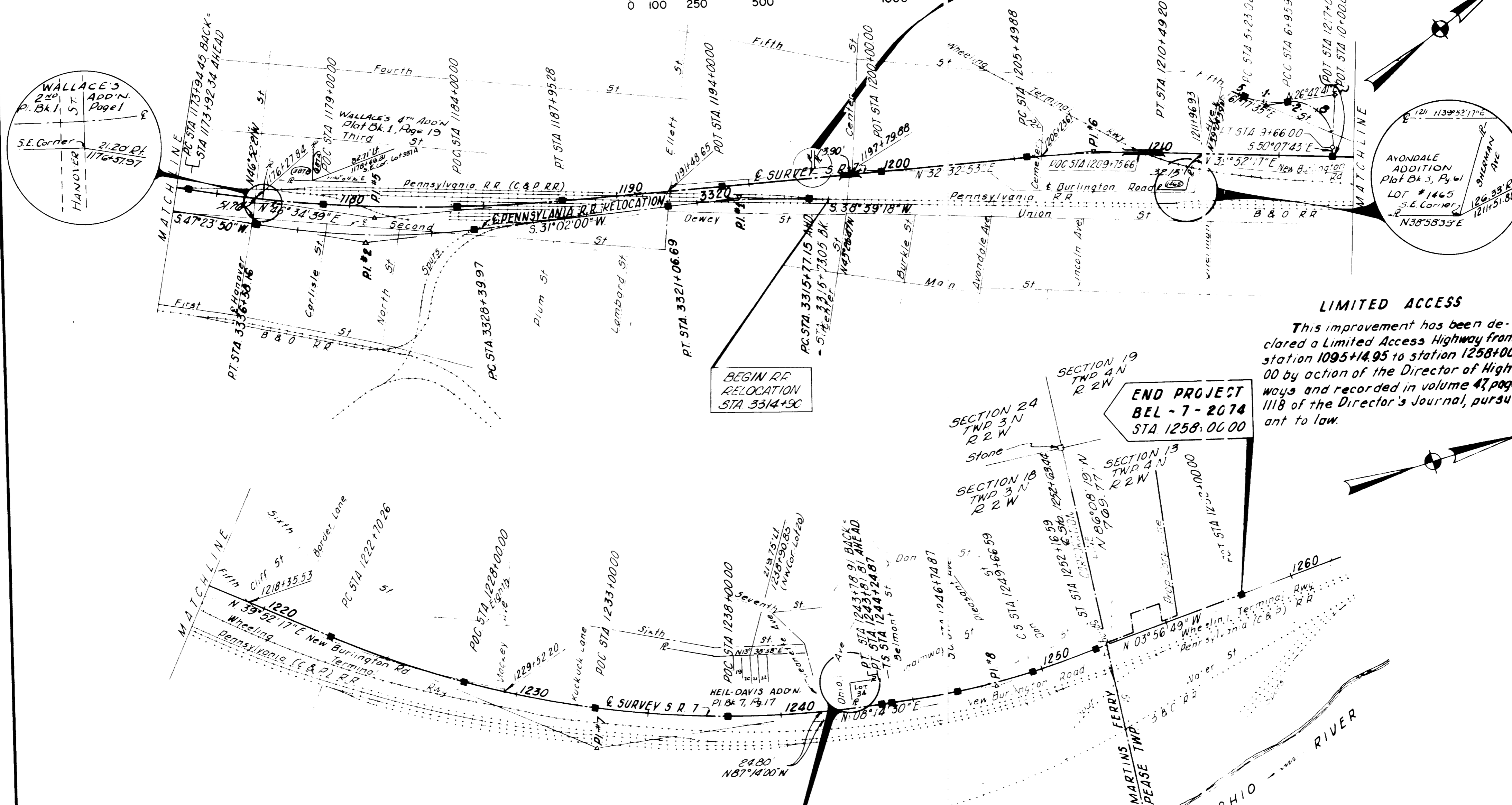
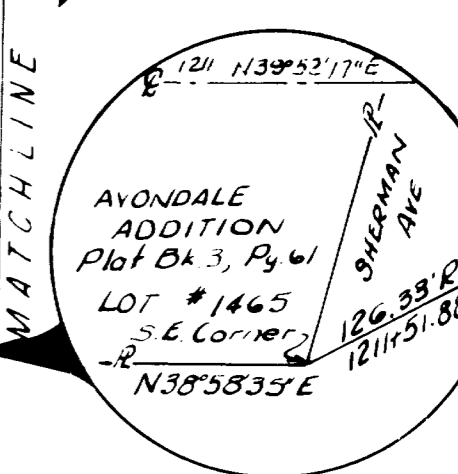
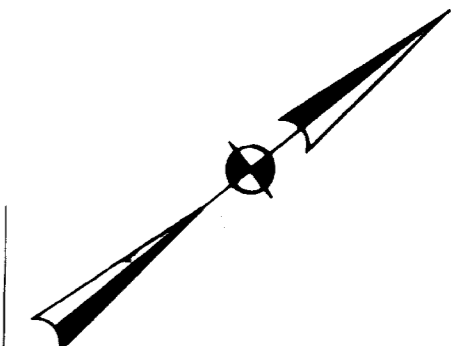
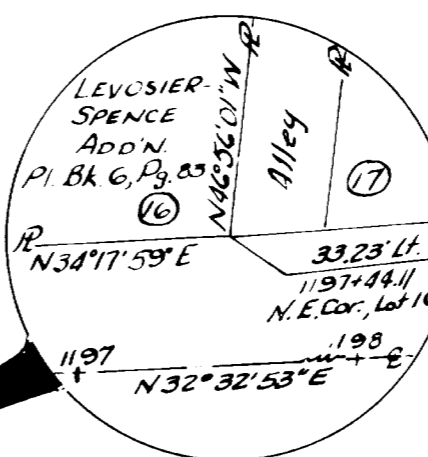
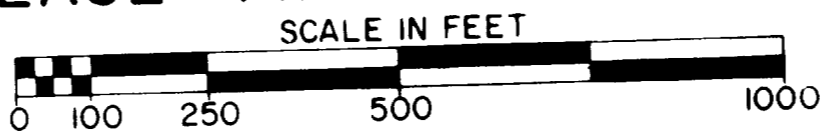


RECEIVED JAN. 4 1965  
 RECORDED 8:40 AM. JAN. 7, 1965  
 BOOK 12, PAGE 106  
 Nick Munns  
 COUNTY RECORDER

# CENTERLINE SURVEY PLAT

STATE ROUTE 7 - SEC. 20.74  
 BELMONT COUNTY, OHIO  
 CITY OF MARTINS FERRY  
 & PEASE TWP. T. 4 R. 2 SEC. 13



**LIMITED ACCESS**  
 This improvement has been declared a Limited Access Highway from station 1095+4.95 to station 1258+00.00 by action of the Director of Highways and recorded in volume 47 page 1118 of the Director's Journal, pursuant to law.

**END PROJECT**  
 BEL - 7 - 2074  
 STA 1258.06 00

RELOCATED		S. R. 7		CURVE DATA	
PI. #5 STA 1180+97.34	PI. #6 STA 1207+99.88	PI. #7 STA 1233+52.20	PI. #8 STA 1248+21.85	Ls = 250.00'	Δ = 14° 01' 46" LT
Δ = 14° 01' 46" LT	Δ = 07° 19' 24" RT	Δ = 31° 37' 47" LT	Δ = 12° 11' 19" LT	Δs = 02° 48' 45" LT	D = 01° 00' 00"
D = 01° 00' 00"	D = 01° 28' 00"	D = 01° 30' 00"	Dc = 06° 33' 49" LT	P = 1.02'	R = 5729.58'
R = 5729.58'	R = 3906.53'	R = 3819.71'	Dc = 02° 15' 00"	K = 124.99'	L = 1402.94'
L = 1402.94'	L = 499.32'	L = 2108.65'	Rc = 2546.48'	LT = 166.68'	T = 705.00'
T = 705.00'	T = 250.00'	T = 1081.94'	Lc = 291.72'	ST = 83.35'	E = 43.21'
E = 43.21'	E = 7.99'	E = 150.27'	Tc = 146.02'	Ts = 396.98'	
			Ec = 4.18'	Es = 15.50'	

FIFTH STREET		CURVE DATA	
CURVE - 1	PI STA 6+12.20	CURVE - 2	PI STA 8+85.05
Δ = 34° 34' 54" LT	Δ = 20° 00' 00"	Δ = 103° 09' 36" RT	Δ = 38° 11' 50"
D = 20° 00' 00"	R = 286.48'	D = 38° 11' 50"	R = 140.00'
R = 286.48'	L = 172.91'	L = 270.07'	L = 270.07'
L = 172.91'	T = 89.18'	T = 169.12'	T = 169.12'
T = 89.18'	E = 13.56'	E = 91.33'	E = 91.33'

PENNSYLVANIA RAILROAD CURVE DATA			
PI. #2 STA 3332+51.89	PI. #1 STA 3318+42.35		
Δ = 16° 21' 50" RT	Δ = 07° 56' 35" LT		
D = 02° 00' 00"	D = 01° 30' 00"		
R = 2864.93'	R = 3819.37'		
L = 813.19'	L = 529.54'		
T = 411.92'	T = 265.60'		
E = 29.46'	E = 9.9'		

**LEGEND**  
 ■ denotes Centerline Monument Assemblies

**NOTE:** Centerline Monument Assemblies will be set before or after construction

I hereby certify that this plat is a true delineation of a survey made for the Ohio Department of Highways in 1962 by

Theodore L. Wallace  
 Theodore L. Wallace,  
 6/13/64 Registered Surveyor 6650

Earl W. Nelson  
 Earl W. Nelson,  
 12-19-64 Division Deputy Director

