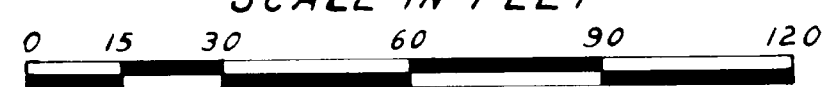


GRAPHITE BRONZE SUBDIVISION

COLERAIN TWP. SEC. 10, T.6, R.3
BELMONT COUNTY, OHIO

SCALE IN FEET



CERTIFICATE OF SURVEYOR:

The within plat is a subdivision of a part of a 18.0559 acres conveyed to CLEVITE CORPORATION by deed as recorded in Deed Book 472, Page 703 in the deed records of Belmont County, Ohio.

The above mentioned tract of land was conveyed by THE LOUIS BERKMAN REALTY CO.

Acreage contained in dedication to U.S. 40	0.124 Acre
Acreage contained in dedicated streets is	0.376 Acre
Acreage contained in Lot 1	0.817 Acre
Acreage contained in Out-Lot "A"	0.275 Acre
Total acreage is	1.592 Acres

I, hereby, certify that this map is a true and correct survey made by me on Dec. 7, 1964, that all monuments are set as shown.

C. J. Boccabella
Registered Surveyor No. S-3402

OWNERS CONSENT AND DEDICATION:

We, the undersigned, being all of the owners of the lands herein platted, do hereby voluntarily consent to the execution and recording of the said plat and do dedicate the street, as shown hereon to the public use forever.

WITNESS:

H. M. Leighton
M. A. McTally

CLEVITE CORPORATION
By: *H. P. Cameron* - Vice President
By: *Wanda King Jr.* - Assistant Secretary

STATE OF OHIO ss.
COUNTY OF CUYAHOGA

Before me, a Notary Public, in and for said County, personally appeared *H. P. Cameron*, Vice-President and *Wanda King Jr.*, Assistant Secretary of CLEVITE CORPORATION, the Corporation which executed this Plat and who acknowledge that the Seal affixed to this Plat is the Corporate Seal of said Corporation; that they did sign and seal said Plat as such Vice President and Assistant Secretary in behalf of said Corporation and by authority of its Board of Directors; and that said Recording and Dedication is their free act and deed individually and as such Officers and the free and corporate act and deed of said CLEVITE CORPORATION.

IN TESTIMONY WHEREOF, I have hereunto subscribed my name and affixed my official seal at Cleveland, Ohio, this 11th day of December, 1964.

Mary Wittich
Notary Public

COUNTY ENGINEER:

Approved for Record
Date Dec. 14, 1964
C. J. Boccabella
Belmont County Engineer

COUNTY COMMISSIONERS:

Approved for Record, subject to the rules and regulations governing the platting of subdivisions of land.

BELMONT COUNTY COMMISSIONERS
Date 12/14/1964
Louis Sabulsky
Justin G. Tarkenton
William H. Gossely

COUNTY AUDITOR:

Transferred by Belmont County Auditor.
Date Dec. 22, 1964
W. C. McCort
Auditor C.C.

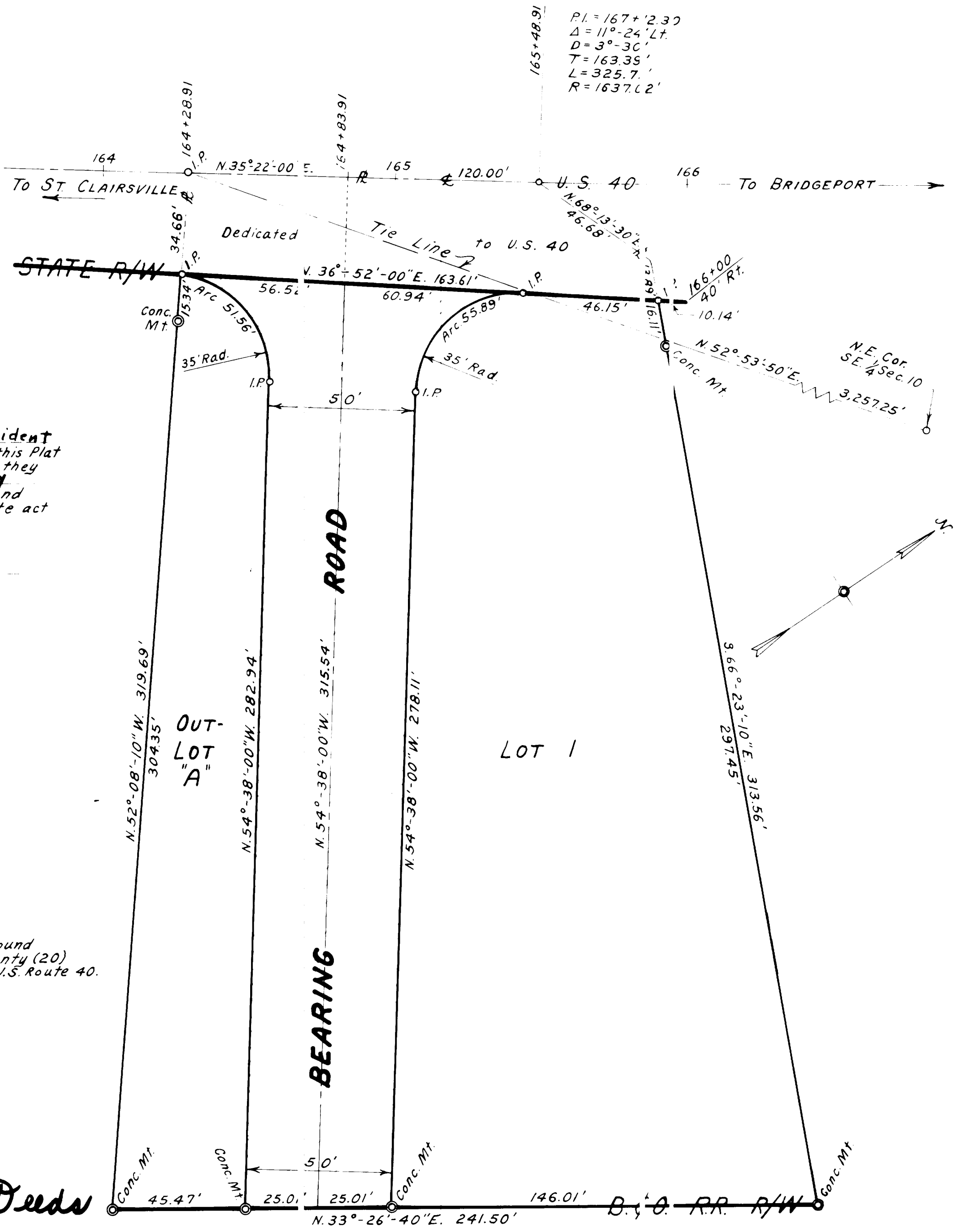
COUNTY RECORDER:

No. 63730
Received for Record DEC. 22, 1964, at 12:07 o'clock P. M.
Recorded JAN. 4, 1965. Fee \$14.75 ps.

In Belmont County Record of Plats.

Volume 12, Page 104.
Nick Munas Recorder
By *WR Calvini*, Deputy

NOTE:
No structure above ground permitted closer than twenty (20) feet to Bearing Road or U.S. Route 40.



PI = 167 + 2.30
Δ = 11° - 24' Lt.
D = 3° - 30'
T = 163.35'
L = 325.7'
R = 1637.62'

See Volume 519 page 550 - Deeds