

### CERTIFICATE OF SURVEYOR

The within Plat is a subdivision of an 58 acre Tract Conveyed to John P. Montag by deed recorded in Deed Book 396 - Page 269 of the Deed Records of Belmont County, Ohio

Area in lot 0.506 Acres  
Area in Road 0.127 Acres  
Total 0.633 Acres

I hereby certify that this map represents a true and correct survey made by me on July 9-1964 and that the location, size and material of monuments are as shown.

Ray L. McFarland  
Registered Surveyor #3900

### STATEMENT

We the undersigned, being the owners of the real estate represented by this plat do hereby consent to the execution and recording of said plat, and do hereby dedicate the road for public use.

John P. Montag  
Klara Montag  
Witnesses Owners

### STATE OF OHIO BELMONT COUNTY SS:

Be it remembered that on this 5th day of August 1964, before me the undersigned a notary Public in and for said County and state personally came John P. Montag and Klara Montag, husband & wife, who acknowledged that they did sign the foregoing plat, and the same is their free act and deed. In testimony whereof, I have set my hand and notary seal on the day and date above written

James J. Neulin  
Notary Public in and for Belmont County, Ohio

### COUNTY ENGINEER

Approved for Record August 5, 1964  
by James J. Neulin Admin. Asst.  
R. J. Baccabelli  
Belmont County Engineer

### COUNTY COMMISSIONERS

Approved for record, subject to the rules and regulations governing the platting of subdivisions of land.

Louis J. ...  
Frank ...

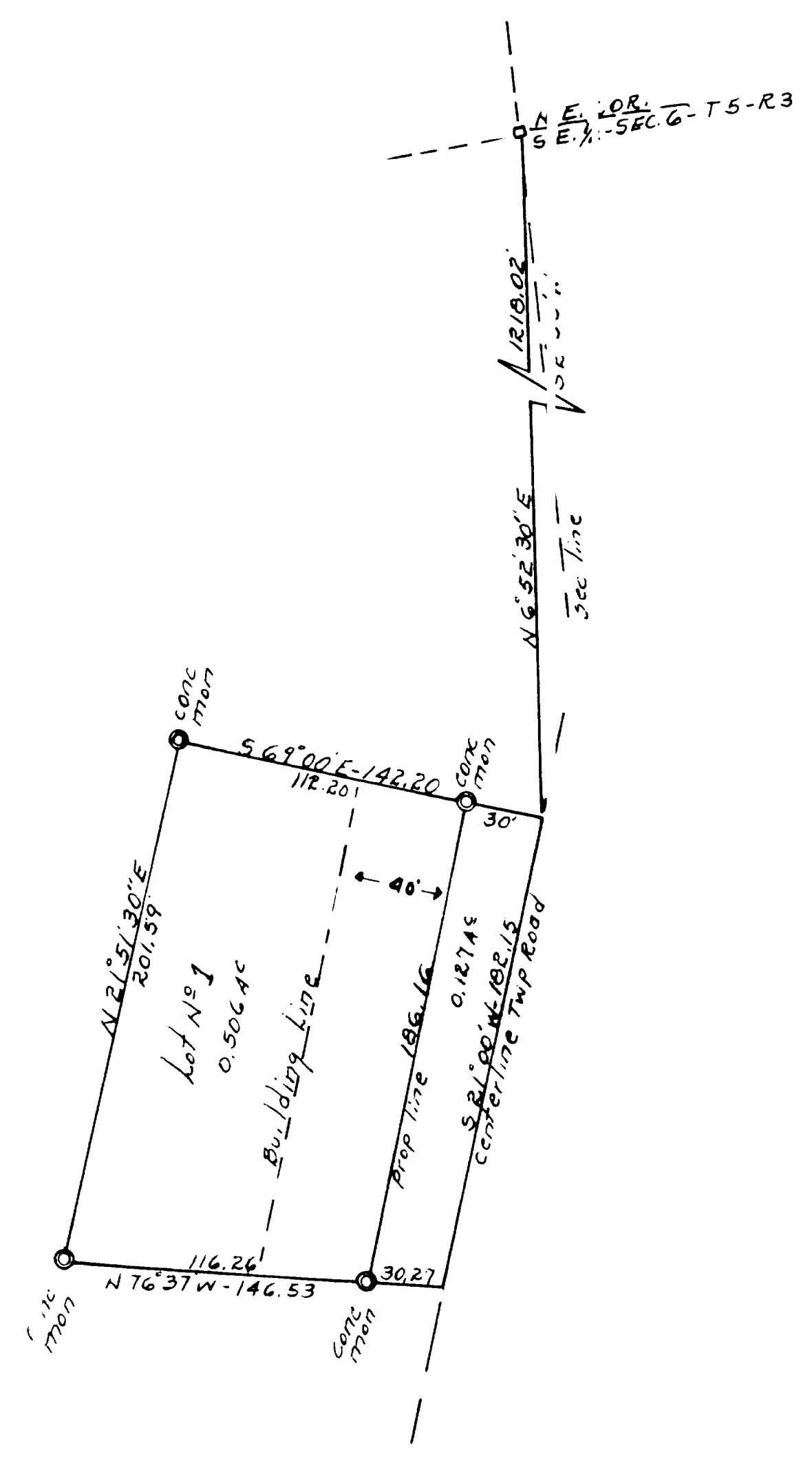
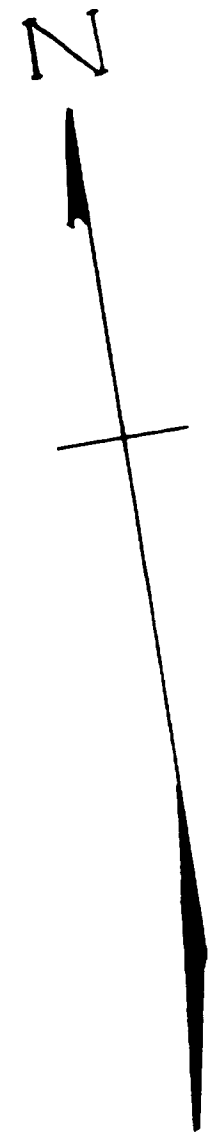
Date August 5, 1964

### COUNTY AUDITOR

Transferred by Belmont County Auditor  
Date Aug 7 1964 W.C. McCort Fee .35 PAID  
D.O.

### COUNTY RECORDER

NR 61577  
Received for Record AUG 7 1964  
at 8:31 o'clock A.M.  
Recorded AUG 19 1964  
in Belmont County Record of Plats  
Volume 12 Page 94  
\$ 14.75 PAID Nick Murnas Recorder  
By H.R. Calovine Deputy



JOHN MONTAG SUBDIVISION NO. 1  
PULTNEY TWP.- BEL. CO.- OHIO  
SECTION 6 - TOWNSHIP 5 - RGE. 3  
SCALE 1"=50 JULY 1964  
Shriver & McFarland - Reg. Surveyors.