

DEDICATION  
WE, THE UNDERSIGNED, BEING ALL OF THE OWNERS OF THE LANDS  
HEREIN PLATTED, DO HEREBY VOLUNTARILY CONSENT TO THE  
EXECUTION AND RECORDING OF THE SAID PLAT AND DO DEDICATE  
THE STREETS, AS SHOWN HEREON TO THE VILLAGE OF ST. CLAIRSVILLE  
FOR PUBLIC USE FOREVER.

Cornie P. Butcher Thomas F. Joseph  
Edna M. Joseph

STATE OF OHIO  
BELMONT COUNTY SS

BE IT REMEMBERED THAT ON THIS 7<sup>th</sup> DAY OF FEBRUARY  
1964, BEFORE ME THE UNDERSIGNED, A NOTARY PUBLIC IN AND  
FOR SAID COUNTY AND STATE, PERSONALLY CAME Thomas F. Joseph, Edna M. Joseph  
& Cornie P. Butcher, WHO ACKNOWLEDGED THAT THEY DID SIGN  
THE FOREGOING PLAT AND THAT THE SAME IS THEIR FREE  
ACT AND DEED.  
IN TESTIMONY WHEREOF I HAVE SET MY HAND AND NOTARY  
SEAL ON THE DAY AND DATE ABOVE WRITTEN.  
William R. Cochran  
NOTARY PUBLIC IN AND FOR BELMONT COUNTY OHIO

CERTIFICATE OF ENGINEER  
I, HEREBY, CERTIFY THAT THIS MAP IS A TRUE AND CORRECT  
SURVEY MADE BY ME, ON JAN. 1964 THAT ALL MONUMENTS  
ARE SET AS SHOWN. William R. Cochran  
E-1649. S-3521

COUNTY COMMISSIONERS  
APPROVED FOR RECORD SUBJECT TO THE RULES AND  
REGULATIONS GOVERNING THE PLATTING OF SUBDIVISIONS  
OF LAND  
BELMONT COUNTY COMMISSIONERS  
DATE 7-9-1964

COUNTY AUDITOR  
TRANSFERRED BY BELMONT COUNTY AUDITOR  
DATE 7-17-1964 Don Olivetti

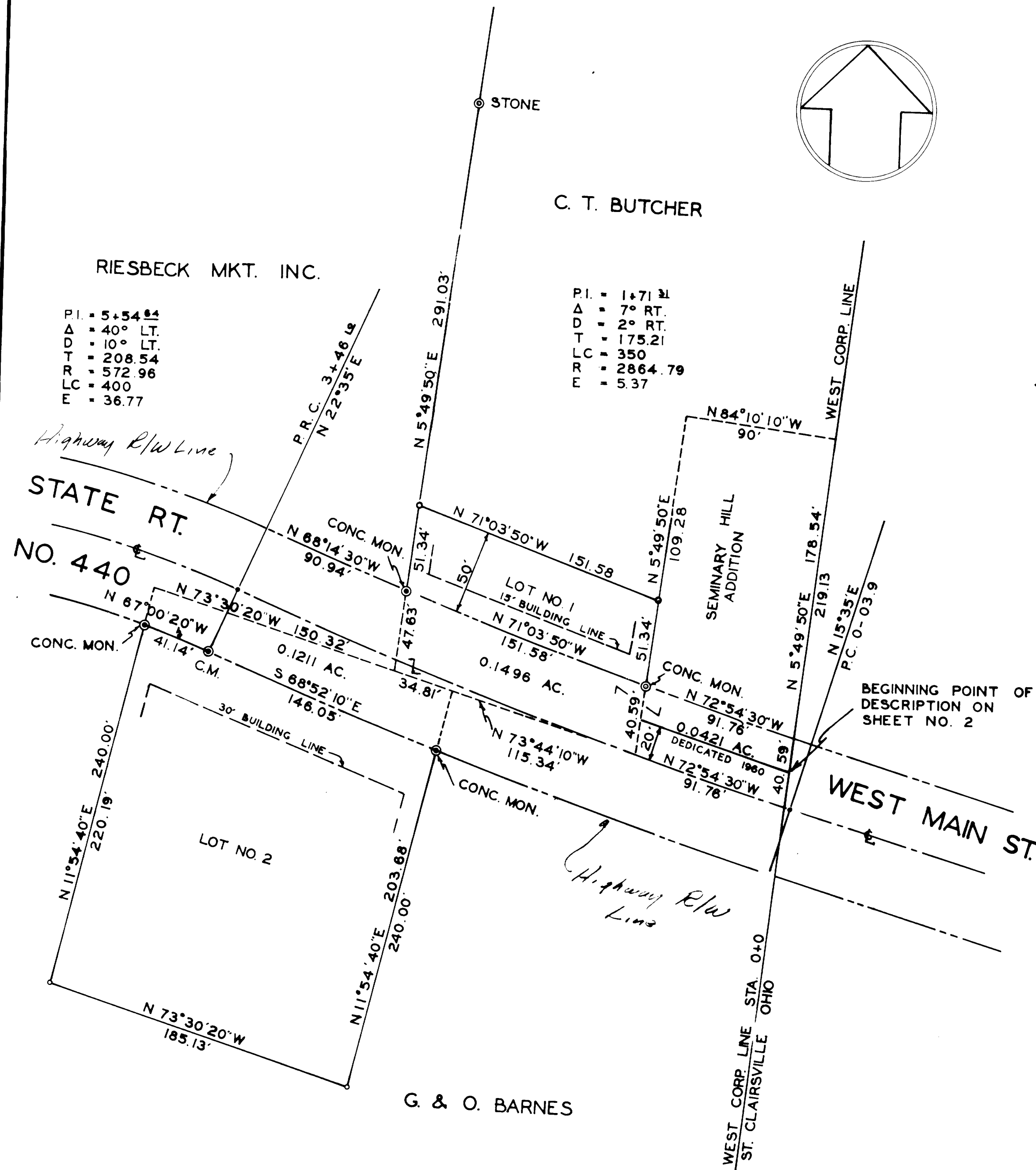
COUNTY RECORDER  
NO. 61162  
RECEIVED FOR RECORD JULY 20 1964  
AT 8:20 O'CLOCK A M  
RECORDED JULY 29 1964 \$ 28.50 PAID  
IN BELMONT COUNTY RECORD OF PLATS  
VOLUME 12 PAGE 92  
Nick Munas RECORDER By H.R. Galovini Dep.

COUNTY ENGINEER  
APPROVED FOR RECORD [Signature]  
DATE July 17, 1964 BELMONT COUNTY ENGINEER

APPROVED BY THE PLANNING COMMISSION  
THIS 9<sup>th</sup> DAY OF July 1964 [Signature] PRESIDENT

ACCEPTED BY THE VILLAGE OF ST. CLAIRSVILLE  
THIS 6<sup>th</sup> DAY OF July 1964  
MAYOR [Signature] CLERK [Signature]  
ORDINANCE NO. [Blank]

LEGEND  
CONC. MONUMENT ●  
IRON PINS ○  
ACREAGE CONTAINED IN DEDICATED STREETS 0.312 AC.  
ACREAGE CONTAINED IN LOTS 1.244 AC.



# SEMINARY HILL 2ND ADDITION

TO  
ST. CLAIRSVILLE OHIO  
SCALE 1"=50' JAN. 17, 1964

W. R. HERBERT CIVIL ENGINEER & SURVEYOR

RIESBECK MKT. INC.  
P.I. = 5+54.84  
Δ = 40° LT.  
D = 10° LT.  
T = 208.54  
R = 572.96  
LC = 400  
E = 36.77

C. T. BUTCHER  
P.I. = 1+71.21  
Δ = 7° RT.  
D = 2° RT.  
T = 175.21  
R = 350  
LC = 2864.79  
E = 5.37